

ARG54093 anti-Calumenin antibody

Package: 100 µl
Store at: -20°C

Summary

Product Description	Mouse Monoclonal antibody recognizes CALU
Tested Reactivity	Hu, Ms
Tested Application	WB
Host	Mouse
Clonality	Monoclonal
Isotype	IgG1
Target Name	Calumenin
Species	Human
Immunogen	Purified recombinant human Calumenin protein fragments expressed in E.coli.
Conjugation	Un-conjugated
Alternate Names	Crocalbin; IEF SSP 9302; Calumenin

Application Instructions

Application table	Application	Dilution
	WB	1:1000
Application Note	* The dilutions indicate recommended starting dilutions and the optimal dilutions or concentrations should be determined by the scientist.	
Observed Size	37 kDa	

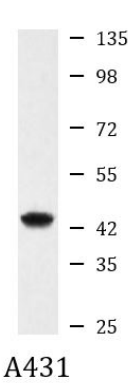
Properties

Form	Liquid
Purification	Affinity purified
Buffer	0.1M Tris-Glycine (pH 7.4), 150 mM NaCl, 0.2% Sodium azide and 50% Glycerol
Preservative	0.2% Sodium azide
Stabilizer	50% Glycerol
Concentration	0.5 mg/ml
Storage instruction	For continuous use, store undiluted antibody at 2-8°C for up to a week. For long-term storage, aliquot and store at -20°C. Storage in frost free freezers is not recommended. Avoid repeated freeze/thaw cycles. Suggest spin the vial prior to opening. The antibody solution should be gently mixed before use.
Note	For laboratory research only, not for drug, diagnostic or other use.

Bioinformation

Database links	GeneID: 12321 Mouse GeneID: 813 Human Swiss-port # O35887 Mouse Swiss-port # O43852 Human
Gene Symbol	CALU
Gene Full Name	calumenin
Background	Involved in regulation of vitamin K-dependent carboxylation of multiple N-terminal glutamate residues. Seems to inhibit gamma-carboxylase GGCX. Binds 7 calcium ions with a low affinity
Function	Involved in regulation of vitamin K-dependent carboxylation of multiple N-terminal glutamate residues. Seems to inhibit gamma-carboxylase GGCX. Binds 7 calcium ions with a low affinity (By similarity). [UniProt]
Research Area	Controls and Markers antibody; Signaling Transduction antibody
Calculated Mw	37 kDa
Cellular Localization	Endoplasmic reticulum lumen. Secreted. Melanosome. Sarcoplasmic reticulum lumen

Images



ARG54093 anti-Calumenin antibody WB image

Western blot: A431 cell lysate stained with ARG54093 anti-Calumenin antibody at 1:1000 dilution.