

## ARG54152 anti-BRAP antibody

Package: 100 µl  
Store at: -20°C

### Summary

Product Description	Mouse Monoclonal antibody recognizes BRAP
Tested Reactivity	Hu
Tested Application	WB
Host	Mouse
Clonality	Monoclonal
Isotype	IgG1
Target Name	BRAP
Species	Human
Immunogen	Purified recombinant human BRAP protein fragments expressed in E.coli.
Conjugation	Un-conjugated
Alternate Names	BRAP; BRCA1 Associated Protein; BRAP2; RNF52; IMP; Impedes Mitogenic Signal Propagation; RING-Type E3 Ubiquitin Transferase BRAP2; Renal Carcinoma Antigen NY-REN-63; Galectin-2-Binding Protein; BRCA1-Associated Protein; RING Finger Protein 52; EC 2.3.2.27

### Application Instructions

Application table	Application	Dilution
	WB	1:500 - 1:1000
Application Note	* The dilutions indicate recommended starting dilutions and the optimal dilutions or concentrations should be determined by the scientist.	
Observed Size	67 kDa	

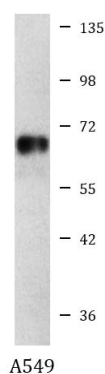
### Properties

Form	Liquid
Purification	Affinity purified
Buffer	PBS (pH 7.4), 0.02% Sodium azide and 50% Glycerol
Preservative	0.02% Sodium azide
Stabilizer	50% Glycerol
Concentration	1.8 mg/ml
Storage instruction	For continuous use, store undiluted antibody at 2-8°C for up to a week. For long-term storage, aliquot and store at -20°C. Storage in frost free freezers is not recommended. Avoid repeated freeze/thaw cycles. Suggest spin the vial prior to opening. The antibody solution should be gently mixed before use.
Note	For laboratory research only, not for drug, diagnostic or other use.

## Bioinformation

Database links	<a href="#">GeneID: 8315 Human</a> <a href="#">Swiss-port # Q7Z569 Human</a>
Gene Symbol	BRAP
Gene Full Name	BRCA1 associated protein
Background	The protein encoded by this gene was identified by its ability to bind to the nuclear localization signal of BRCA1 and other proteins. It is a cytoplasmic protein which may regulate nuclear targeting by retaining proteins with a nuclear localization signal in the cytoplasm. [provided by RefSeq, Jul 2008]
Function	Negatively regulates MAP kinase activation by limiting the formation of Raf/MEK complexes probably by inactivation of the KSR1 scaffold protein. Also acts as a Ras responsive E3 ubiquitin ligase that, on activation of Ras, is modified by auto-polyubiquitination resulting in the release of inhibition of Raf/MEK complex formation. May also act as a cytoplasmic retention protein with a role in regulating nuclear transport. [UniProt]
Research Area	Gene Regulation antibody; Signaling Transduction antibody
Calculated Mw	67 kDa
PTM	Phosphoprotein. [UniProt]
Cellular Localization	Cytoplasm. [UniProt]

## Images



ARG54152 anti-BRAP antibody WB image

Western blot: A549 cell lysate stained with ARG54152 anti-BRAP antibody at 1:500 dilution.