

## ARG54172 anti-ERCC1 antibody

Package: 100 µl, 50 µl  
Store at: -20°C

### Summary

Product Description	Mouse Monoclonal antibody recognizes ERCC1
Tested Reactivity	Hu
Tested Application	WB
Host	Mouse
Clonality	Monoclonal
Isotype	IgG2b
Target Name	ERCC1
Species	Human
Immunogen	Purified recombinant human ERCC1 protein fragments expressed in E.coli.
Conjugation	Un-conjugated
Alternate Names	DNA excision repair protein ERCC-1; RAD10; COFS4; UV20

### Application Instructions

Application table	Application	Dilution
	WB	1:1000
Application Note	* The dilutions indicate recommended starting dilutions and the optimal dilutions or concentrations should be determined by the scientist.	
Observed Size	39 kDa	

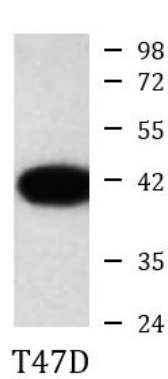
### Properties

Form	Liquid
Purification	Affinity purified
Buffer	PBS (pH 7.4), 0.02% Sodium azide, 0.1mg/ml BSA and 50% Glycerol
Preservative	0.02% Sodium azide
Stabilizer	0.1mg/ml BSA, 50% Glycerol
Concentration	18 mg/ml
Storage instruction	For continuous use, store undiluted antibody at 2-8°C for up to a week. For long-term storage, aliquot and store at -20°C. Storage in frost free freezers is not recommended. Avoid repeated freeze/thaw cycles. Suggest spin the vial prior to opening. The antibody solution should be gently mixed before use.
Note	For laboratory research only, not for drug, diagnostic or other use.

Bioinformation

Database links	<a href="#">GeneID: 2067 Human</a>  <a href="#">Swiss-port # P07992 Human</a>
Gene Symbol	ERCC1
Gene Full Name	excision repair cross-complementation group 1
Background	Isoform 1:Non-catalytic component of a structure-specific DNA repair endonuclease responsible for the 5'-incision during DNA repair.Responsible,in conjunction with SLX4,for the first step in the repair of interstrand cross-links (ICL).Participates in the processing of anaphase bridge-generating DNA structures,which consist in incompletely processed DNA lesions arising during S or G2 phase,and can result in cytokinesis failure.Also required for homology-directed repair (HDR) of DNA double-strand breaks,in conjunction with SLX4.
Function	Isoform 1: Non-catalytic component of a structure-specific DNA repair endonuclease responsible for the 5'-incision during DNA repair. Responsible, in conjunction with SLX4, for the first step in the repair of interstrand cross-links (ICL). Participates in the processing of anaphase bridge-generating DNA structures, which consist in incompletely processed DNA lesions arising during S or G2 phase, and can result in cytokinesis failure. Also required for homology-directed repair (HDR) of DNA double-strand breaks, in conjunction with SLX4. [UniProt]
Research Area	Cancer antibody; Gene Regulation antibody
Calculated Mw	33 kDa
Cellular Localization	Isoform 1: Nucleus. Isoform 2: Cytoplasm. Nucleus. Isoform 3: Nucleus. Isoform 4: Nucleus.

Images



ARG54172 anti-ERCC1 antibody WB image

Western blot: T47D cell lysate stained with ARG54172 anti-ERCC1 antibody at 1:1000 dilution.