

ARG54226 anti-CD103 / Integrin alpha E antibody [Ber-ACT8] (APC)

Package: 50 tests
Store at: 4°C

Summary

Product Description	APC-conjugated Mouse Monoclonal antibody [Ber-ACT8] recognizes CD103 / Integrin alpha E
Tested Reactivity	Hu, NHuPrm
Tested Application	FACS
Specificity	The clone Ber-ACT8 recognizes CD103 (alpha E integrin), a type I transmembrane glycoprotein primarily found on intestinal intraepithelial lymphocytes. HLDA V; WS Code A067
Host	Mouse
Clonality	Monoclonal
Clone	Ber-ACT8
Isotype	IgG1
Target Name	CD103 / Integrin alpha E
Species	Human
Immunogen	HTLV-1 induced human T cell line MAPS16
Conjugation	APC
Alternate Names	CD103; HUMINAE; Integrin alpha-E; Mucosal lymphocyte 1 antigen; CD antigen CD103; HML-1 antigen; Integrin alpha-IEL

Application Instructions

Application table	Application	Dilution
	FACS	10 µl / 10 ⁶ cells
Application Note	* The dilutions indicate recommended starting dilutions and the optimal dilutions or concentrations should be determined by the scientist.	

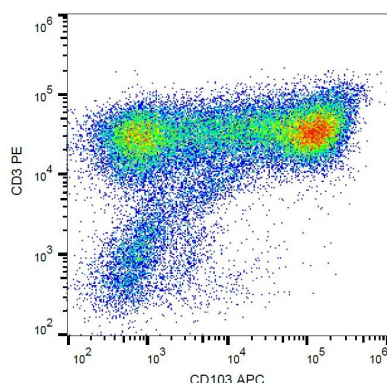
Properties

Form	Liquid
Purification Note	The purified antibody is conjugated with cross-linked Allophycocyanin (APC) under optimum conditions. The conjugate is purified by size-exclusion chromatography and adjusted for direct use. No reconstitution is necessary.
Buffer	PBS, 15 mM Sodium azide and 0.2% (w/v) high-grade protease free BSA
Preservative	15 mM Sodium azide
Stabilizer	0.2% (w/v) high-grade protease free BSA
Storage instruction	Aliquot and store in the dark at 2-8°C. Keep protected from prolonged exposure to light. Avoid repeated freeze/thaw cycles. Suggest spin the vial prior to opening. The antibody solution should be gently mixed before use.

Bioinformation

Database links	GeneID: 3682 Human Swiss-port # P38570 Human
Gene Symbol	ITGAE
Gene Full Name	integrin, alpha E (antigen CD103, human mucosal lymphocyte antigen 1; alpha polypeptide)
Background	CD103 / Integrin alphaE is an integrin subunit that is expressed on intraepithelial lymphocytes, epithelial dendritic cells, lamina propria-derived dendritic cells, a subpopulation of lamina propria T cells, a small subset of peripheral lymphocytes, namely T reg cells, and on activated and TGF-beta stimulated lymphocytes. CD103 is in mature form cleaved into two disulfide-linked chains (C-terminal 150 kDa chain and N-terminal 25 kDa chain). It heterodimerizes with integrin beta7 subunit to form alphaE/beta7 integrin (mucosal lymphocyte 1 antigen), which through binding E-cadherin mediates homing of lymphocytes to the intestinal epithelium, and, in addition to the role in adhesion, may serve as an accessory molecule for intraepithelial lymphocyte activation.
Function	Integrin alpha-E/beta-7 is a receptor for E-cadherin. It mediates adhesion of intra-epithelial T-lymphocytes to epithelial cell monolayers. [UniProt]
Research Area	Developmental Biology antibody; Immune System antibody; Signaling Transduction antibody
Calculated Mw	130 kDa

Images



ARG54226 anti-CD103 / Integrin alpha E antibody [Ber-ACT8] (APC)
FACS image

Flow Cytometry: PHA-activated PBMC stained with ARG54226 anti-CD103 / Integrin alpha E antibody [Ber-ACT8] (APC).