

## ARG54238 anti-CLIC5a antibody [CLIC5-02] (PE)

Package: 50 µg  
Store at: 4°C

### Summary

Product Description	PE-conjugated Mouse Monoclonal antibody [CLIC5-02] recognizes CLIC5a
Tested Reactivity	Hu
Tested Application	FACS
Specificity	The clone CLIC5-02 recognizes CLIC5a, a 32 kDa protein which is component of actin complexes. Crossreactivity with CLIC5b was not determined.
Host	Mouse
Clonality	Monoclonal
Clone	CLIC5-02
Isotype	IgG2b
Target Name	CLIC5a
Species	Human
Immunogen	KLH-conjugated peptide corresponding to the amino acids 160-173 of human CLIC5a
Conjugation	PE
Alternate Names	Chloride intracellular channel protein 5; DFNB102; DFNB103; MST130; MSTP130

### Application Instructions

Application table	Application	Dilution
	FACS	1 - 5 µg/ml
Application Note	* The dilutions indicate recommended starting dilutions and the optimal dilutions or concentrations should be determined by the scientist.	

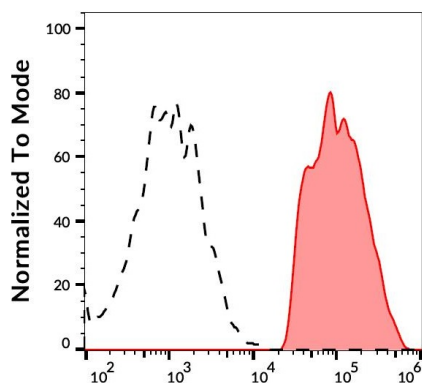
### Properties

Form	Liquid
Purification Note	The purified antibody is conjugated with R-Phycoerythrin (PE) under optimum conditions. The conjugate was purified by size-exclusion chromatography.
Buffer	PBS, 15 mM Sodium azide and 0.2% (w/v) high-grade protease free BSA
Preservative	15 mM Sodium azide
Stabilizer	0.2% (w/v) high-grade protease free BSA
Concentration	0.1 mg/ml
Storage instruction	Aliquot and store in the dark at 2-8°C. Keep protected from prolonged exposure to light. Avoid repeated freeze/thaw cycles. Suggest spin the vial prior to opening. The antibody solution should be gently mixed before use.

## Bioinformation

Database links	<a href="#">GeneID: 53405 Human</a> <a href="#">Swiss-port # Q9NZA1 Human</a>
Gene Symbol	CLIC5
Gene Full Name	chloride intracellular channel 5
Background	CLIC5a belongs to the family of chloride intracellular channel (CLIC) proteins, all sharing a highly conserved C terminus and variable N terminus. Human CLIC5 is transcribed in two isoforms, 32 kDa CLIC5a (251 amino acids) and 49 kDa CLIC5b (410 amino acids). These proteins exist in a soluble form and their function as ion channels in vitro has not been fully confirmed in vivo. CLIC5a is a component of complexes of actin, ezrin, and several other actin-associated proteins and is important for functionality of actin-based structures.
Function	Required for normal hearing (PubMed:24781754). It is necessary for the formation of stereocilia in the inner ear and normal development of the organ of Corti (By similarity). Can insert into membranes and form poorly selective ion channels that may also transport chloride ions. May play a role in the regulation of transepithelial ion absorption and secretion. Is required for the development and/or maintenance of the proper glomerular endothelial cell and podocyte architecture (PubMed:15184393, PubMed:18028448, PubMed:20335315). [UniProt]
Research Area	Metabolism antibody; Signaling Transduction antibody
Calculated Mw	47 kDa

## Images



ARG54238 anti-CLIC5a antibody [CLIC5-02] (PE) FACS image

Flow Cytometry: Separation of unstained (black-dashed) and stained (red-filled) CLIC5 transfected HEK293 cells. Cells were stained with ARG54238 anti-CLIC5a antibody [CLIC5-02] (PE) at 3 µg/ml dilution.