

## ARG54312 anti-CD13 antibody [WM15] (PerCP)

Package: 50 tests  
Store at: 4°C

### Summary

Product Description	PerCP-conjugated Mouse Monoclonal antibody [WM15] recognizes CD13
Tested Reactivity	Hu, NHuPrm
Tested Application	FACS
Specificity	The clone WM15 recognises the human CD13 cell surface glycoprotein, a 150 kDa molecule expressed on granulocytes, endothelial cells, epithelial cells and myeloid progenitors. HLDA III; WS Code M 213 HLDA IV; WS Code M 44 HLDA IV; WS Code M 209 HLDA V; WS Code M MA191
Host	Mouse
Clonality	Monoclonal
Clone	WM15
Isotype	IgG1
Target Name	CD13
Species	Human
Immunogen	Human AML cells
Conjugation	PerCP
Alternate Names	AP-N; PEPN; LAP1; CD antigen CD13; Aminopeptidase M; gp150; Aminopeptidase N; EC 3.4.11.2; Myeloid plasma membrane glycoprotein CD13; APN; CD13; P150; AP-M; GP150; hAPN; Microsomal aminopeptidase; Alanyl aminopeptidase

### Application Instructions

Application table	Application	Dilution
	FACS	10 µl / 10 <sup>6</sup> cells
Application Note	* The dilutions indicate recommended starting dilutions and the optimal dilutions or concentrations should be determined by the scientist.	

### Properties

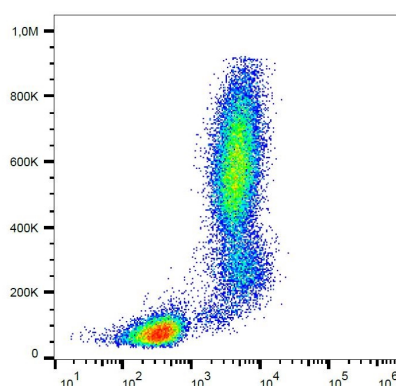
Form	Liquid
Purification Note	The purified antibody is conjugated with Peridinin-chlorophyll-protein complex (PerCP) under optimum conditions. The conjugate is purified by size-exclusion chromatography and adjusted for direct use. No reconstitution is necessary.
Buffer	PBS, 15 mM Sodium azide and 0.2% (w/v) high-grade protease free BSA
Preservative	15 mM Sodium azide

Stabilizer	0.2% (w/v) high-grade protease free BSA
Storage instruction	Aliquot and store in the dark at 2-8°C. Keep protected from prolonged exposure to light. Avoid repeated freeze/thaw cycles. Suggest spin the vial prior to opening. The antibody solution should be gently mixed before use.
Note	For laboratory research only, not for drug, diagnostic or other use.

## Bioinformation

Database links	<a href="#">GeneID: 290 Human</a> <a href="#">Swiss-port # P15144 Human</a>
Gene Symbol	ANPEP
Gene Full Name	alanyl (membrane) aminopeptidase
Background	CD13 (aminopeptidase N, APN) is a 150 kDa type II transmembrane zinc-binding ectopeptidase expressed on various cell types. This metalloprotease preferentially catalyzes removal of neutral amino acids from small peptides, thus activating or inactivating bioactive peptides. CD13 has also role in extracellular matrix degradation, antigen processing and signal transduction, is important in inflammatory responses, regulates intercellular contact, cell motility and vascularization. CD13 is involved in protection of leukemic cells against apoptosis and its expression associated with poor prognosis of carcinomas.
Function	Broad specificity aminopeptidase. Plays a role in the final digestion of peptides generated from hydrolysis of proteins by gastric and pancreatic proteases. May play a critical role in the pathogenesis of cholesterol gallstone disease. May be involved in the metabolism of regulatory peptides of diverse cell types, responsible for the processing of peptide hormones, such as angiotensin III and IV, neuropeptides, and chemokines. Found to cleave antigen peptides bound to major histocompatibility complex class II molecules of presenting cells and to degrade neurotransmitters at synaptic junctions. Is also implicated as a regulator of IL-8 bioavailability in the endometrium, and therefore may contribute to the regulation of angiogenesis. Is used as a marker for acute myeloid leukemia and plays a role in tumor invasion. In case of human coronavirus 229E (HCoV-229E) infection, serves as receptor for HCoV-229E spike glycoprotein. Mediates as well human cytomegalovirus (HCMV) infection. [UniProt]
Research Area	Developmental Biology antibody; Immune System antibody
Calculated Mw	110 kDa
PTM	Sulfated. N- and O-glycosylated. May undergo proteolysis and give rise to a soluble form.

## Images



ARG54312 anti-CD13 antibody [WM15] (PerCP) FACS image

Flow Cytometry: Human peripheral blood leukocytes stained with ARG54312 anti-CD13 antibody [WM15] (PerCP).