

ARG54341 anti-GPR15 / BOB antibody

Package: 50 µg
Store at: -20°C

Summary

Product Description	Rabbit Polyclonal antibody recognizes GPR15 / BOB
Tested Reactivity	Hu
Tested Application	ICC/IF, WB
Specificity	This antibody recognizes GPR15/BOB of human, mouse, and rat (50 kD).
Host	Rabbit
Clonality	Polyclonal
Isotype	IgG
Target Name	GPR15 / BOB
Species	Human
Immunogen	Peptide corresponding to aa 13-28 of human GPR15. This sequence differs from those of African green monkey and pig-tailed macaque BOB by one amino acid.
Conjugation	Un-conjugated
Alternate Names	BoB; BOB; Brother of Bonzo; G-protein coupled receptor 15

Application Instructions

Application table	Application	Dilution
	ICC/IF	5-20 µg/ml
	WB	1 µg/mL
Application Note	Western blot: use at 1:500 - 1:2,000 dilution. * The dilutions indicate recommended starting dilutions and the optimal dilutions or concentrations should be determined by the scientist.	
Positive Control	Jurkat, A549	

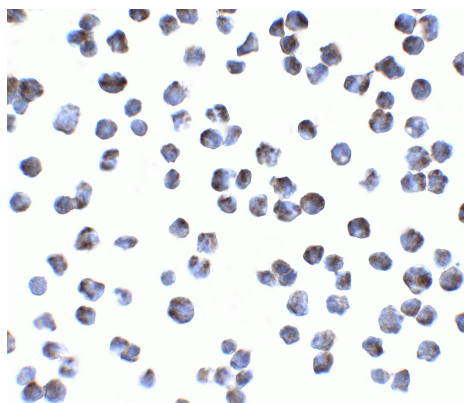
Properties

Form	Liquid
Purification	Immunoaffinity chroma-tography
Buffer	PBS (pH 7.4) and 0.02% Sodium azide
Preservative	0.02% Sodium azide
Storage instruction	For continuous use, store undiluted antibody at 2-8°C for up to a week. For long-term storage, aliquot and store at -20°C or below. Storage in frost free freezers is not recommended. Avoid repeated freeze/thaw cycles. Suggest spin the vial prior to opening. The antibody solution should be gently mixed before use.
Note	For laboratory research only, not for drug, diagnostic or other use.

Bioinformation

Database links	GeneID: 2838 Human Swiss-port # P49685 Human
Gene Symbol	GPR15
Gene Full Name	G protein-coupled receptor 15
Background	Human immunodeficiency virus (HIV) and related viruses require co-receptors to infect target cells. Some G protein-coupled receptors including CCR5, CXCR4, CCR3, CCR2b, and CCR8 in the chemokine receptor family, and four new human molecules GPR15, STRL33, GPR1, and V28 have been recently identified as HIV co-receptors. The genes encoding human and monkey GPR15/BOB (for G protein-coupled receptor 15 and brother of Bonzo) have been cloned. This novel g protein-coupled receptor serves as co-receptor for SIV and for strains of HIV-2 and M-tropic HIV-1. The ligand for GPR15 is under investigation.
Function	Probable chemokine receptor. Alternative coreceptor with CD4 for HIV-1 infection. [UniProt]
Research Area	Neuroscience antibody; Signaling Transduction antibody
Calculated Mw	41 kDa

Images



ARG54341 anti-GPR15 / BOB antibody ICC/IF image

A431 stained with ARG54341 anti-GPR15 / BOB antibody at 5 µg/ml dilution.