

ARG54698 anti-B Raf antibody

Package: 100 µl
Store at: -20°C

Summary

Product Description	Rabbit Polyclonal antibody recognizes B Raf
Tested Reactivity	Hu
Predict Reactivity	Ms, Chk
Tested Application	FACS, ICC/IF, IHC-P, WB
Host	Rabbit
Clonality	Polyclonal
Isotype	IgG
Target Name	B Raf
Species	Human
Immunogen	KLH-conjugated synthetic peptide corresponding to aa. 424-453 of Human B Raf (NP_004324.2).
Conjugation	Un-conjugated
Alternate Names	BRAF1; v-Raf murine sarcoma viral oncogene homolog B1; Proto-oncogene B-Raf; p94; Serine/threonine-protein kinase B-raf; RAFB1; EC 2.7.11.1; B-RAF1; NS7

Application Instructions

Application table	Application	Dilution
	FACS	1:10 - 1:50
	ICC/IF	1:10 - 1:50
	IHC-P	Assay-dependent
	WB	1:1000
Application Note	* The dilutions indicate recommended starting dilutions and the optimal dilutions or concentrations should be determined by the scientist.	

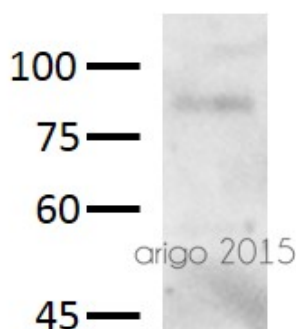
Properties

Purification	Protein A purified
Buffer	PBS and 0.09% (W/V) Sodium azide
Preservative	0.09% (W/V) Sodium azide
Storage instruction	For continuous use, store undiluted antibody at 2-8°C for up to a week. For long-term storage, aliquot and store at -20°C or below. Storage in frost free freezers is not recommended. Avoid repeated freeze/thaw cycles. Suggest spin the vial prior to opening. The antibody solution should be gently mixed before use.
Note	For laboratory research only, not for drug, diagnostic or other use.

Bioinformation

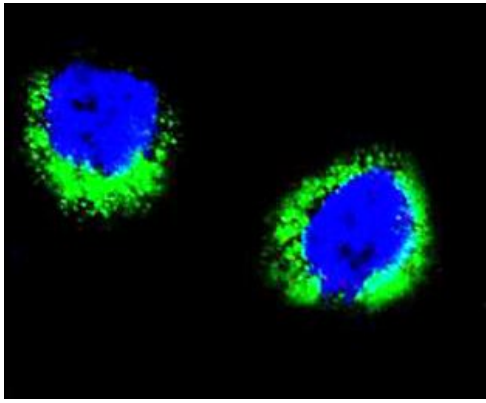
Database links	GeneID: 673 Human Swiss-port # P15056 Human
Gene Symbol	BRAF
Gene Full Name	B-Raf proto-oncogene, serine/threonine kinase
Background	This gene encodes a protein belonging to the raf/mil family of serine/threonine protein kinases. This protein plays a role in regulating the MAP kinase/ERKs signaling pathway, which affects cell division, differentiation, and secretion. Mutations in this gene are associated with cardiofaciocutaneous syndrome, a disease characterized by heart defects, mental retardation and a distinctive facial appearance. Mutations in this gene have also been associated with various cancers, including non-Hodgkin lymphoma, colorectal cancer, malignant melanoma, thyroid carcinoma, non-small cell lung carcinoma, and adenocarcinoma of lung. A pseudogene, which is located on chromosome X, has been identified for this gene. [provided by RefSeq, Jul 2008]
Function	Protein kinase involved in the transduction of mitogenic signals from the cell membrane to the nucleus. May play a role in the postsynaptic responses of hippocampal neuron. Phosphorylates MAP2K1, and thereby contributes to the MAP kinase signal transduction pathway. [From Uniprot]
Research Area	Cancer antibody; Cell Biology and Cellular Response antibody; Cell Death antibody; Signaling Transduction antibody
Calculated Mw	84 kDa
PTM	Phosphorylation at Ser-365 by SGK1 inhibits its activity. Methylation at Arg-671 decreases stability and kinase activity. Ubiquitinated by RNF149; which leads to proteasomal degradation. Polyubiquitinated at Lys-578 in response to EGF.
Cellular Localization	Nucleus. Cytoplasm. Cell membrane. Note=Colocalizes with RGS14 and RAF1 in both the cytoplasm and membranes.

Images



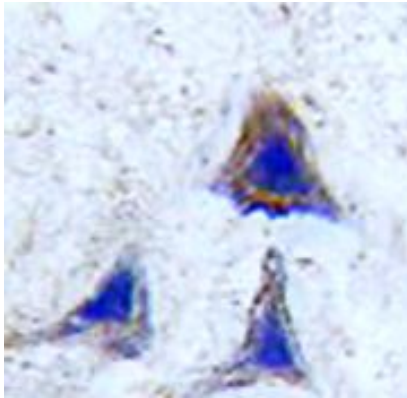
ARG54698 anti-B Raf antibody WB image

Western blot: 30 µg of U87 cell lysate stained with ARG54698 anti-B Raf antibody at 1:500 dilution.



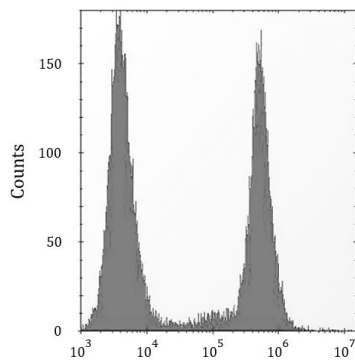
ARG54698 anti-B Raf antibody ICC/IF image

Immunofluorescence: HeLa cells stained with ARG54698 anti-B Raf antibody. DAPI (blue) for nuclear staining.



ARG54698 anti-B Raf antibody IHC-P image

Immunohistochemistry: Paraffin-embedded Human brain tissue stained with ARG54698 anti-B Raf antibody.



ARG54698 anti-B Raf antibody FACS image

Flow Cytometry: HeLa cells stained with ARG54698 anti-B Raf antibody (right histogram) or without primary antibody control (left histogram).