

ARG54708 anti-LC3C antibody

Package: 100 µl
Store at: -20°C

Summary

Product Description	Rabbit Polyclonal antibody recognizes LC3C
Tested Reactivity	Hu
Tested Application	IHC-P, WB
Host	Rabbit
Clonality	Polyclonal
Isotype	IgG
Target Name	LC3C
Species	Human
Immunogen	KLH-conjugated synthetic peptide corresponding to aa. 1-30 (N-terminus) of Human LC3C (NP_001004343.1).
Conjugation	Un-conjugated
Alternate Names	Microtubule-associated proteins 1A/1B light chain 3C; MAP1A/MAP1B light chain 3 C; ATG8J; Microtubule-associated protein 1 light chain 3 gamma; MAP1 light chain 3-like protein 3; MAP1A/MAP1B LC3 C; Autophagy-related protein LC3 C; LC3C; Autophagy-related ubiquitin-like modifier LC3 C

Application Instructions

Application table	Application	Dilution
	IHC-P	Assay-dependent
	WB	1:1000
Application Note	* The dilutions indicate recommended starting dilutions and the optimal dilutions or concentrations should be determined by the scientist.	
Positive Control	T47D	

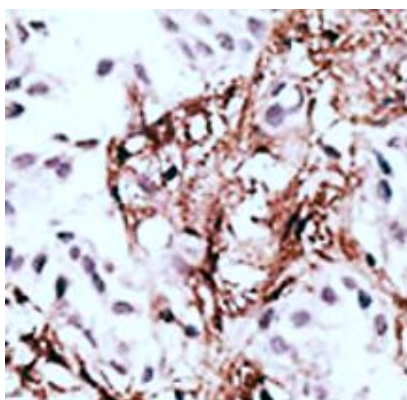
Properties

Purification	This antibody is prepared by Saturated Ammonium Sulfate (SAS) precipitation followed by dialysis against PBS.
Buffer	PBS and 0.09% (W/V) Sodium azide
Preservative	0.09% (W/V) Sodium azide
Storage instruction	For continuous use, store undiluted antibody at 2-8°C for up to a week. For long-term storage, aliquot and store at -20°C or below. Storage in frost free freezers is not recommended. Avoid repeated freeze/thaw cycles. Suggest spin the vial prior to opening. The antibody solution should be gently mixed before use.
Note	For laboratory research only, not for drug, diagnostic or other use.

Bioinformation

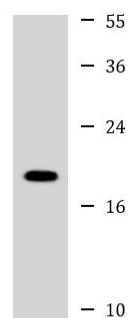
Database links	GeneID: 440738 Human Swiss-port # Q9BXW4 Human
Gene Symbol	MAP1LC3C
Gene Full Name	microtubule-associated protein 1 light chain 3 gamma
Background	Autophagy is a highly regulated bulk degradation process that plays an important role in cellular maintenance and development. MAP1LC3C is an ortholog of the yeast autophagosome protein Atg8 (He et al., 2003 [PubMed 12740394]).[supplied by OMIM, Nov 2010]
Function	Ubiquitin-like modifier that plays a crucial role in antibacterial autophagy (xenophagy) through the selective binding of CALCOCO2. Recruits all ATG8 family members to infecting bacteria such as <i>S.Typhimurium</i> . [From Uniprot]
Research Area	Cancer antibody; Cell Biology and Cellular Response antibody; Cell Death antibody; Metabolism antibody; Signaling Transduction antibody
Calculated Mw	17 kDa
PTM	The precursor molecule is cleaved by ATG4B to form the cytosolic form, LC3-I. This is activated by APG7L/ATG7, transferred to ATG3 and conjugated to phospholipid to form the membrane-bound form, LC3-II (PubMed:15187094). The Legionella effector RavZ is a deconjugating enzyme that produces an ATG8 product that would be resistant to re-conjugation by the host machinery due to the cleavage of the reactive C-terminal glycine.
Cellular Localization	Cytoplasm, cytoskeleton. Endomembrane system; Lipid-anchor. Cytoplasmic vesicle, autophagosome membrane; Lipid-anchor. Note=LC3-II binds to the autophagic membranes

Images



ARG54708 anti-LC3C antibody IHC-P image

Immunohistochemistry: Paraffin-embedded Human cancer tissue stained with ARG54708 anti-LC3C antibody.



T47D

ARG54708 anti-LC3C antibody WB image

Western blot: 35 µg of T47D cell lysate stained with ARG54708 anti-LC3C antibody at 1:1000 dilution.