

ARG54724 anti-CCL2 / MCP1 antibody

Package: 100 µl
Store at: -20°C

Summary

Product Description	Rabbit Polyclonal antibody recognizes CCL2 / MCP1
Tested Reactivity	Hu
Predict Reactivity	Mk
Tested Application	FACS, ICC/IF, IHC-P, WB
Host	Rabbit
Clonality	Polyclonal
Isotype	IgG
Target Name	CCL2 / MCP1
Species	Human
Immunogen	KLH-conjugated synthetic peptide corresponding to aa. 62-89 (C-terminus) of Human CCL2 (NP_002973.1).
Conjugation	Un-conjugated
Alternate Names	MCP1; Monocyte chemotactic and activating factor; MCAF; Monocyte chemotactic protein 1; Monocyte secretory protein JE; HSMCR30; Small-inducible cytokine A2; HC11; SMC-CF; GDCF-2; SCYA2; C-C motif chemokine 2; Monocyte chemoattractant protein 1; MCP-1

Application Instructions

Application table	Application	Dilution
	FACS	1:10 - 1:50
	ICC/IF	1:10 - 1:50
	IHC-P	Assay-dependent
	WB	1:1000
Application Note	* The dilutions indicate recommended starting dilutions and the optimal dilutions or concentrations should be determined by the scientist.	
Positive Control	HeLa	

Properties

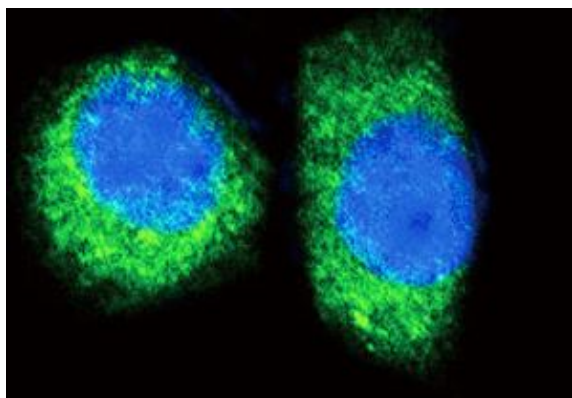
Purification	This antibody is prepared by Saturated Ammonium Sulfate (SAS) precipitation followed by dialysis against PBS.
Buffer	PBS and 0.09% (W/V) Sodium azide
Preservative	0.09% (W/V) Sodium azide
Storage instruction	For continuous use, store undiluted antibody at 2-8°C for up to a week. For long-term storage, aliquot and store at -20°C or below. Storage in frost free freezers is not recommended. Avoid repeated

freeze/thaw cycles. Suggest spin the vial prior to opening. The antibody solution should be gently mixed before use.

Note For laboratory research only, not for drug, diagnostic or other use.

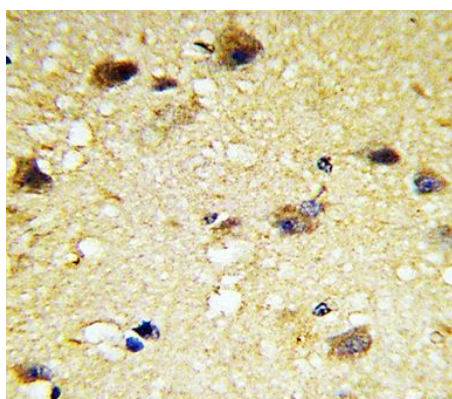
Bioinformation

Database links	GeneID: 6347 Human Swiss-port # P13500 Human
Gene Symbol	CCL2
Gene Full Name	chemokine (C-C motif) ligand 2
Background	This gene is one of several cytokine genes clustered on the q-arm of chromosome 17. Chemokines are a superfamily of secreted proteins involved in immunoregulatory and inflammatory processes. The superfamily is divided into four subfamilies based on the arrangement of N-terminal cysteine residues of the mature peptide. This chemokine is a member of the CC subfamily which is characterized by two adjacent cysteine residues. This cytokine displays chemotactic activity for monocytes and basophils but not for neutrophils or eosinophils. It has been implicated in the pathogenesis of diseases characterized by monocytic infiltrates, like psoriasis, rheumatoid arthritis and atherosclerosis. It binds to chemokine receptors CCR2 and CCR4. [provided by RefSeq, Jul 2013]
Function	Chemotactic factor that attracts monocytes and basophils but not neutrophils or eosinophils. Augments monocyte anti-tumor activity. Has been implicated in the pathogenesis of diseases characterized by monocytic infiltrates, like psoriasis, rheumatoid arthritis or atherosclerosis. May be involved in the recruitment of monocytes into the arterial wall during the disease process of atherosclerosis. [From Uniprot]
Highlight	Related products: MCP1 antibodies ; MCP1 ELISA Kits ; MCP1 Duos / Panels ; Related news: HMGB1 in inflammation Inflammatory Cytokines
Research Area	Cancer antibody; Cell Biology and Cellular Response antibody; Immune System antibody; Metabolism antibody
Calculated Mw	11 kDa
PTM	Processing at the N-terminus can regulate receptor and target cell selectivity. Deletion of the N-terminal residue converts it from an activator of basophil to an eosinophil chemoattractant.
Cellular Localization	Secreted.



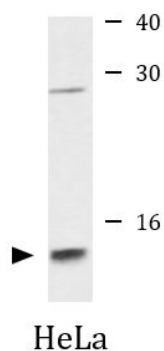
ARG54724 anti-CCL2 / MCP1 antibody ICC/IF image

Immunofluorescence: HeLa cells stained with ARG54724 anti-CCL2 / MCP1 antibody (green). DAPI (blue) for nuclear staining.



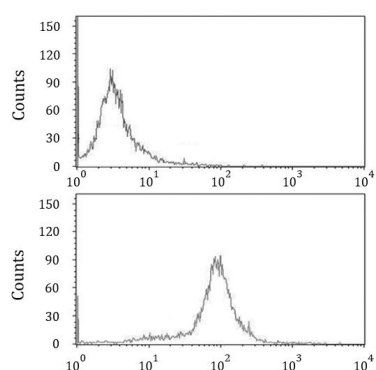
ARG54724 anti-CCL2 / MCP1 antibody IHC-P image

Immunohistochemistry: Paraffin-embedded Human brain tissue stained with ARG54724 anti-CCL2 / MCP1 antibody.



ARG54724 anti-CCL2 / MCP1 antibody WB image

Western blot: 35 µg of HeLa cell lysate stained with ARG54724 anti-CCL2 / MCP1 antibody.



ARG54724 anti-CCL2 / MCP1 antibody FACS image

Flow Cytometry: HeLa cells stained with ARG54724 anti-CCL2 / MCP1 antibody (bottom histogram) or without primary antibody control (top histogram).