

ARG54735 anti-Calpain 1 antibody [1376CT809.24.85]

Package: 100 µl
Store at: -20°C

Summary

Product Description	Mouse Monoclonal antibody recognizes Calpain 1
Tested Reactivity	Hu
Tested Application	FACS, IHC-P, WB
Host	Mouse
Clonality	Monoclonal
Clone	1376CT809.24.85
Isotype	IgG1 Kappa
Target Name	Calpain 1
Species	Human
Immunogen	KLH-conjugated synthetic peptide from Human CAPN1 protein (NP_001185797.1).
Conjugation	Un-conjugated
Alternate Names	EC 3.4.22.52; CANP1; Calpain-1 large subunit; Calpain-1 catalytic subunit; Calpain mu-type; muCANP; Cell proliferation-inducing gene 30 protein; Micromolar-calpain; CANP 1; CANP; muCL; CANPL1; Calcium-activated neutral proteinase 1

Application Instructions

Application table	Application	Dilution
	FACS	1:25
	IHC-P	Assay-dependent
	WB	1:1000
Application Note	* The dilutions indicate recommended starting dilutions and the optimal dilutions or concentrations should be determined by the scientist.	

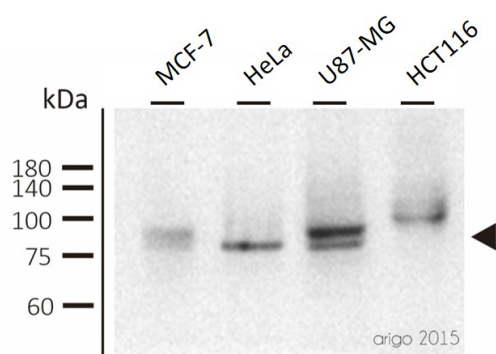
Properties

Purification	Protein G purified
Buffer	PBS and 0.09% (W/V) Sodium azide
Preservative	0.09% (W/V) Sodium azide
Storage instruction	For continuous use, store undiluted antibody at 2-8°C for up to a week. For long-term storage, aliquot and store at -20°C or below. Storage in frost free freezers is not recommended. Avoid repeated freeze/thaw cycles. Suggest spin the vial prior to opening. The antibody solution should be gently mixed before use.
Note	For laboratory research only, not for drug, diagnostic or other use.

Bioinformation

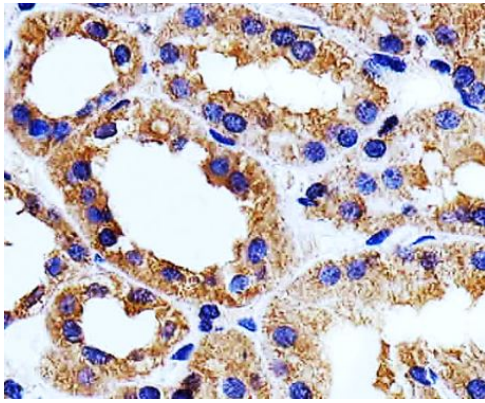
Database links	GeneID: 823 Human Swiss-port # P07384 Human
Gene Symbol	CAPN1
Gene Full Name	calpain 1, (mu/I) large subunit
Background	The calpains, calcium-activated neutral proteases, are nonlysosomal, intracellular cysteine proteases. The mammalian calpains include ubiquitous, stomach-specific, and muscle-specific proteins. The ubiquitous enzymes consist of heterodimers with distinct large, catalytic subunits associated with a common small, regulatory subunit. This gene encodes the large subunit of the ubiquitous enzyme, calpain 1. Several transcript variants encoding two different isoforms have been found for this gene. [provided by RefSeq, Nov 2010]
Function	Calcium-regulated non-lysosomal thiol-protease which catalyze limited proteolysis of substrates involved in cytoskeletal remodeling and signal transduction. [From Uniprot]
Highlight	Related products: Calpain1 antibodies: Related poster download: The NF-kappa B Pathways.pdf
Research Area	Cell Biology and Cellular Response antibody; Signaling Transduction antibody
Calculated Mw	82 kDa
PTM	Undergoes calcium-induced successive autoproteolytic cleavages that generate a membrane-bound 78 kDa active form and an intracellular 75 kDa active form. Calpastatin reduces with high efficiency the transition from 78 kDa to 75 kDa calpain forms.
Cellular Localization	Cytoplasm. Cell membrane. Note=Translocates to the plasma membrane upon Ca(2+) binding

Images



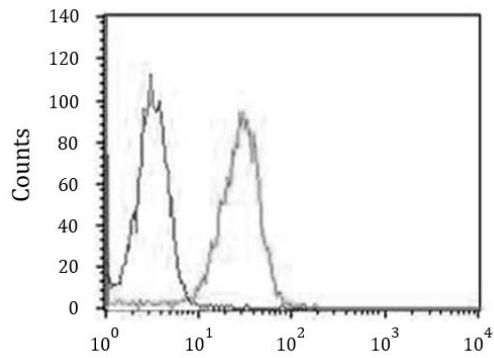
ARG54735 anti-Calpain 1 antibody WB image

Western blot: 30 µg of MCF-7, HeLa, U87-MG and HCT116 cell lysates stained with ARG54735 anti-Calpain 1 antibody at 1:500 dilution.



ARG54735 anti-Calpain 1 antibody IHC-P image

Immunohistochemistry: Paraffin-embedded Human kidney section stained with ARG54735 anti-Calpain 1 antibody at 1:25 dilution.



ARG54735 anti-Calpain 1 antibody FACS image

Flow Cytometry: HeLa cells stained with ARG54735 anti-Calpain 1 antibody (right histogram) at 1:25 dilution or isotype control antibody (left histogram), followed by incubation with Alexa Fluor® 488 labelled secondary antibody.