

ARG54798 anti-TIM3 antibody

Package: 100 µl
Store at: -20°C

Summary

Product Description	Rabbit Polyclonal antibody recognizes TIM3
Tested Reactivity	Hu, Ms, Rat
Tested Application	IHC-P, WB
Host	Rabbit
Clonality	Polyclonal
Isotype	IgG
Target Name	TIM3
Species	Human
Immunogen	Recombinant protein of Human TIM-3 (NP_116171.3)
Conjugation	Un-conjugated
Alternate Names	KIM-3; TIM3; TIMD-3; Tim-3; TIM-3; CD366; T-cell immunoglobulin and mucin domain-containing protein 3; TIMD3; T-cell membrane protein 3; HAVcr-2; T-cell immunoglobulin mucin receptor 3; Hepatitis A virus cellular receptor 2

Application Instructions

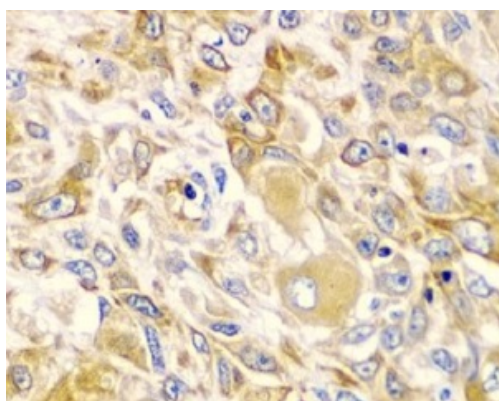
Application table	Application	Dilution
	IHC-P	1:50 - 1:200
	WB	1:500 - 1:2000
Application Note	* The dilutions indicate recommended starting dilutions and the optimal dilutions or concentrations should be determined by the scientist.	
Positive Control	Mouse spleen and BT474	

Properties

Form	Liquid
Purification	Affinity purification with immunogen.
Buffer	PBS (pH 7.3), 0.02% Sodium azide and 50% Glycerol
Preservative	0.02% Sodium azide
Stabilizer	50% Glycerol
Storage instruction	For continuous use, store undiluted antibody at 2-8°C for up to a week. For long-term storage, aliquot and store at -20°C. Storage in frost free freezers is not recommended. Avoid repeated freeze/thaw cycles. Suggest spin the vial prior to opening. The antibody solution should be gently mixed before use.
Note	For laboratory research only, not for drug, diagnostic or other use.

Database links	GeneID: 171285 Mouse GeneID: 84868 Human Swiss-port # Q8TDQ0 Human Swiss-port # Q8VIM0 Mouse
Gene Symbol	HAVCR2
Gene Full Name	hepatitis A virus cellular receptor 2
Background	The protein encoded by this gene belongs to the immunoglobulin superfamily, and TIM family of proteins. CD4-positive T helper lymphocytes can be divided into types 1 (Th1) and 2 (Th2) on the basis of their cytokine secretion patterns. Th1 cells are involved in cell-mediated immunity to intracellular pathogens and delayed-type hypersensitivity reactions, whereas, Th2 cells are involved in the control of extracellular helminthic infections and the promotion of atopic and allergic diseases. This protein is a Th1-specific cell surface protein that regulates macrophage activation, and inhibits Th1-mediated auto- and alloimmune responses, and promotes immunological tolerance. [provided by RefSeq, Sep 2011]
Function	Regulates macrophage activation. Inhibits T-helper type 1 lymphocyte (Th1)-mediated auto- and alloimmune responses and promotes immunological tolerance. May be also involved in T-cell homing. Receptor for LGALS9. [UniProt]
Highlight	Related products: Anti-Rabbit IgG secondary antibodies: Related news: New PD-1 ELISA Kit, excellent for preclinical studies or pharmaceutical development
Research Area	Immune System antibody
Calculated Mw	33 kDa
PTM	O-glycosylated with core 1 or possibly core 8 glycans. Phosphorylated on tyrosine residues; modestly increased after TCR/CD28 stimulation. Can be phosphorylated in the cytoplasmatic domain by FYN (By similarity). Phosphorylation at Tyr-265 is increased by stimulation with ligand LGALS9.

Images



ARG54798 anti-TIM3 antibody IHC-P image

Immunohistochemistry: Paraffin-embedded Human lung cancer stained with ARG54798 anti-TIM3 antibody at 1:100 dilution.

ARG54798 anti-TIM3 antibody WB image

Western blot: Mouse spleen and BT474 cell lysates stained with ARG54798 anti-TIM3 antibody.

