

## ARG54808 anti-ALG14 antibody

Package: 100 µl  
Store at: -20°C

### Summary

Product Description	Rabbit Polyclonal antibody recognizes ALG14
Tested Reactivity	Hu
Tested Application	FACS, IHC-P, WB
Host	Rabbit
Clonality	Polyclonal
Isotype	IgG
Target Name	ALG14
Species	Human
Immunogen	KLH-conjugated synthetic peptide corresponding to aa. 67-93 (Center) of Human ALG14.
Conjugation	Un-conjugated
Alternate Names	UDP-N-acetylglucosamine transferase subunit ALG14 homolog; CMS15

### Application Instructions

Application table	Application	Dilution
	FACS	1:10 - 1:50
	IHC-P	Assay-dependent
	WB	1:1000
Application Note	* The dilutions indicate recommended starting dilutions and the optimal dilutions or concentrations should be determined by the scientist.	
Positive Control	NCI-H460	

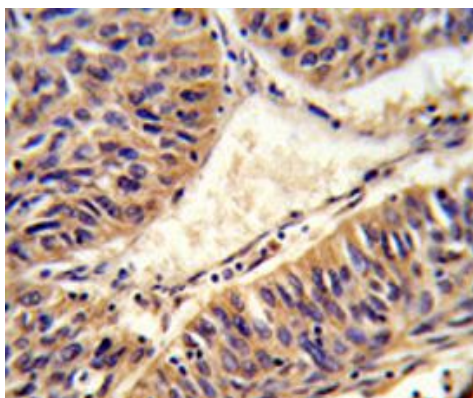
### Properties

Form	Liquid
Purification	Purification with Protein A and immunogen peptide.
Buffer	PBS and 0.09% (W/V) Sodium azide
Preservative	0.09% (W/V) Sodium azide
Storage instruction	For continuous use, store undiluted antibody at 2-8°C for up to a week. For long-term storage, aliquot and store at -20°C or below. Storage in frost free freezers is not recommended. Avoid repeated freeze/thaw cycles. Suggest spin the vial prior to opening. The antibody solution should be gently mixed before use.
Note	For laboratory research only, not for drug, diagnostic or other use.

## Bioinformation

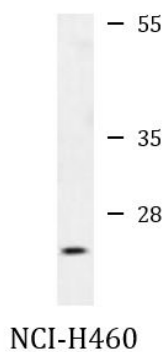
Database links	<a href="#">GeneID: 199857 Human</a> <a href="#">Swiss-port # Q96F25 Human</a>
Gene Symbol	ALG14
Gene Full Name	ALG14, UDP-N-acetylglucosaminyltransferase subunit
Background	This gene is a member of the glycosyltransferase 1 family. The encoded protein and ALG13 are thought to be subunits of UDP-GlcNAc transferase, which catalyzes the first two committed steps in endoplasmic reticulum N-linked glycosylation. Mutations in this gene have been linked to congenital myasthenic syndrome (CMSWTA). Alternatively spliced transcript variants have been identified. [provided by RefSeq, Mar 2015]
Function	May be involved in protein N-glycosylation. May play a role in the second step of the dolichol-linked oligosaccharide pathway. May anchor the catalytic subunit ALG13 to the ER. [UniProt]
Research Area	Controls and Markers antibody
Calculated Mw	24 kDa
Cellular Localization	Endoplasmic reticulum membrane; Single-pass membrane protein

## Images



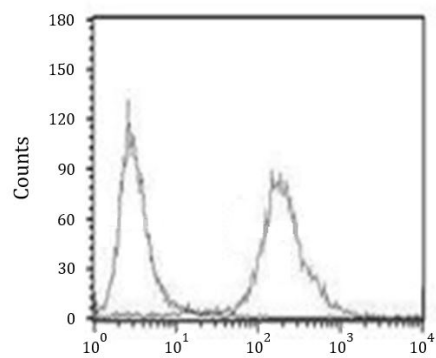
ARG54808 anti-ALG14 antibody IHC-P image

Immunohistochemistry: Formalin-fixed and paraffin-embedded Human lung carcinoma stained with ARG54808 anti-ALG14 antibody.



ARG54808 anti-ALG14 antibody WB image

Western blot: 35 µg of NCI-H460 cell lysate stained with ARG54808 anti-ALG14 antibody.



#### ARG54808 anti-ALG14 antibody FACS image

Flow Cytometry: NCI-H460 cells stained with ARG54808 anti-ALG14 antibody (right histogram) or without primary antibody control (left histogram), followed by incubation with FITC labelled secondary antibody.