

ARG54836 anti-CBS antibody

Package: 100 µl
Store at: -20°C

Summary

Product Description	Rabbit Polyclonal antibody recognizes CBS
Tested Reactivity	Hu, Ms
Tested Application	FACS, ICC/IF, IHC-P, WB
Host	Rabbit
Clonality	Polyclonal
Isotype	IgG
Target Name	CBS
Species	Human
Immunogen	KLH-conjugated synthetic peptide corresponding to aa. 104-133 (N-terminus) of Human CBS.
Conjugation	Un-conjugated
Alternate Names	Serine sulphydrase; Beta-thionase; AI047524; EC 4.2.1.22; Cystathionine beta-synthase; HIP4; AI303044

Application Instructions

Application table	Application	Dilution
	FACS	1:10 - 1:50
	ICC/IF	1:10 - 1:50
	IHC-P	Assay-dependent
	WB	1:1000
Application Note	* The dilutions indicate recommended starting dilutions and the optimal dilutions or concentrations should be determined by the scientist.	
Positive Control	Ramos	

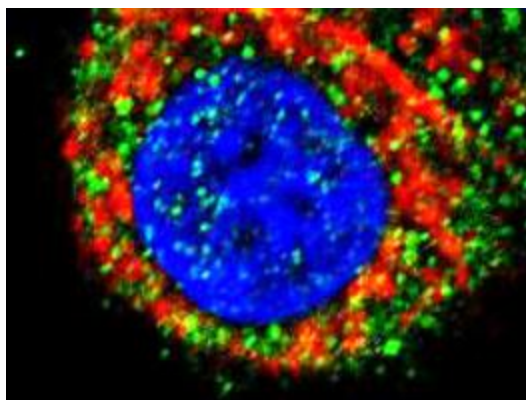
Properties

Form	Liquid
Purification	Purification with Protein A and immunogen peptide.
Buffer	PBS and 0.09% (W/V) Sodium azide
Preservative	0.09% (W/V) Sodium azide
Storage instruction	For continuous use, store undiluted antibody at 2-8°C for up to a week. For long-term storage, aliquot and store at -20°C or below. Storage in frost free freezers is not recommended. Avoid repeated freeze/thaw cycles. Suggest spin the vial prior to opening. The antibody solution should be gently mixed before use.
Note	For laboratory research only, not for drug, diagnostic or other use.

Bioinformation

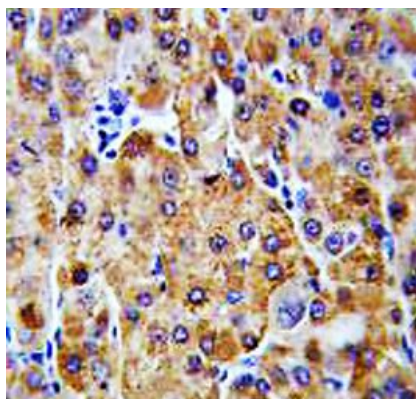
Database links	GeneID: 12411 Mouse GeneID: 875 Human Swiss-port # P35520 Human Swiss-port # Q91WT9 Mouse
Gene Symbol	CBS
Gene Full Name	cystathionine-beta-synthase
Background	The protein encoded by this gene acts as a homotetramer to catalyze the conversion of homocysteine to cystathionine, the first step in the transsulfuration pathway. The encoded protein is allosterically activated by adenosyl-methionine and uses pyridoxal phosphate as a cofactor. Defects in this gene can cause cystathionine beta-synthase deficiency (CBS), which can lead to homocystinuria. Multiple alternatively spliced transcript variants have been found for this gene. [provided by RefSeq, May 2010]
Function	Only known pyridoxal phosphate-dependent enzyme that contains heme. Important regulator of hydrogen sulfide, especially in the brain, utilizing cysteine instead of serine to catalyze the formation of hydrogen sulfide. Hydrogen sulfide is a gastratransmitter with signaling and cytoprotective effects such as acting as a neuromodulator in the brain to protect neurons against hypoxic injury (By similarity). [UniProt]
Research Area	Cancer antibody; Metabolism antibody; Signaling Transduction antibody
Calculated Mw	61 kDa
Cellular Localization	Cytoplasm. Nucleus

Images



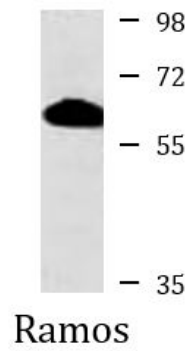
ARG54836 anti-CBS antibody ICC/IF image

Immunofluorescence: 293 cells stained with ARG54836 anti-CBS antibody (green). Actin filaments have been labeled with Alexa Fluor 555 phalloidin (red). DAPI (blue) for nuclear staining.



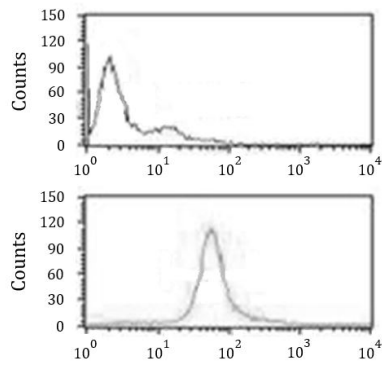
ARG54836 anti-CBS antibody IHC-P image

Immunohistochemistry: Formalin-fixed and paraffin-embedded Human hepatocarcinoma stained with ARG54836 anti-CBS antibody.



ARG54836 anti-CBS antibody WB image

Western blot: 35 µg of Ramos cell lysate stained with ARG54836 anti-CBS antibody.



ARG54836 anti-CBS antibody FACS image

Flow Cytometry: Ramos cells stained with ARG54836 anti-CBS antibody (bottom histogram) or without primary antibody control (top histogram), followed by incubation with FITC labelled secondary antibody.