

## ARG54904 anti-ATG4A antibody

Package: 100 µl  
Store at: -20°C

### Summary

Product Description	Rabbit Polyclonal antibody recognizes ATG4A
Tested Reactivity	Hu, Ms, Rat
Tested Application	ICC/IF, WB
Host	Rabbit
Clonality	Polyclonal
Isotype	IgG
Target Name	ATG4A
Species	Human
Immunogen	Recombinant protein of Human ATG4A (NP_443168.2)
Conjugation	Un-conjugated
Alternate Names	Cysteine protease ATG4A; Autophagin-2; AUT-like 2 cysteine endopeptidase; APG4A; Autophagy-related cysteine endopeptidase 2; EC 3.4.22.-; AUTL2; Autophagy-related protein 4 homolog A; hAPG4A

### Application Instructions

Application table	Application	Dilution
	ICC/IF	1:50 - 1:200
	WB	1:500 - 1:2000
Application Note	* The dilutions indicate recommended starting dilutions and the optimal dilutions or concentrations should be determined by the scientist.	
Positive Control	BT474	

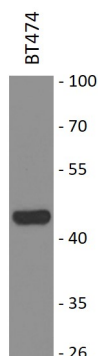
### Properties

Form	Liquid
Purification	Affinity purification with immunogen.
Buffer	PBS (pH 7.3), 0.02% Sodium azide and 50% Glycerol
Preservative	0.02% Sodium azide
Stabilizer	50% Glycerol
Storage instruction	For continuous use, store undiluted antibody at 2-8°C for up to a week. For long-term storage, aliquot and store at -20°C. Storage in frost free freezers is not recommended. Avoid repeated freeze/thaw cycles. Suggest spin the vial prior to opening. The antibody solution should be gently mixed before use.
Note	For laboratory research only, not for drug, diagnostic or other use.

## Bioinformation

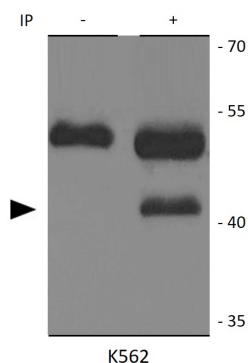
Database links	<a href="#">GeneID: 115201 Human</a> <a href="#">GeneID: 666468 Mouse</a> <a href="#">Swiss-port # Q8C9S8 Mouse</a> <a href="#">Swiss-port # Q8WYN0 Human</a>
Gene Symbol	ATG4A
Gene Full Name	autophagy related 4A, cysteine peptidase
Background	Autophagy is the process by which endogenous proteins and damaged organelles are destroyed intracellularly. Autophagy is postulated to be essential for cell homeostasis and cell remodeling during differentiation, metamorphosis, non-apoptotic cell death, and aging. Reduced levels of autophagy have been described in some malignant tumors, and a role for autophagy in controlling the unregulated cell growth linked to cancer has been proposed. This gene encodes a member of the autophagin protein family. The encoded protein is also designated as a member of the C-54 family of cysteine proteases. Transcript variants that encode distinct isoforms have been identified. [provided by RefSeq, Jul 2008]
Function	Cysteine protease required for the cytoplasm to vacuole transport (Cvt) and autophagy. Cleaves the C-terminal amino acid of ATG8 family proteins to reveal a C-terminal glycine. Exposure of the glycine at the C-terminus is essential for ATG8 proteins conjugation to phosphatidylethanolamine (PE) and insertion to membranes, which is necessary for autophagy. Preferred substrate is GABARAPL2 followed by MAP1LC3A and GABARAP. Has also an activity of delipidating enzyme for the PE-conjugated forms. [UniProt]
Research Area	Cancer antibody; Cell Biology and Cellular Response antibody; Cell Death antibody; Metabolism antibody
Calculated Mw	45 kDa

## Images



ARG54904 anti-ATG4A antibody WB image

Western blot: BT474 cell lysate stained with ARG54904 anti-ATG4A antibody.



ARG54904 anti-ATG4A antibody IP image

Immunoprecipitation: K562 cell lysate was immunoprecipitated and stained with ARG54904 anti-ATG4A antibody.