

ARG55024 anti-ZBTB22 antibody

Package: 100 µl
Store at: -20°C

Summary

Product Description	Rabbit Polyclonal antibody recognizes ZBTB22
Tested Reactivity	Hu
Predict Reactivity	Ms
Tested Application	WB
Host	Rabbit
Clonality	Polyclonal
Isotype	IgG
Target Name	ZBTB22
Species	Human
Immunogen	KLH-conjugated synthetic peptide corresponding to aa. 476-502 (C-terminus) of Human ZBTB22.
Conjugation	Un-conjugated
Alternate Names	fruitless; Protein BING1; Zinc finger and BTB domain-containing protein 22; ZNF297A; Zinc finger and BTB domain-containing protein 22A; fru; Zinc finger protein 297; ZNF297; ZBTB22A; BING1

Application Instructions

Application table	Application	Dilution
	WB	1:1000
Application Note	* The dilutions indicate recommended starting dilutions and the optimal dilutions or concentrations should be determined by the scientist.	
Positive Control	SH-SY5Y	

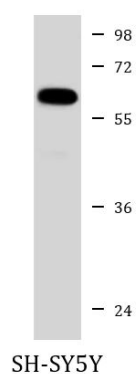
Properties

Form	Liquid
Purification	Purification with Protein A and immunogen peptide.
Buffer	PBS and 0.09% (W/V) Sodium azide
Preservative	0.09% (W/V) Sodium azide
Storage instruction	For continuous use, store undiluted antibody at 2-8°C for up to a week. For long-term storage, aliquot and store at -20°C or below. Storage in frost free freezers is not recommended. Avoid repeated freeze/thaw cycles. Suggest spin the vial prior to opening. The antibody solution should be gently mixed before use.
Note	For laboratory research only, not for drug, diagnostic or other use.

Bioinformation

Database links	GeneID: 9278 Human Swiss-port # O15209 Human
Gene Symbol	ZBTB22
Gene Full Name	zinc finger and BTB domain containing 22
Function	May be involved in transcriptional regulation. [UniProt]
Research Area	Gene Regulation antibody
Calculated Mw	66 kDa
Cellular Localization	Nucleus.

Images



ARG55024 anti-ZBTB22 antibody WB image

Western blot: 35 µg of SH-SY5Y cell lysate stained with ARG55024 anti-ZBTB22 antibody at 1:1000 dilution.