

ARG55026 anti-FACE1 / ZMPSTE24 antibody

Package: 100 µl
Store at: -20°C

Summary

Product Description	Rabbit Polyclonal antibody recognizes FACE1 / ZMPSTE24
Tested Reactivity	Hu, Ms
Tested Application	IHC-P, WB
Host	Rabbit
Clonality	Polyclonal
Isotype	IgG
Target Name	FACE1 / ZMPSTE24
Species	Human
Immunogen	KLH-conjugated synthetic peptide corresponding to aa. 400-430 (Center) of Human ZMPSTE24.
Conjugation	Un-conjugated
Alternate Names	CAAX prenyl protease 1 homolog; EC 3.4.24.84; STE24; Ste24p; HGPS; FACE-1; Farnesylated proteins-converting enzyme 1; FACE1; Prenyl protein-specific endoprotease 1; PRO1; Zinc metalloproteinase Ste24 homolog

Application Instructions

Application table	Application	Dilution
	IHC-P	Assay-dependent
	WB	1:1000
Application Note	* The dilutions indicate recommended starting dilutions and the optimal dilutions or concentrations should be determined by the scientist.	
Positive Control	Mouse cerebellum	

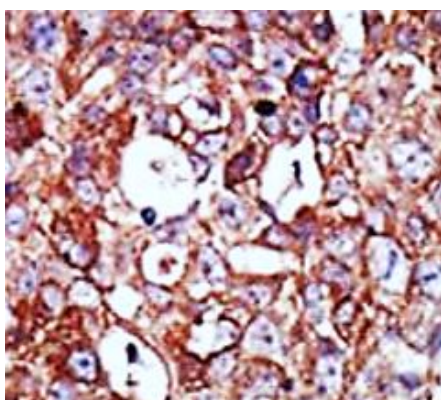
Properties

Form	Liquid
Purification	Purification with Protein G.
Buffer	PBS and 0.09% (W/V) Sodium azide
Preservative	0.09% (W/V) Sodium azide
Storage instruction	For continuous use, store undiluted antibody at 2-8°C for up to a week. For long-term storage, aliquot and store at -20°C or below. Storage in frost free freezers is not recommended. Avoid repeated freeze/thaw cycles. Suggest spin the vial prior to opening. The antibody solution should be gently mixed before use.
Note	For laboratory research only, not for drug, diagnostic or other use.

Bioinformation

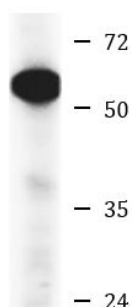
Database links	GeneID: 10269 Human GeneID: 230709 Mouse Swiss-port # O75844 Human Swiss-port # Q80W54 Mouse
Gene Symbol	ZMPSTE24
Gene Full Name	zinc metalloproteinase STE24
Background	This gene encodes a member of the peptidase M48A family. The encoded protein is a zinc metalloproteinase involved in the two step post-translational proteolytic cleavage of carboxy terminal residues of farnesylated prelamin A to form mature lamin A. Mutations in this gene have been associated with mandibuloacral dysplasia and restrictive dermopathy. [provided by RefSeq, Jul 2008]
Function	Proteolytically removes the C-terminal three residues of farnesylated proteins. Acts on lamin A/C. [UniProt]
Research Area	Cell Biology and Cellular Response antibody; Developmental Biology antibody; Signaling Transduction antibody
Calculated Mw	55 kDa
Cellular Localization	Endoplasmic reticulum membrane; Multi-pass membrane protein. Nucleus inner membrane; Multi-pass membrane protein

Images



ARG55026 anti-FACE1 / ZMPSTE24 antibody IHC-P image

Immunohistochemistry: Formalin-fixed and paraffin-embedded Human cancer tissue stained with ARG55026 anti-FACE1 / ZMPSTE24 antibody.



Mouse cerebellum

ARG55026 anti-FACE1 / ZMPSTE24 antibody WB image

Western blot: Mouse cerebellum lysate stained with ARG55026 anti-FACE1 / ZMPSTE24 antibody.