

## ARG55091 anti-MCM-BP antibody

Package: 100 µl  
Store at: -20°C

### Summary

Product Description	Rabbit Polyclonal antibody recognizes MCM-BP
Tested Reactivity	Hu
Predict Reactivity	Ms, Rat, Bov
Tested Application	FACS, IHC-P, WB
Host	Rabbit
Clonality	Polyclonal
Isotype	IgG
Target Name	MCM-BP
Species	Human
Immunogen	KLH-conjugated synthetic peptide corresponding to aa. 143-171 (N-terminus) of Human MCM-BP.
Conjugation	Un-conjugated
Alternate Names	C10orf119; MCM-binding protein; Mini-chromosome maintenance complex-binding protein; MCM-BP

### Application Instructions

Application table	Application	Dilution
	FACS	1:10 - 1:50
	IHC-P	Assay-dependent
	WB	1:1000
Application Note	* The dilutions indicate recommended starting dilutions and the optimal dilutions or concentrations should be determined by the scientist.	
Positive Control	MDA-MB-231	

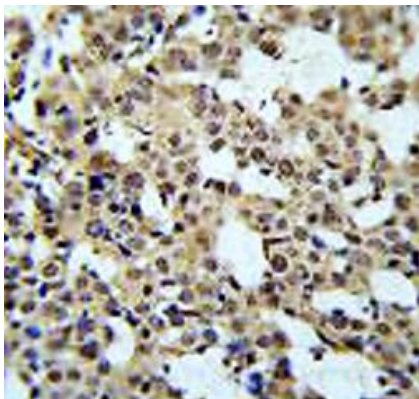
### Properties

Form	Liquid
Purification	Purification with Protein A and immunogen peptide.
Buffer	PBS and 0.09% (W/V) Sodium azide
Preservative	0.09% (W/V) Sodium azide
Storage instruction	For continuous use, store undiluted antibody at 2-8°C for up to a week. For long-term storage, aliquot and store at -20°C or below. Storage in frost free freezers is not recommended. Avoid repeated freeze/thaw cycles. Suggest spin the vial prior to opening. The antibody solution should be gently mixed before use.
Note	For laboratory research only, not for drug, diagnostic or other use.

Bioinformation

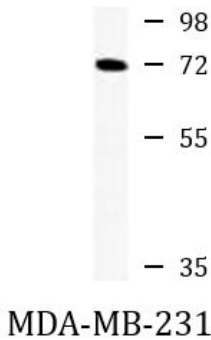
Database links	<a href="#">GeneID: 79892 Human</a> <a href="#">Swiss-port # Q9BTE3 Human</a>
Gene Symbol	MCMBP
Gene Full Name	minichromosome maintenance complex binding protein
Background	This gene encodes a protein which is a component of the hexameric minichromosome maintenance (MCM) complex which regulates initiation and elongation of DNA. Multiple transcript variants encoding different isoforms have been found for this gene. [provided by RefSeq, Jan 2012]
Function	Associated component of the MCM complex that acts as a regulator of DNA replication. Binds to the MCM complex during late S phase and promotes the disassembly of the MCM complex from chromatin, thereby acting as a key regulator of pre-replication complex (pre-RC) unloading from replicated DNA. Can dissociate the MCM complex without addition of ATP; probably acts by destabilizing interactions of each individual subunits of the MCM complex. Required for sister chromatid cohesion. [UniProt]
Research Area	Cell Biology and Cellular Response antibody; Gene Regulation antibody
Calculated Mw	73 kDa
Cellular Localization	Nucleus. Note=Associates with chromatin. Highly associated with chromatin in G1/S and S phases, reduced binding to chromatin in G2, and further decreased binding in early M phase. It then reassociates with chromatin in late M phase. Dissociates from chromatin later than component of the MCM complex

Images



ARG55091 anti-MCM-BP antibody IHC-P image

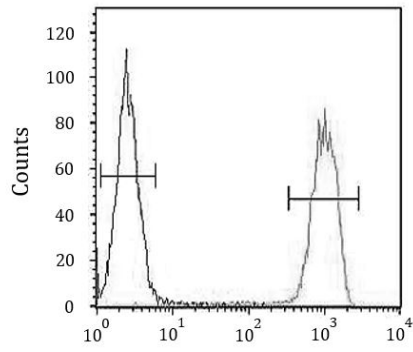
Immunohistochemistry: Formalin-fixed and paraffin-embedded Human cervix carcinoma tissue stained with ARG55091 anti-MCM-BP antibody.



ARG55091 anti-MCM-BP antibody WB image

Western blot: 35 µg of MDA-MB-231 cell lysate stained with ARG55091 anti-MCM-BP antibody.

#### ARG55091 anti-MCM-BP antibody FACS image



Flow Cytometry: MDA-MB231 cells stained with ARG55091 anti-MCM-BP antibody (right histogram) or without primary antibody control (left histogram), followed by incubation with FITC labelled secondary antibody.