

## ARG55103 anti-Hexokinase 2 antibody

Package: 100 µl  
Store at: -20°C

### Summary

Product Description	Mouse Monoclonal antibody recognizes Hexokinase 2
Tested Reactivity	Hu, Mk
Tested Application	WB
Specificity	This antibody detects endogenous levels of Hexokinase II and does not cross-react with related proteins.
Host	Mouse
Clonality	Monoclonal
Isotype	IgG1
Target Name	Hexokinase 2
Species	Human
Immunogen	Purified recombinant Human Hexokinase II protein fragments expressed in E.coli.
Conjugation	Un-conjugated
Alternate Names	Muscle form hexokinase; HK II; Hexokinase-2; Hexokinase type II; EC 2.7.1.1; HXK2; HKII

### Application Instructions

Application table	Application	Dilution
	WB	1:1000
Application Note	* The dilutions indicate recommended starting dilutions and the optimal dilutions or concentrations should be determined by the scientist.	

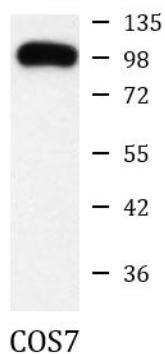
### Properties

Purification	Affinity purification with immunogen.
Buffer	PBS (pH 7.4), 0.03% Proclin 300 and 50% Glycerol
Preservative	0.03% Proclin 300
Stabilizer	50% Glycerol
Concentration	9.050000000000001 mg/ml
Storage instruction	For continuous use, store undiluted antibody at 2-8°C for up to a week. For long-term storage, aliquot and store at -20°C. Storage in frost free freezers is not recommended. Avoid repeated freeze/thaw cycles. Suggest spin the vial prior to opening. The antibody solution should be gently mixed before use.
Note	For laboratory research only, not for drug, diagnostic or other use.

### Bioinformation

Database links	<a href="#">GeneID: 3099 Human</a> <a href="#">Swiss-port # P52789 Human</a>
Gene Symbol	HK2
Gene Full Name	hexokinase 2
Background	Hexokinases phosphorylate glucose to produce glucose-6-phosphate, the first step in most glucose metabolism pathways. This gene encodes hexokinase 2, the predominant form found in skeletal muscle. It localizes to the outer membrane of mitochondria. Expression of this gene is insulin-responsive, and studies in rat suggest that it is involved in the increased rate of glycolysis seen in rapidly growing cancer cells. [provided by RefSeq, Apr 2009]
Research Area	Cancer antibody; Cell Biology and Cellular Response antibody; Metabolism antibody; Signaling Transduction antibody
Calculated Mw	102 kDa
Cellular Localization	Mitochondrion outer membrane.

## Images



ARG55103 anti-Hexokinase 2 antibody WB image

Western blot: COS7 cell lysate stained with ARG55103 anti-Hexokinase 2 antibody at 1:1000 dilution.