

## ARG55130 anti-Aldolase C antibody [859CT9.5.3]

Package: 100 µl  
Store at: -20°C

### Summary

Product Description	Mouse Monoclonal antibody recognizes Aldolase C
Tested Reactivity	Hu, Ms, Rat
Tested Application	WB
Host	Mouse
Clonality	Monoclonal
Clone	859CT9.5.3
Isotype	IgG3
Target Name	Aldolase C
Species	Human
Immunogen	Purified His-tagged Human Aldolase C protein.
Conjugation	Un-conjugated
Alternate Names	EC 4.1.2.13; Brain-type aldolase; Fructose-bisphosphate aldolase C; ALDC

### Application Instructions

Application table	Application	Dilution
	WB	1:1000
Application Note	* The dilutions indicate recommended starting dilutions and the optimal dilutions or concentrations should be determined by the scientist.	
Positive Control	Mouse brain	

### Properties

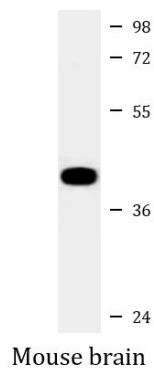
Form	Liquid
Purification	Purification by euglobulin precipitation.
Buffer	PBS and 0.09% (W/V) Sodium azide
Preservative	0.09% (W/V) Sodium azide
Storage instruction	For continuous use, store undiluted antibody at 2-8°C for up to a week. For long-term storage, aliquot and store at -20°C or below. Storage in frost free freezers is not recommended. Avoid repeated freeze/thaw cycles. Suggest spin the vial prior to opening. The antibody solution should be gently mixed before use.
Note	For laboratory research only, not for drug, diagnostic or other use.

### Bioinformation

Gene Symbol	ALDOC
Gene Full Name	aldolase C, fructose-bisphosphate
Background	This gene encodes a member of the class I fructose-biphosphate aldolase gene family. Expressed specifically in the hippocampus and Purkinje cells of the brain, the encoded protein is a glycolytic enzyme that catalyzes the reversible aldol cleavage of fructose-1,6-biphosphate and fructose 1-phosphate to dihydroxyacetone phosphate and either glyceraldehyde-3-phosphate or glyceraldehyde, respectively. [provided by RefSeq, Jul 2008]
Function	D-fructose 1,6-bisphosphate = glycerone phosphate + D-glyceraldehyde 3-phosphate. [UniProt]
Research Area	Cancer antibody; Metabolism antibody; Neuroscience antibody; Signaling Transduction antibody
Calculated Mw	39 kDa

## Images

---



ARG55130 anti-Aldolase C antibody WB image

Western blot: 35 µg of Mouse brain lysate stained with ARG55130 anti-Aldolase C antibody.