

ARG55134 anti-APC5 antibody

Package: 100 µl
Store at: -20°C

Summary

Product Description	Rabbit Polyclonal antibody recognizes APC5
Tested Reactivity	Hu
Tested Application	FACS, WB
Host	Rabbit
Clonality	Polyclonal
Isotype	IgG
Target Name	APC5
Species	Human
Immunogen	KLH-conjugated synthetic peptide corresponding to aa. 156-185 (Center) of Human APC5.
Conjugation	Un-conjugated
Alternate Names	Anaphase-promoting complex subunit 5; Cyclosome subunit 5; APC5

Application Instructions

Application table	Application	Dilution
	FACS	1:10 - 1:50
	WB	1:1000
Application Note	* The dilutions indicate recommended starting dilutions and the optimal dilutions or concentrations should be determined by the scientist.	
Positive Control	A549	

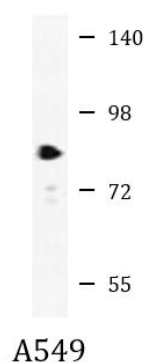
Properties

Form	Liquid
Purification	Purification with Protein A and immunogen peptide.
Buffer	PBS and 0.09% (W/V) Sodium azide
Preservative	0.09% (W/V) Sodium azide
Storage instruction	For continuous use, store undiluted antibody at 2-8°C for up to a week. For long-term storage, aliquot and store at -20°C or below. Storage in frost free freezers is not recommended. Avoid repeated freeze/thaw cycles. Suggest spin the vial prior to opening. The antibody solution should be gently mixed before use.
Note	For laboratory research only, not for drug, diagnostic or other use.

Bioinformation

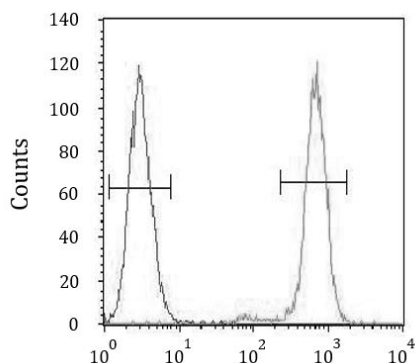
Database links	GeneID: 51433 Human Swiss-port # Q9UJX4 Human
Gene Symbol	ANAPC5
Gene Full Name	anaphase promoting complex subunit 5
Background	<p>This gene encodes a tetratricopeptide repeat-containing component of the anaphase promoting complex/cyclosome (APC/C), a large E3 ubiquitin ligase that controls cell cycle progression by targeting a number of cell cycle regulators such as B-type cyclins for 26S proteasome-mediated degradation through ubiquitination. The encoded protein is required for the proper ubiquitination function of APC/C and for the interaction of APC/C with transcription coactivators. It also interacts with polyA binding protein and represses internal ribosome entry site-mediated translation. Multiple transcript variants encoding different isoforms have been found for this gene. These differences cause translation initiation at a downstream AUG and result in a shorter protein (isoform b), compared to isoform a. [provided by RefSeq, Nov 2008]</p>
Function	<p>Component of the anaphase promoting complex/cyclosome (APC/C), a cell cycle-regulated E3 ubiquitin ligase that controls progression through mitosis and the G1 phase of the cell cycle. The APC/C complex acts by mediating ubiquitination and subsequent degradation of target proteins: it mainly mediates the formation of 'Lys-11'-linked polyubiquitin chains and, to a lower extent, the formation of 'Lys-48'- and 'Lys-63'-linked polyubiquitin chains. [UniProt]</p>
Research Area	Cell Biology and Cellular Response antibody
Calculated Mw	85 kDa

Images



ARG55134 anti-APC5 antibody WB image

Western blot: 35 µg of A549 cell lysate stained with ARG55134 anti-APC5 antibody.



ARG55134 anti-APC5 antibody FACS image

Flow Cytometry: A549 cells stained with ARG55134 anti-APC5 antibody (right histogram) or without primary antibody control (left histogram), followed by incubation with FITC labelled secondary antibody.