

## ARG55147 anti-ACVRL1 antibody

Package: 100 µl  
Store at: -20°C

### Summary

|                     |  |
|---------------------|--|
| Product Description | Rabbit Polyclonal antibody recognizes ACVRL1   |
| Tested Reactivity   | Hu   |
| Predict Reactivity  | Bov  |
| Tested Application  | IHC-P, WB  |
| Host                | Rabbit   |
| Clonality           | Polyclonal   |
| Isotype             | IgG  |
| Target Name         | ACVRL1   |
| Species             | Human  |
| Immunogen           | KLH-conjugated synthetic peptide corresponding to aa. 11-44 (N-terminus) of Human ACVRL1.  |
| Conjugation         | Un-conjugated  |
| Alternate Names     | ACVRLK1; ALK1; ORW2; ALK-1; HHT; EC 2.7.11.30; Serine/threonine-protein kinase receptor R3; TGF-B superfamily receptor type I; HHT2; SKR3; TSR-I; Activin receptor-like kinase 1 |

### Application Instructions

|                   |  |                 |
|-------------------|--|-----------------|
| Application table | Application  | Dilution        |
|                   | IHC-P  | Assay-dependent |
|                   | WB   | 1:1000          |
| Application Note  | * The dilutions indicate recommended starting dilutions and the optimal dilutions or concentrations should be determined by the scientist. |                 |
| Positive Control  | MCF7   |                 |

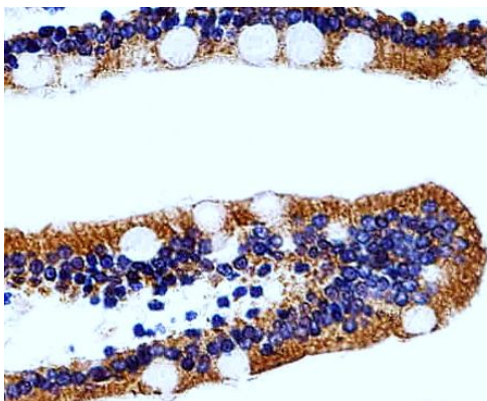
### Properties

|                     |  |
|---------------------|--|
| Form                | Liquid   |
| Purification        | Purification with Protein A and immunogen peptide.   |
| Buffer              | PBS and 0.09% (W/V) Sodium azide   |
| Preservative        | 0.09% (W/V) Sodium azide   |
| Storage instruction | For continuous use, store undiluted antibody at 2-8°C for up to a week. For long-term storage, aliquot and store at -20°C or below. Storage in frost free freezers is not recommended. Avoid repeated freeze/thaw cycles. Suggest spin the vial prior to opening. The antibody solution should be gently mixed before use. |
| Note                | For laboratory research only, not for drug, diagnostic or other use.   |

Bioinformation

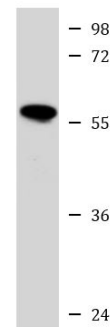
|                       |   |
|-----------------------|---|
| Database links        | <a href="#">GeneID: 94 Human</a><br><a href="#">Swiss-port # P37023 Human</a>   |
| Gene Symbol           | ACVRL1  |
| Gene Full Name        | activin A receptor type II-like 1   |
| Background            | This gene encodes a type I cell-surface receptor for the TGF-beta superfamily of ligands. It shares with other type I receptors a high degree of similarity in serine-threonine kinase subdomains, a glycine- and serine-rich region (called the GS domain) preceding the kinase domain, and a short C-terminal tail. The encoded protein, sometimes termed ALK1, shares similar domain structures with other closely related ALK or activin receptor-like kinase proteins that form a subfamily of receptor serine/threonine kinases. Mutations in this gene are associated with hemorrhagic telangiectasia type 2, also known as Rendu-Osler-Weber syndrome 2. [provided by RefSeq, Jul 2008] |
| Function              | Type I receptor for TGF-beta family ligands BMP9/GDF2 and BMP10 and important regulator of normal blood vessel development. On ligand binding, forms a receptor complex consisting of two type II and two type I transmembrane serine/threonine kinases. Type II receptors phosphorylate and activate type I receptors which autophosphorylate, then bind and activate SMAD transcriptional regulators. May bind activin as well. [UniProt]   |
| Research Area         | Cell Biology and Cellular Response antibody; Metabolism antibody; Signaling Transduction antibody   |
| Calculated Mw         | 56 kDa  |
| Cellular Localization | Membrane; Single-pass type I membrane protein   |

Images



ARG55147 anti-ACVRL1 antibody IHC-P image

Immunohistochemistry: Paraffin-embedded Human small intestine tissue stained with ARG55147 anti-ACVRL1 antibody at 1:25 dilution.



MCF7

ARG55147 anti-ACVRL1 antibody WB image

Western blot: 35 µg of MCF7 cell lysate stained with ARG55147 anti-ACVRL1 antibody at 1:1000 dilution.