

ARG55155 anti-Aldolase C antibody

Package: 100 µl
Store at: -20°C

Summary

Product Description	Rabbit Polyclonal antibody recognizes Aldolase C
Tested Reactivity	Hu
Predict Reactivity	Ms, Rat, Mk
Tested Application	IHC-P, WB
Host	Rabbit
Clonality	Polyclonal
Isotype	IgG
Target Name	Aldolase C
Species	Human
Immunogen	KLH-conjugated synthetic peptide corresponding to aa. 300-333 (C-terminus) of Human Aldolase C.
Conjugation	Un-conjugated
Alternate Names	EC 4.1.2.13; Brain-type aldolase; Fructose-bisphosphate aldolase C; ALDC

Application Instructions

Application table	Application	Dilution
	IHC-P	Assay-dependent
	WB	1:1000
Application Note	* The dilutions indicate recommended starting dilutions and the optimal dilutions or concentrations should be determined by the scientist.	
Positive Control	Human brain	

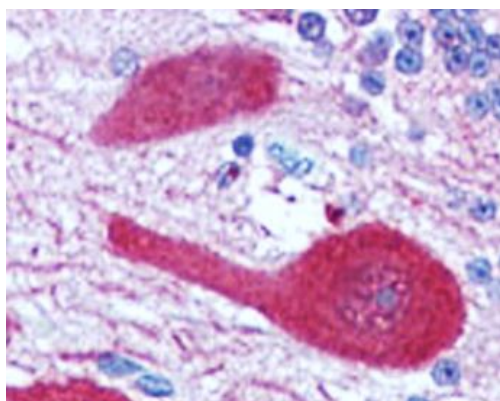
Properties

Form	Liquid
Purification	Saturated Ammonium Sulfate (SAS) precipitation followed by dialysis against PBS.
Buffer	PBS and 0.09% (W/V) Sodium azide
Preservative	0.09% (W/V) Sodium azide
Storage instruction	For continuous use, store undiluted antibody at 2-8°C for up to a week. For long-term storage, aliquot and store at -20°C or below. Storage in frost free freezers is not recommended. Avoid repeated freeze/thaw cycles. Suggest spin the vial prior to opening. The antibody solution should be gently mixed before use.
Note	For laboratory research only, not for drug, diagnostic or other use.

Bioinformation

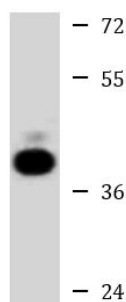
Database links	GeneID: 230 Human Swiss-port # P09972 Human
Gene Symbol	ALDOC
Gene Full Name	aldolase C, fructose-bisphosphate
Background	This gene encodes a member of the class I fructose-biphosphate aldolase gene family. Expressed specifically in the hippocampus and Purkinje cells of the brain, the encoded protein is a glycolytic enzyme that catalyzes the reversible aldol cleavage of fructose-1,6-biphosphate and fructose 1-phosphate to dihydroxyacetone phosphate and either glyceraldehyde-3-phosphate or glyceraldehyde, respectively. [provided by RefSeq, Jul 2008]
Function	D-fructose 1,6-bisphosphate = glyceralone phosphate + D-glyceraldehyde 3-phosphate. [UniProt]
Research Area	Cancer antibody; Metabolism antibody; Neuroscience antibody; Signaling Transduction antibody
Calculated Mw	39 kDa

Images



ARG55155 anti-Aldolase C antibody IHC-P image

Immunohistochemistry: Formalin-fixed and paraffin-embedded Human Brain, Cerebellum tissue stained with ARG55155 anti-Aldolase C antibody.



Human brain

ARG55155 anti-Aldolase C antibody WB image

Western blot: 35 µg of Human brain lysate stained with ARG55155 anti-Aldolase C antibody at 1:1000 dilution.