

## ARG55174 anti-Caspase 1 antibody

Package: 50 µg  
Store at: -20°C

### Summary

Product Description	Rabbit Polyclonal antibody recognizes Caspase 1
Tested Reactivity	Hu
Tested Application	ELISA, ICC/IF, IHC-P, WB
Specificity	Depending on cell lines or tissues used, other cleavage products may be observed.
Host	Rabbit
Clonality	Polyclonal
Isotype	IgG
Target Name	Caspase 1
Species	Human
Immunogen	Synthetic peptide (15 aa) within aa. 200-250 of Human Caspase-1.
Conjugation	Un-conjugated
Alternate Names	Caspase-1; Interleukin-1 beta-converting enzyme; IL-1 beta-converting enzyme; CASP-1; ICE; IL-1BC; Interleukin-1 beta convertase; P45; IL1BC; p45; EC 3.4.22.36

### Application Instructions

Application table	Application	Dilution
	ELISA	Assay-dependent
	ICC/IF	20 µg/ml
	IHC-P	10 µg/ml
	WB	2 µg/ml
Application Note	* The dilutions indicate recommended starting dilutions and the optimal dilutions or concentrations should be determined by the scientist.	
Positive Control	HeLa Cell Lysate	

### Properties

Form	Liquid
Purification	Affinity purification with immunogen.
Buffer	PBS and 0.02% Sodium azide
Preservative	0.02% Sodium azide
Concentration	1 mg/ml
Storage instruction	For continuous use, store undiluted antibody at 2-8°C for up to a week. For long-term storage, aliquot and store at -20°C or below. Storage in frost free freezers is not recommended. Avoid repeated

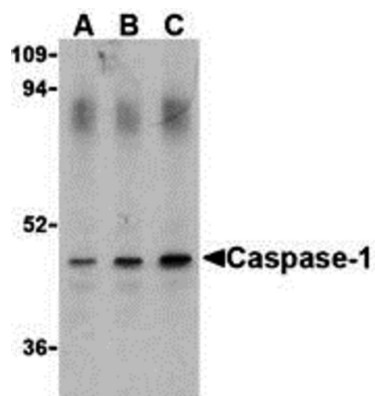
freeze/thaw cycles. Suggest spin the vial prior to opening. The antibody solution should be gently mixed before use.

**Note** For laboratory research only, not for drug, diagnostic or other use.

## Bioinformation

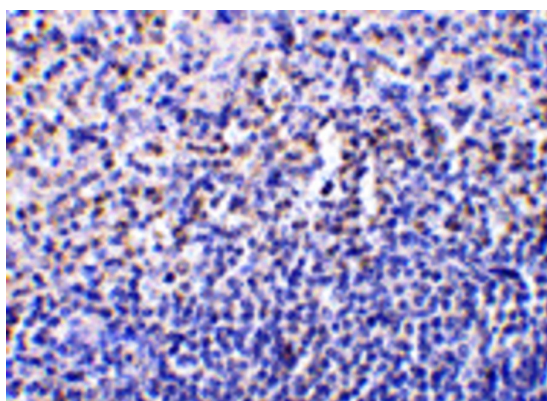
---

Database links	<a href="#">GeneID: 834 Human</a> <a href="#">Swiss-port # P29466 Human</a>
Gene Symbol	CASP1
Gene Full Name	caspase 1, apoptosis-related cysteine peptidase
Background	Caspase 1 is a member of the cysteine-aspartic acid protease (caspase) family. Sequential activation of caspases plays a central role in the execution-phase of cell apoptosis. Caspases exist as inactive proenzymes which undergo proteolytic processing at conserved aspartic residues to produce 2 subunits, large and small, that dimerize to form the active enzyme. This gene was identified by its ability to proteolytically cleave and activate the inactive precursor of interleukin-1, a cytokine involved in the processes such as inflammation, septic shock, and wound healing. This gene has been shown to induce cell apoptosis and may function in various developmental stages. Studies of a similar gene in mouse suggest a role in the pathogenesis of Huntington disease. Alternative splicing results in transcript variants encoding distinct isoforms. [provided by RefSeq, Mar 2012]
Function	Caspase 1: Thiol protease that cleaves IL-1 beta between an Asp and an Ala, releasing the mature cytokine which is involved in a variety of inflammatory processes. Important for defense against pathogens. Cleaves and activates sterol regulatory element binding proteins (SREBPs). Can also promote apoptosis. Upon inflammasome activation, during DNA virus infection but not RNA virus challenge, controls antiviral immunity through the cleavage of CGAS, rendering it inactive (PubMed:28314590). In apoptotic cells, cleaves SPHK2 which is released from cells and remains enzymatically active extracellularly (PubMed:20197547). [UniProt]
Highlight	Related products: <a href="#">Caspase 1 antibodies</a> ; <a href="#">Caspase 1 ELISA Kits</a> ; <a href="#">Caspase 1 Duos / Panels</a> ; <a href="#">Anti-Rabbit IgG secondary antibodies</a> ; Related news: <a href="#">Exploring Antiviral Immune Response</a> <a href="#">RIP1 activation and pathogenesis of NASH</a>
Research Area	Pyroptosis Study antibody; NLRP3 Inflammasome Study antibody; NLRC4 Inflammasome Study antibody
Calculated Mw	45 kDa
PTM	The two subunits are derived from the precursor sequence by an autocatalytic mechanism.



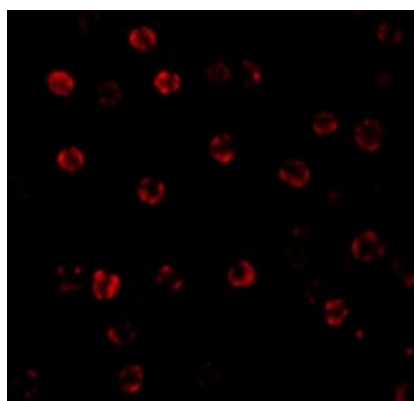
ARG55174 anti-Caspase 1 antibody WB image

Western blot: HeLa cell lysate stained with ARG55174 anti-Caspase 1 antibody at (A) 0.5, (B) 1, and (C) 2 ug/ml dilution.



ARG55174 anti-Caspase 1 antibody IHC image

Immunohistochemistry: caspase-1 in Human spleen tissue stained with ARG55174 anti-Caspase 1 antibody at 10 ug/ml dilution.



ARG55174 anti-Caspase 1 antibody ICC/IF image

Immunofluorescence: HeLa cells stained with ARG55174 anti-Caspase 1 antibody at 20 ug/ml dilution.