

ARG55216 anti-CNTF antibody

Package: 100 µl
Store at: -20°C

Summary

Product Description	Rabbit Polyclonal antibody recognizes CNTF
Tested Reactivity	Hu
Tested Application	WB
Host	Rabbit
Clonality	Polyclonal
Isotype	IgG
Target Name	CNTF
Species	Human
Immunogen	KLH-conjugated synthetic peptide corresponding to aa. 181-216 (C-terminus) of Human CNTF.
Conjugation	Un-conjugated
Alternate Names	HCNTF; CNTF; Ciliary neurotrophic factor

Application Instructions

Application table	Application	Dilution
	WB	1:1000
Application Note	* The dilutions indicate recommended starting dilutions and the optimal dilutions or concentrations should be determined by the scientist.	
Positive Control	Human brain	

Properties

Form	Liquid
Purification	Purification with Protein A and immunogen peptide.
Buffer	PBS and 0.09% (W/V) Sodium azide
Preservative	0.09% (W/V) Sodium azide
Storage instruction	For continuous use, store undiluted antibody at 2-8°C for up to a week. For long-term storage, aliquot and store at -20°C or below. Storage in frost free freezers is not recommended. Avoid repeated freeze/thaw cycles. Suggest spin the vial prior to opening. The antibody solution should be gently mixed before use.
Note	For laboratory research only, not for drug, diagnostic or other use.

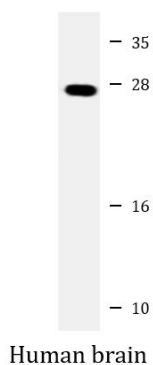
Bioinformation

Database links	GeneID: 1270 Human
----------------	------------------------------------

[Swiss-port # P26441 Human](#)

Gene Symbol	CNTF
Gene Full Name	ciliary neurotrophic factor
Background	CNTF is a survival factor for various neuronal cell types. Seems to prevent the degeneration of motor axons after axotomy.
Research Area	Developmental Biology antibody; Neuroscience antibody
Calculated Mw	23 kDa

Images



ARG55216 anti-CNTF antibody WB image

Western blot: 20 µg of Human brain lysate stained with ARG55216 anti-CNTF antibody at 1:2000 dilution.