

ARG55244 anti-ZO1 antibody

Package: 100 µl
Store at: -20°C

Summary

Product Description	Rabbit Polyclonal antibody recognizes ZO1
Tested Reactivity	Hu
Tested Application	WB
Host	Rabbit
Clonality	Polyclonal
Isotype	IgG
Target Name	ZO1
Species	Human
Immunogen	KLH-conjugated synthetic peptide corresponding to aa. 1328-1362 (C-terminus) of Human ZO1.
Conjugation	Un-conjugated
Alternate Names	Zonula occludens protein 1; Tight junction protein ZO-1; Tight junction protein 1; Zona occludens protein 1; ZO-1

Application Instructions

Application table	<table> <tr> <th>Application</th><th>Dilution</th></tr> <tr> <td>WB</td><td>1:100 - 1:1000</td></tr> </table>	Application	Dilution	WB	1:100 - 1:1000
Application	Dilution				
WB	1:100 - 1:1000				
Application Note	* The dilutions indicate recommended starting dilutions and the optimal dilutions or concentrations should be determined by the scientist.				
Positive Control	A431				

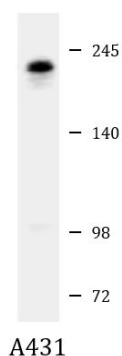
Properties

Form	Liquid
Purification	Purification with Protein A and immunogen peptide.
Buffer	PBS and 0.09% (W/V) Sodium azide
Preservative	0.09% (W/V) Sodium azide
Storage instruction	For continuous use, store undiluted antibody at 2-8°C for up to a week. For long-term storage, aliquot and store at -20°C or below. Storage in frost free freezers is not recommended. Avoid repeated freeze/thaw cycles. Suggest spin the vial prior to opening. The antibody solution should be gently mixed before use.
Note	For laboratory research only, not for drug, diagnostic or other use.

Bioinformation

Database links	GeneID: 7082 Human Swiss-port # Q07157 Human
Gene Symbol	TJP1
Gene Full Name	tight junction protein 1
Background	This gene encodes a protein located on a cytoplasmic membrane surface of intercellular tight junctions. The encoded protein may be involved in signal transduction at cell-cell junctions. Alternative splicing of this gene results in multiple transcript variants. [provided by RefSeq, Jul 2014]
Function	The N-terminal may be involved in transducing a signal required for tight junction assembly, while the C-terminal may have specific properties of tight junctions. The alpha domain might be involved in stabilizing junctions. Plays a role in the regulation of cell migration by targeting CDC42BPB to the leading edge of migrating cells. [UniProt]
Research Area	Controls and Markers antibody
Calculated Mw	195 kDa
PTM	Phosphorylated. Dephosphorylated by PTPRJ.
Cellular Localization	Cell membrane; Peripheral membrane protein; Cytoplasmic side. Cell junction, tight junction. Cell junction Cell junction, gap junction. Note=Moves from the cytoplasm to the cell membrane concurrently with cell-cell contact. Detected at the leading edge of migrating and wounded cells

Images



ARG55244 anti-ZO1 antibody WB image

Western blot: 20 µg of A431 cell lysate stained with ARG55244 anti-ZO1 antibody at 1:1000 dilution.