

ARG55305 anti-CPT1B antibody

Package: 100 µl
Store at: -20°C

Summary

Product Description	Rabbit Polyclonal antibody recognizes CPT1B
Tested Reactivity	Hu, Ms, Rat
Tested Application	ICC/IF, IHC-P, WB
Host	Rabbit
Clonality	Polyclonal
Isotype	IgG
Target Name	CPT1B
Species	Human
Immunogen	Recombinant protein of Human CPT1B
Conjugation	Un-conjugated
Alternate Names	CPT1-M; Carnitine O-palmitoyltransferase 1, muscle isoform; CPT1M; Carnitine palmitoyltransferase I-like protein; CPTI; Carnitine palmitoyltransferase 1B; Carnitine O-palmitoyltransferase I, muscle isoform; MCPT1; CPTI-M; M-CPT1; EC 2.3.1.21; CPT I; MCCPT1

Application Instructions

Application table	Application	Dilution
	ICC/IF	1:50 - 1:200
	IHC-P	1:50 - 1:200
	WB	1:500 - 1:2000
Application Note	* The dilutions indicate recommended starting dilutions and the optimal dilutions or concentrations should be determined by the scientist.	
Positive Control	Mouse heart	

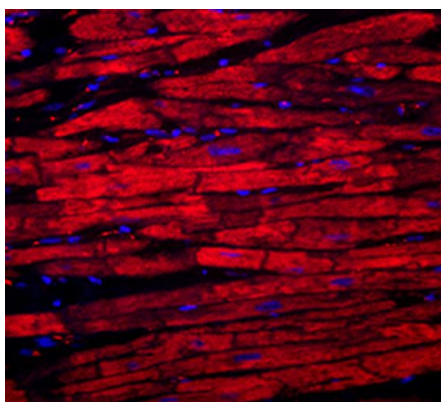
Properties

Form	Liquid
Purification	Affinity purification with immunogen.
Buffer	PBS (pH 7.3), 0.02% Sodium azide and 50% Glycerol
Preservative	0.02% Sodium azide
Stabilizer	50% Glycerol
Storage instruction	For continuous use, store undiluted antibody at 2-8°C for up to a week. For long-term storage, aliquot and store at -20°C. Storage in frost free freezers is not recommended. Avoid repeated freeze/thaw cycles. Suggest spin the vial prior to opening. The antibody solution should be gently mixed before use.

Bioinformation

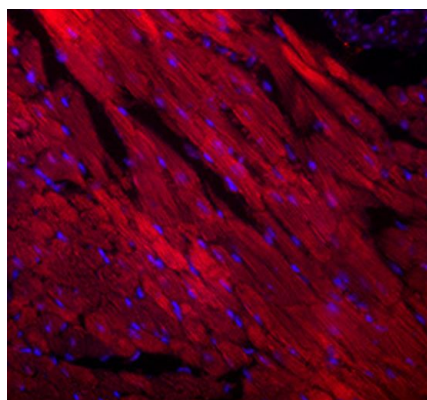
Database links	GeneID: 12895 Mouse GeneID: 1375 Human Swiss-port # Q924X2 Mouse Swiss-port # Q92523 Human
Gene Symbol	CPT1B
Gene Full Name	carnitine palmitoyltransferase 1B (muscle)
Background	The protein encoded by this gene, a member of the carnitine/choline acetyltransferase family, is the rate-controlling enzyme of the long-chain fatty acid beta-oxidation pathway in muscle mitochondria. This enzyme is required for the net transport of long-chain fatty acyl-CoAs from the cytoplasm into the mitochondria. Multiple transcript variants encoding different isoforms have been found for this gene, and read-through transcripts are expressed from the upstream locus that include exons from this gene. [provided by RefSeq, Jun 2009]
Research Area	Cancer antibody; Cell Biology and Cellular Response antibody; Metabolism antibody; Signaling Transduction antibody
Calculated Mw	88 kDa

Images



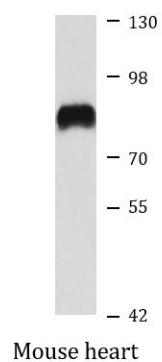
ARG55305 anti-CPT1B antibody ICC/IF image

Immunofluorescence: Human heart stained with ARG55305 anti-CPT1B antibody at 1:100 dilution.



ARG55305 anti-CPT1B antibody ICC/IF image

Immunofluorescence: Mouse heart stained with ARG55305 anti-CPT1B antibody at 1:100 dilution.



ARG55305 anti-CPT1B antibody WB image

Western blot: Mouse heart lysate stained with ARG55305 anti-CPT1B antibody.