

ARG55306 anti-CPT2 antibody

Package: 100 µl
Store at: -20°C

Summary

| | |
|---------------------|--|
| Product Description | Rabbit Polyclonal antibody recognizes CPT2 |
| Tested Reactivity | Hu, Ms, Rat |
| Tested Application | IHC-P, WB |
| Host | Rabbit |
| Clonality | Polyclonal |
| Isotype | IgG |
| Target Name | CPT2 |
| Species | Human |
| Immunogen | Synthetic peptide of Human CPT2 (NP_000089.1) |
| Conjugation | Un-conjugated |
| Alternate Names | CPT1; Carnitine O-palmitoyltransferase 2, mitochondrial; IIAE4; CPT II; CPTASE; EC 2.3.1.21; Carnitine palmitoyltransferase II |

Application Instructions

| | | |
|-------------------|--|----------------|
| Application table | Application | Dilution |
| | IHC-P | 1:50 - 1:200 |
| | WB | 1:500 - 1:2000 |
| Application Note | * The dilutions indicate recommended starting dilutions and the optimal dilutions or concentrations should be determined by the scientist. | |
| Positive Control | Mouse liver | |
| Observed Size | 72 kDa | |

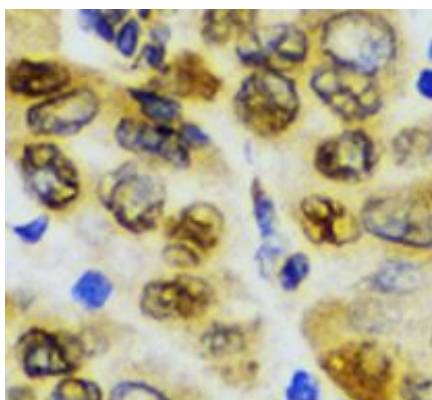
Properties

| | |
|---------------------|---|
| Form | Liquid |
| Purification | Affinity purification with immunogen. |
| Buffer | PBS (pH 7.3), 0.02% Sodium azide and 50% Glycerol |
| Preservative | 0.02% Sodium azide |
| Stabilizer | 50% Glycerol |
| Storage instruction | For continuous use, store undiluted antibody at 2-8°C for up to a week. For long-term storage, aliquot and store at -20°C. Storage in frost free freezers is not recommended. Avoid repeated freeze/thaw cycles. Suggest spin the vial prior to opening. The antibody solution should be gently mixed before use. |
| Note | For laboratory research only, not for drug, diagnostic or other use. |

Bioinformation

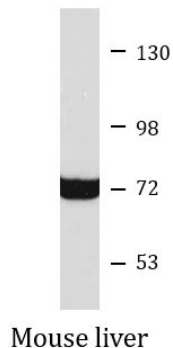
| | |
|----------------|--|
| Gene Symbol | CPT2 |
| Gene Full Name | carnitine palmitoyltransferase 2 |
| Background | The protein encoded by this gene is a nuclear protein which is transported to the mitochondrial inner membrane. Together with carnitine palmitoyltransferase I, the encoded protein oxidizes long-chain fatty acids in the mitochondria. Defects in this gene are associated with mitochondrial long-chain fatty-acid (LCFA) oxidation disorders. [provided by RefSeq, Jul 2008] |
| Research Area | Cancer antibody; Cell Biology and Cellular Response antibody; Controls and Markers antibody; Metabolism antibody; Signaling Transduction antibody |
| Calculated Mw | 74 kDa |

Images



ARG55306 anti-CPT2 antibody IHC-P image

Immunohistochemistry: Paraffin-embedded Human liver cancer stained with ARG55306 anti-CPT2 antibody at 1:100 dilution.



ARG55306 anti-CPT2 antibody WB image

Western blot: Mouse liver lysate stained with ARG55306 anti-CPT2 antibody.