

## ARG55349 anti-SEPT2 antibody

Package: 100 µl  
Store at: -20°C

### Summary

Product Description	Rabbit Polyclonal antibody recognizes 2-Sep
Tested Reactivity	Hu, Ms
Tested Application	ICC/IF, WB
Host	Rabbit
Clonality	Polyclonal
Isotype	IgG
Target Name	SEPT2
Species	Human
Immunogen	Recombinant protein of Human SEPT2
Conjugation	Un-conjugated
Alternate Names	Pnutl3; NEDD-5; Septin-2; NEDD5; hNedd5; Neural precursor cell expressed developmentally down-regulated protein 5; DIFF6

### Application Instructions

Application table	Application	Dilution
	ICC/IF	1:50 - 1:200
	WB	1:500 - 1:2000
Application Note	* The dilutions indicate recommended starting dilutions and the optimal dilutions or concentrations should be determined by the scientist.	
Positive Control	MCF7	
Observed Size	~ 41 kDa	

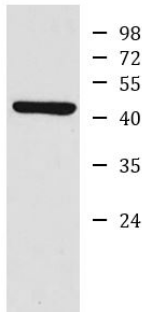
### Properties

Form	Liquid
Purification	Affinity purification with immunogen.
Buffer	PBS (pH 7.3), 0.02% Sodium azide and 50% Glycerol
Preservative	0.02% Sodium azide
Stabilizer	50% Glycerol
Storage instruction	For continuous use, store undiluted antibody at 2-8°C for up to a week. For long-term storage, aliquot and store at -20°C. Storage in frost free freezers is not recommended. Avoid repeated freeze/thaw cycles. Suggest spin the vial prior to opening. The antibody solution should be gently mixed before use.
Note	For laboratory research only, not for drug, diagnostic or other use.

Bioinformation

Database links	<a href="#">GeneID: 18000 Mouse</a> <a href="#">GeneID: 4735 Human</a> <a href="#">Swiss-port # P42208 Mouse</a> <a href="#">Swiss-port # Q15019 Human</a>
Gene Symbol	42249
Gene Full Name	septin 2
Function	Filament-forming cytoskeletal GTPase. Required for normal organization of the actin cytoskeleton. Plays a role in the biogenesis of polarized columnar-shaped epithelium by maintaining polyglutamylated microtubules, thus facilitating efficient vesicle transport, and by impeding MAP4 binding to tubulin. Required for the progression through mitosis. Forms a scaffold at the midplane of the mitotic spindle required to maintain CENPE localization at kinetochores and consequently chromosome congression. During anaphase, may be required for chromosome segregation and spindle elongation. Plays a role in ciliogenesis and collective cell movements. In cilia, required for the integrity of the diffusion barrier at the base of the primary cilium that prevents diffusion of transmembrane proteins between the cilia and plasma membranes: probably acts by regulating the assembly of the tectonic-like complex (also named B9 complex) by localizing TMEM231 protein. May play a role in the internalization of 2 intracellular microbial pathogens, Listeria monocytogenes and Shigella flexneri. [UniProt]
Research Area	Cell Biology and Cellular Response antibody
Calculated Mw	41 kDa

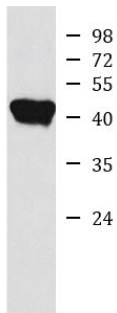
Images



MCF7

ARG55349 anti-SEPT2 antibody WB image

Western blot: MCF7 cell lysate stained with ARG55349 anti-SEPT2 antibody.



Mouse ovary

ARG55349 anti-SEPT2 antibody WB image

Western blot: Mouse ovary lysate stained with ARG55349 anti-SEPT2 antibody.