

## ARG55354 anti-ALDH1A1 antibody

Package: 100 µl  
Store at: -20°C

### Summary

|                     |   |
|---------------------|---|
| Product Description | Rabbit Polyclonal antibody recognizes ALDH1A1   |
| Tested Reactivity   | Hu, Rat   |
| Tested Application  | ICC/IF, WB  |
| Host                | Rabbit  |
| Clonality           | Polyclonal  |
| Isotype             | IgG   |
| Target Name         | ALDH1A1   |
| Species             | Human   |
| Immunogen           | KLH-conjugated synthetic peptide corresponding to aa. 306-339 (Center) of Human ALDH1A1.  |
| Conjugation         | Un-conjugated   |
| Alternate Names     | HEL-S-53e; RalDH1; Aldehyde dehydrogenase family 1 member A1; Retinal dehydrogenase 1; HEL-9; RALDH 1; ALDH1; Aldehyde dehydrogenase, cytosolic; ALDH11; EC 1.2.1.36; RALDH1; HEL12; PUMB1; ALHDII; ALDC; ALDH-E1 |

### Application Instructions

| Application table | Application  | Dilution |
|-------------------|--|----------|
|                   | ICC/IF   | 1:25     |
|                   | WB   | 1:1000   |
| Application Note  | * The dilutions indicate recommended starting dilutions and the optimal dilutions or concentrations should be determined by the scientist. |          |
| Positive Control  | A549   |          |

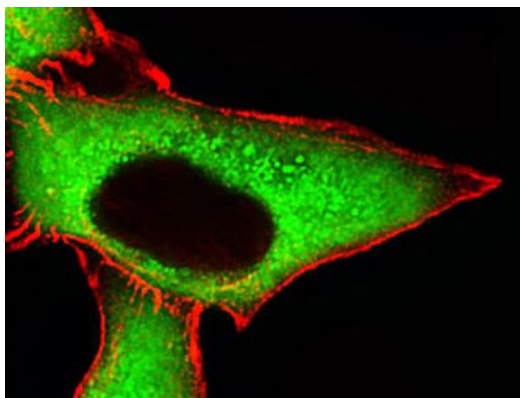
### Properties

|                     |  |
|---------------------|--|
| Form                | Liquid   |
| Purification        | Purification with Protein A and immunogen peptide.   |
| Buffer              | PBS and 0.09% (W/V) Sodium azide   |
| Preservative        | 0.09% (W/V) Sodium azide   |
| Storage instruction | For continuous use, store undiluted antibody at 2-8°C for up to a week. For long-term storage, aliquot and store at -20°C or below. Storage in frost free freezers is not recommended. Avoid repeated freeze/thaw cycles. Suggest spin the vial prior to opening. The antibody solution should be gently mixed before use. |
| Note                | For laboratory research only, not for drug, diagnostic or other use.   |

## Bioinformation

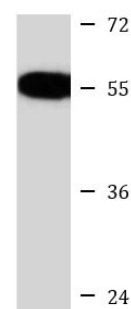
|                       |  |
|-----------------------|--|
| Database links        | <a href="#">GeneID: 216 Human</a><br><a href="#">GeneID: 24188 Rat</a><br><a href="#">Swiss-port # P00352 Human</a><br><a href="#">Swiss-port # P51647 Rat</a>   |
| Gene Symbol           | ALDH1A1  |
| Gene Full Name        | aldehyde dehydrogenase 1 family, member A1   |
| Background            | The protein encoded by this gene belongs to the aldehyde dehydrogenase family. Aldehyde dehydrogenase is the next enzyme after alcohol dehydrogenase in the major pathway of alcohol metabolism. There are two major aldehyde dehydrogenase isozymes in the liver, cytosolic and mitochondrial, which are encoded by distinct genes, and can be distinguished by their electrophoretic mobility, kinetic properties, and subcellular localization. This gene encodes the cytosolic isozyme. Studies in mice show that through its role in retinol metabolism, this gene may also be involved in the regulation of the metabolic responses to high-fat diet. [provided by RefSeq, Mar 2011] |
| Function              | Binds free retinal and cellular retinol-binding protein-bound retinal. Can convert/oxidize retinaldehyde to retinoic acid (By similarity). [UniProt]   |
| Research Area         | Cancer antibody; Developmental Biology antibody; Neuroscience antibody   |
| Calculated Mw         | 55 kDa   |
| PTM                   | The N-terminus is blocked most probably by acetylation.  |
| Cellular Localization | Cytoplasm.   |

## Images



ARG55354 anti-ALDH1A1 antibody ICC/IF image

Immunofluorescence: A549 cells stained with ARG55354 anti-ALDH1A1 antibody (green) at 1:25 dilution. Cytoplasmic actin was counterstained with Alexa Fluor® 555 conjugated with Phalloidin (red).



A549

ARG55354 anti-ALDH1A1 antibody WB image

Western blot: 35 µg of A549 cell lysate stained with ARG55354 anti-ALDH1A1 antibody at 1:1000 dilution.