

ARG55358 anti-Annexin A2 antibody

Package: 100 µl
Store at: -20°C

Summary

Product Description	Rabbit Polyclonal antibody recognizes Annexin A2
Tested Reactivity	Hu, Ms
Predict Reactivity	Bov, Rat, Pig
Tested Application	IHC-P, WB
Host	Rabbit
Clonality	Polyclonal
Isotype	IgG
Target Name	Annexin A2
Species	Human
Immunogen	KLH-conjugated synthetic peptide corresponding to aa. 19-49 (N-terminus) of Human Annexin A2.
Conjugation	Un-conjugated
Alternate Names	Placental anticoagulant protein IV; LPC2; Protein I; Calpactin-1 heavy chain; Calpactin I heavy chain; p36; CAL1H; ANX2; LPC2D; Lipocortin II; ANX2L4; HEL-S-270; LIP2; Annexin II; Annexin A2; Annexin-2; P36; Chromobindin-8; PAP-IV

Application Instructions

Application table	Application	Dilution
	IHC-P	Assay-dependent
	WB	1:1000
Application Note	* The dilutions indicate recommended starting dilutions and the optimal dilutions or concentrations should be determined by the scientist.	
Positive Control	HeLa	

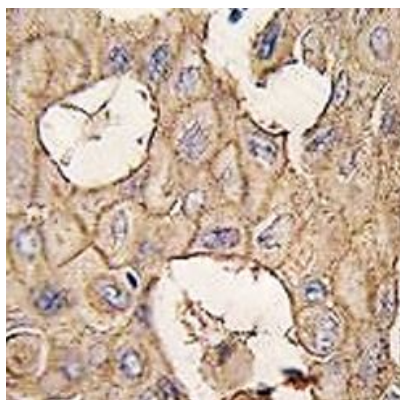
Properties

Form	Liquid
Purification	This antibody is prepared by Saturated Ammonium Sulfate (SAS) precipitation followed by dialysis against PBS.
Buffer	PBS and 0.09% (W/V) Sodium azide
Preservative	0.09% (W/V) Sodium azide
Storage instruction	For continuous use, store undiluted antibody at 2-8°C for up to a week. For long-term storage, aliquot and store at -20°C or below. Storage in frost free freezers is not recommended. Avoid repeated freeze/thaw cycles. Suggest spin the vial prior to opening. The antibody solution should be gently mixed before use.

Bioinformation

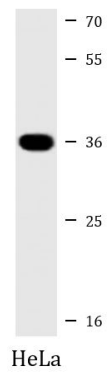
Database links	GeneID: 12306 Mouse GeneID: 302 Human Swiss-port # P07355 Human Swiss-port # P07356 Mouse
Gene Symbol	ANXA2
Gene Full Name	annexin A2
Background	This gene encodes a member of the annexin family. Members of this calcium-dependent phospholipid-binding protein family play a role in the regulation of cellular growth and in signal transduction pathways. This protein functions as an autocrine factor which heightens osteoclast formation and bone resorption. This gene has three pseudogenes located on chromosomes 4, 9 and 10, respectively. Multiple alternatively spliced transcript variants encoding different isoforms have been found for this gene. [provided by RefSeq, Jul 2008]
Function	Calcium-regulated membrane-binding protein whose affinity for calcium is greatly enhanced by anionic phospholipids. It binds two calcium ions with high affinity. May be involved in heat-stress response. Inhibits PCSK9-enhanced LDLR degradation, probably reduces PCSK9 protein levels via a translational mechanism but also competes with LDLR for binding with PCSK9. [UniProt]
Research Area	Signaling Transduction antibody
Calculated Mw	39 kDa
PTM	Phosphorylation of Tyr-24 enhances heat stress-induced translocation to the cell surface. ISGylated.

Images



ARG55358 anti-Annexin A2 antibody IHC-P image

Immunohistochemistry: Formalin-fixed and paraffin-embedded Human lung carcinoma tissue stained with ARG55358 anti-Annexin A2 antibody.



ARG55358 anti-Annexin A2 antibody WB image

Western blot: 20 µg of HeLa whole cell lysate stained with ARG55358 anti-Annexin A2 antibody at 1:2000 dilution.