

ARG55369 anti-PDIA3 / ERp57 antibody

Package: 100 µl
Store at: -20°C

Summary

| | |
|---------------------|---|
| Product Description | Rabbit Polyclonal antibody recognizes PDIA3 / ERp57 |
| Tested Reactivity | Hu |
| Tested Application | FACS, IHC-P, WB |
| Host | Rabbit |
| Clonality | Polyclonal |
| Isotype | IgG |
| Target Name | PDIA3 / ERp57 |
| Species | Human |
| Immunogen | KLH-conjugated synthetic peptide corresponding to aa. 446-475 (C-terminus) of Human PDIA3. |
| Conjugation | Un-conjugated |
| Alternate Names | EC 5.3.4.1; Disulfide isomerase ER-60; HEL-S-93n; GRP57; p58; Endoplasmic reticulum resident protein 60; ER protein 57; ER protein 60; ERp57; GRP58; P58; 58 kDa glucose-regulated protein; 58 kDa microsomal protein; ER60; HEL-S-269; Protein disulfide-isomerase A3; PI-PLC; ERp60; ERp61; HsT17083; Endoplasmic reticulum resident protein 57 |

Application Instructions

| Application table | Application | Dilution |
|-------------------|--|--------------|
| | FACS | 1:10 - 1:50 |
| | IHC-P | 1:50 - 1:100 |
| | WB | 1:1000 |
| Application Note | * The dilutions indicate recommended starting dilutions and the optimal dilutions or concentrations should be determined by the scientist. | |
| Positive Control | A2058 | |

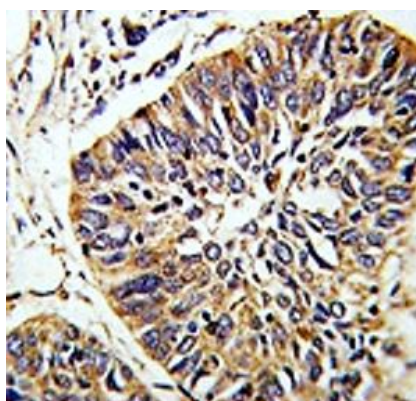
Properties

| | |
|---------------------|--|
| Form | Liquid |
| Purification | This antibody is prepared by Saturated Ammonium Sulfate (SAS) precipitation followed by dialysis against PBS. |
| Buffer | PBS and 0.09% (W/V) Sodium azide |
| Preservative | 0.09% (W/V) Sodium azide |
| Storage instruction | For continuous use, store undiluted antibody at 2-8°C for up to a week. For long-term storage, aliquot and store at -20°C or below. Storage in frost free freezers is not recommended. Avoid repeated freeze/thaw cycles. Suggest spin the vial prior to opening. The antibody solution should be gently mixed before use. |

Bioinformation

| | |
|-----------------------|--|
| Database links | GeneID: 2923 Human Swiss-port # P30101 Human |
| Gene Symbol | PDIA3 |
| Gene Full Name | protein disulfide isomerase family A, member 3 |
| Background | This gene encodes a protein of the endoplasmic reticulum that interacts with lectin chaperones calreticulin and calnexin to modulate folding of newly synthesized glycoproteins. The protein was once thought to be a phospholipase; however, it has been demonstrated that the protein actually has protein disulfide isomerase activity. It is thought that complexes of lectins and this protein mediate protein folding by promoting formation of disulfide bonds in their glycoprotein substrates. [provided by RefSeq, Jul 2008] |
| Research Area | Signaling Transduction antibody |
| Calculated Mw | 57 kDa |
| Cellular Localization | Endoplasmic reticulum. Endoplasmic reticulum lumen. Melanosome. Note=Identified by mass spectrometry in melanosome fractions from stage I to stage IV |

Images



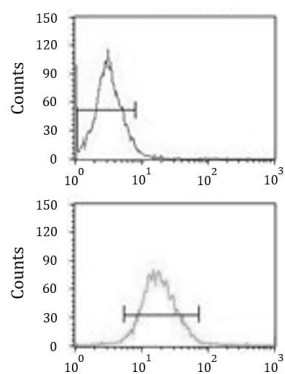
ARG55369 anti-PDIA3 / ERp57 antibody IHC-P image

Immunohistochemistry: Formalin-fixed and paraffin-embedded Human lung carcinoma stained with ARG55369 anti-PDIA3 / ERp57 antibody.



ARG55369 anti-PDIA3 / ERp57 antibody WB image

Western blot: 35 µg of A2058 cell lysate stained with ARG55369 anti-PDIA3 / ERp57 antibody.



ARG55369 anti-PDIA3 / ERp57 antibody FACS image

Flow Cytometry: NCI-H292 cells stained with ARG55369 anti-PDIA3 / ERp57 antibody (bottom histogram) or without primary antibody control (top histogram), followed by incubation with FITC labelled secondary antibody.