

ARG55372 anti-GST3 / GST pi antibody

Package: 100 µl
Store at: -20°C

Summary

Product Description	Rabbit Polyclonal antibody recognizes GST3 / GST pi
Tested Reactivity	Hu, Ms
Tested Application	FACS, ICC/IF, IHC-P, WB
Host	Rabbit
Clonality	Polyclonal
Isotype	IgG
Target Name	GST3 / GST pi
Species	Human
Immunogen	KLH-conjugated synthetic peptide corresponding to aa. 97-126 (Center) of Human GST3 / GST pi.
Conjugation	Un-conjugated
Alternate Names	DFN7; EC 2.5.1.18; GST3; GSTP; GSTP1-1; HEL-S-22; FAEES3; GST class-pi; PI; Glutathione S-transferase P

Application Instructions

Application table	Application	Dilution
	FACS	1:10 - 1:50
	ICC/IF	1:10 - 1:50
	IHC-P	1:50 - 1:100
	WB	1:1000
Application Note	* The dilutions indicate recommended starting dilutions and the optimal dilutions or concentrations should be determined by the scientist.	
Positive Control	K562	

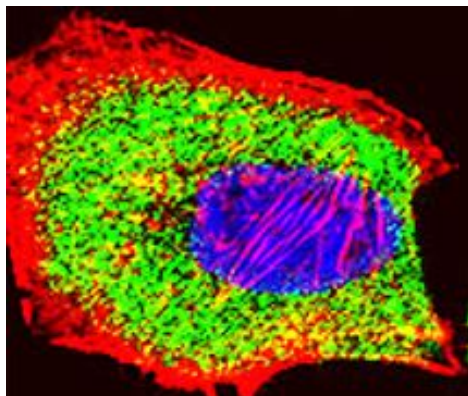
Properties

Form	Liquid
Purification	Purification with Protein A and immunogen peptide.
Buffer	PBS and 0.09% (W/V) Sodium azide
Preservative	0.09% (W/V) Sodium azide
Storage instruction	For continuous use, store undiluted antibody at 2-8°C for up to a week. For long-term storage, aliquot and store at -20°C or below. Storage in frost free freezers is not recommended. Avoid repeated freeze/thaw cycles. Suggest spin the vial prior to opening. The antibody solution should be gently mixed before use.
Note	For laboratory research only, not for drug, diagnostic or other use.

Bioinformation

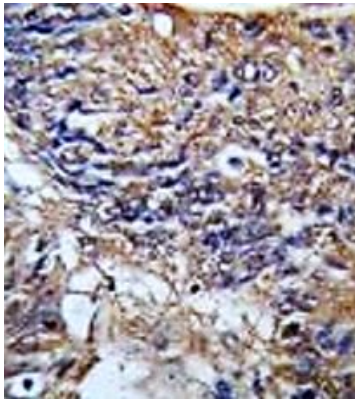
Database links	GeneID: 14870 Mouse GeneID: 2950 Human Swiss-port # P09211 Human Swiss-port # P19157 Mouse
Gene Symbol	GSTP1
Gene Full Name	glutathione S-transferase pi 1
Background	Glutathione S-transferases (GSTs) are a family of enzymes that play an important role in detoxification by catalyzing the conjugation of many hydrophobic and electrophilic compounds with reduced glutathione. Based on their biochemical, immunologic, and structural properties, the soluble GSTs are categorized into 4 main classes: alpha, mu, pi, and theta. This GST family member is a polymorphic gene encoding active, functionally different GSTP1 variant proteins that are thought to function in xenobiotic metabolism and play a role in susceptibility to cancer, and other diseases. [provided by RefSeq, Jul 2008]
Function	Conjugation of reduced glutathione to a wide number of exogenous and endogenous hydrophobic electrophiles. Regulates negatively CDK5 activity via p25/p35 translocation to prevent neurodegeneration. [UniProt]
Research Area	Cell Biology and Cellular Response antibody; Metabolism antibody; Neuroscience antibody; Signaling Transduction antibody
Calculated Mw	23 kDa
Cellular Localization	Cytoplasm. Mitochondrion. Nucleus. Note=The 83 N-terminal amino acids function as an uncleaved transit peptide, and arginine residues within it are crucial for mitochondrial localization

Images



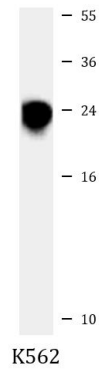
ARG55372 anti-GST3 / GST pi antibody ICC/IF image

Immunofluorescence: A549 cells were fixed with 4% PFA (20 min), permeabilized with Triton X-100 (0.1%, 10 min), then stained with ARG55372 anti-GST3 / GST pi antibody (green) at 1:25 dilution, 1 hour at 37°C. Cytoplasmic actin was counterstained with Alexa Fluor® 555 (red) conjugated Phalloidin (7 units/ml, 1 hour at 37°C). DAPI (blue) for nuclear staining.



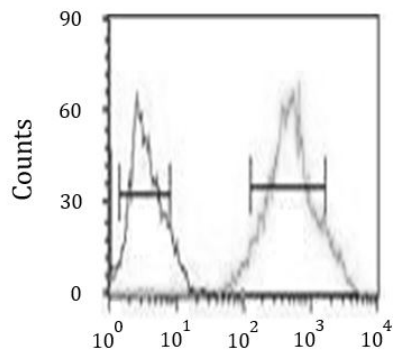
ARG55372 anti-GST3 / GST pi antibody IHC-P image

Immunohistochemistry: Formalin-fixed and paraffin-embedded Human colon carcinoma stained with ARG55372 anti-GST3 / GST pi antibody.



ARG55372 anti-GST3 / GST pi antibody WB image

Western blot: 35 µg of K562 cell lysate stained with ARG55372 anti-GST3 / GST pi antibody.



ARG55372 anti-GST3 / GST pi antibody FACS image

Flow Cytometry: Ramos cells stained with ARG55372 anti-GST3 / GST pi antibody (right histogram) or without primary antibody control (left histogram), followed by incubation with FITC labelled secondary antibody.