

ARG55401 anti-CD34 antibody [581] (PE)

Package: 100 tests
Store at: 4°C

Summary

| | |
|---------------------|---|
| Product Description | PE-conjugated Mouse Monoclonal antibody [581] recognizes CD34 |
| Tested Reactivity | Hu, NHuPrm |
| Tested Application | FACS |
| Host | Mouse |
| Clonality | Monoclonal |
| Clone | 581 |
| Isotype | IgG1 |
| Target Name | CD34 |
| Species | Human |
| Immunogen | Human CD34 protein |
| Conjugation | PE |
| Alternate Names | Hematopoietic progenitor cell antigen CD34; CD antigen CD34 |

Application Instructions

| Application table | Application | Dilution |
|-------------------|--|-------------------------------|
| | FACS | 20 µl / 10 ⁶ cells |
| Application Note | * The dilutions indicate recommended starting dilutions and the optimal dilutions or concentrations should be determined by the scientist. | |

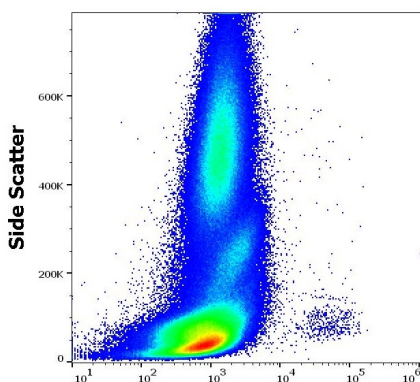
Properties

| | |
|---------------------|--|
| Form | Liquid |
| Purification | Affinity purification with immunogen. |
| Buffer | PBS, 15 mM Sodium azide and 0.2% (w/v) high-grade protease free BSA |
| Preservative | 15 mM Sodium azide |
| Stabilizer | 0.2% (w/v) high-grade protease free BSA |
| Storage instruction | Aliquot and store in the dark at 2-8°C. Keep protected from prolonged exposure to light. Avoid repeated freeze/thaw cycles. Suggest spin the vial prior to opening. The antibody solution should be gently mixed before use. |
| Note | For laboratory research only, not for drug, diagnostic or other use. |

Bioinformation

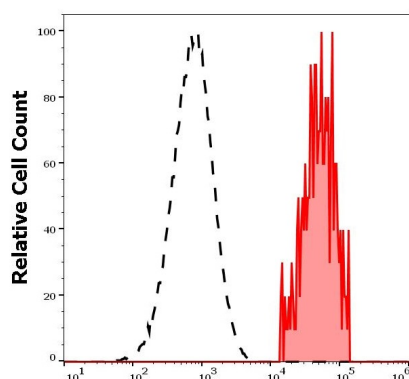
| | |
|----------------|---|
| Database links | GeneID: 947 Human Swiss-port # P28906 Human |
| Gene Symbol | CD34 |
| Gene Full Name | CD34 molecule |
| Background | CD34 protein may play a role in the attachment of stem cells to the bone marrow extracellular matrix or to stromal cells. This single-pass membrane protein is highly glycosylated and phosphorylated by protein kinase C. Two transcript variants encoding different isoforms have been found for this gene. [provided by RefSeq, Aug 2011] |
| Function | CD34 is a possible adhesion molecule with a role in early hematopoiesis by mediating the attachment of stem cells to the bone marrow extracellular matrix or directly to stromal cells. Could act as a scaffold for the attachment of lineage specific glycans, allowing stem cells to bind to lectins expressed by stromal cells or other marrow components. Presents carbohydrate ligands to selectins. [UniProt] |
| Highlight | Related products: CD34 antibodies ; CD34 Duos / Panels ; Anti-Mouse IgG secondary antibodies ; Related news: Stem cell and the regenerative medicine: Ready for the patients |
| Research Area | Cancer antibody; Cell Biology and Cellular Response antibody; Controls and Markers antibody; Developmental Biology antibody; Immune System antibody; Neuroscience antibody; Pro-B Cell Marker antibody; Endothelial Cell Marker antibody; Angiogenesis Study antibody |
| Calculated Mw | 41 kDa |
| PTM | Highly glycosylated. Phosphorylated on serine residues by PKC. |

Images



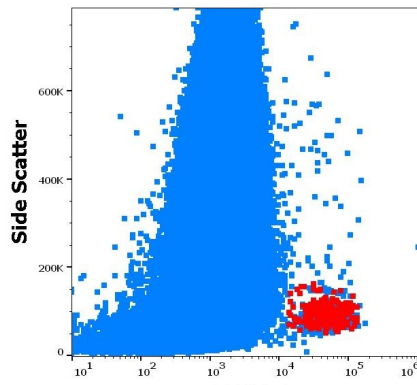
ARG55401 anti-CD34 antibody [581] (PE) FACS image

Flow Cytometry: Human peripheral whole blood stained with ARG55401 anti-CD34 antibody [581] (PE) (20 µl reagent / 100 µl of peripheral whole blood).



ARG55401 anti-CD34 antibody [581] (PE) FACS image

Flow Cytometry: Separation of human CD34 positive stem cells (red-filled) from lymphocytes (black-dashed). Human peripheral whole blood stained with ARG55401 anti-CD34 antibody [581] (PE) (20 µl reagent / 100 µl of peripheral whole blood).



ARG55401 anti-CD34 antibody [581] (PE) FACS image

Flow Cytometry: Human peripheral whole blood showing CD34 positive stem cells (red). Cells were stained with ARG55401 anti-CD34 antibody [581] (PE) (20 µl reagent / 100 µl of peripheral whole blood).