

ARG55418 anti-CD272 / BTLA antibody

Package: 50 µg
Store at: -20°C

Summary

Product Description	Rabbit Polyclonal antibody recognizes CD272 / BTLA
Tested Reactivity	Hu
Tested Application	IHC-P, WB
Specificity	BTLA antibody is human specific. At least two isoforms of BTLA are known to exist.
Host	Rabbit
Clonality	Polyclonal
Isotype	IgG
Target Name	CD272 / BTLA
Species	Human
Immunogen	Synthetic peptide (17 aa) within aa. 170-220 of Human BTLA.
Conjugation	Un-conjugated
Alternate Names	CD antigen CD272; BTLA1; B- and T-lymphocyte-associated protein; B- and T-lymphocyte attenuator; CD272

Application Instructions

Application table	Application	Dilution
	IHC-P	2.5 µg/ml
	WB	1 - 2 µg/ml
Application Note	* The dilutions indicate recommended starting dilutions and the optimal dilutions or concentrations should be determined by the scientist.	
Positive Control	Cat. No. 1205- Jurkat Cell Lysate	

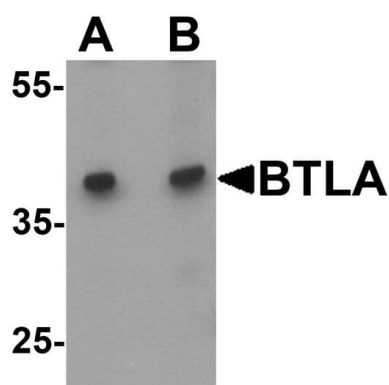
Properties

Form	Liquid
Purification	Affinity purification with immunogen.
Buffer	PBS and 0.02% Sodium azide
Preservative	0.02% Sodium azide
Concentration	1 mg/ml
Storage instruction	For continuous use, store undiluted antibody at 2-8°C for up to a week. For long-term storage, aliquot and store at -20°C or below. Storage in frost free freezers is not recommended. Avoid repeated freeze/thaw cycles. Suggest spin the vial prior to opening. The antibody solution should be gently mixed before use.

Bioinformation

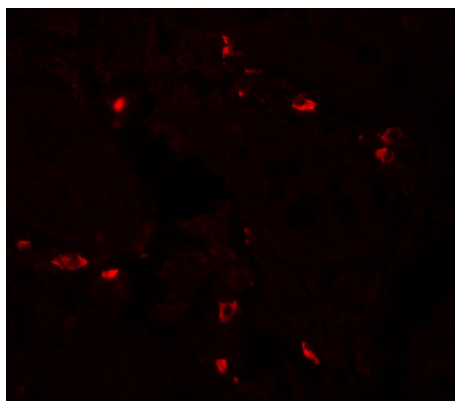
Database links	GeneID: 151888 Human Swiss-port # Q7Z6A9 Human
Gene Symbol	BTLA
Gene Full Name	B and T lymphocyte associated
Background	This gene encodes a member of the immunoglobulin superfamily. The encoded protein contains a single immunoglobulin (Ig) domain and is a receptor that relays inhibitory signals to suppress the immune response. Alternative splicing results in multiple transcript variants. Polymorphisms in this gene have been associated with an increased risk of rheumatoid arthritis. [provided by RefSeq, Aug 2011]
Function	Lymphocyte inhibitory receptor which inhibits lymphocytes during immune response. [UniProt]
Research Area	Immune System antibody
Calculated Mw	33 kDa
PTM	Phosphorylated on Tyr residues by TNFRSF14 and by antigen receptors cross-linking, both inducing association with PTPN6 and PTPN11. N-glycosylated.

Images



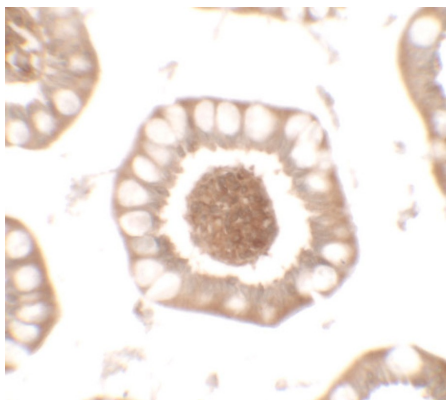
ARG55418 anti-CD272 / BTLA antibody WB image

Western blot: Jurkat cell lysate at (A) 1 and (B) 2 µg/ml stained with ARG55418 anti-CD272 / BTLA antibody at (A) 1 and (B) 2 µg/ml dilution.



ARG55418 anti-CD272 / BTLA antibody IHC image

Immunohistochemistry: Human small intestine tissue stained with ARG55418 anti-CD272 / BTLA antibody at 20 µg/ml dilution.



ARG55418 anti-CD272 / BTLA antibody IHC image

Immunohistochemistry: Human small intestine tissue stained with ARG55418 anti-CD272 / BTLA antibody at 2.5 µg/ml dilution.