

ARG55429 anti-STUB1 / CHIP antibody

Package: 100 µl
Store at: -20°C

Summary

| | |
|---------------------|--|
| Product Description | Rabbit Polyclonal antibody recognizes STUB1 / CHIP |
| Tested Reactivity | Hu |
| Predict Reactivity | Ms, Chk |
| Tested Application | FACS, WB |
| Host | Rabbit |
| Clonality | Polyclonal |
| Isotype | IgG |
| Target Name | STUB1 / CHIP |
| Species | Human |
| Immunogen | KLH-conjugated synthetic peptide corresponding to aa. 236-263 (C-terminus) of Human STUB1. |
| Conjugation | Un-conjugated |
| Alternate Names | NY-CO-7; Antigen NY-CO-7; UBOX1; EC 6.3.2.-; E3 ubiquitin-protein ligase CHIP; SDCCAG7; CHIP; STIP1 homology and U box-containing protein 1; HSPABP2; SCAR16; Carboxy terminus of Hsp70-interacting protein; CLL-associated antigen KW-8 |

Application Instructions

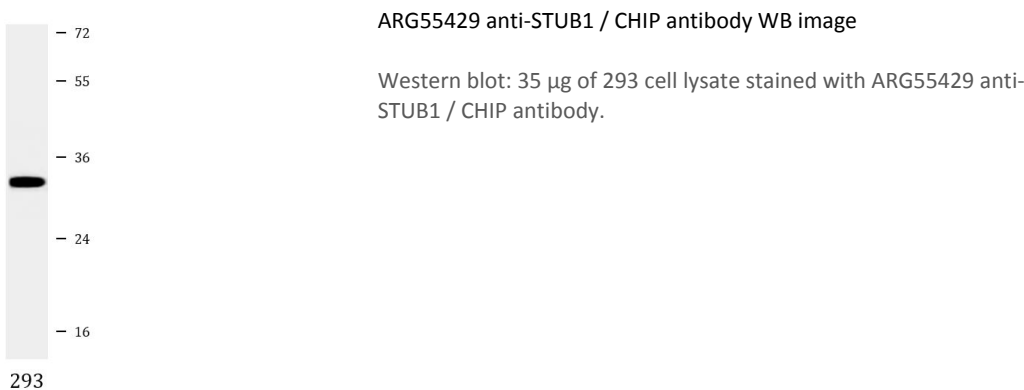
| | | |
|-------------------|--|-------------|
| Application table | Application | Dilution |
| | FACS | 1:10 - 1:50 |
| | WB | 1:1000 |
| Application Note | * The dilutions indicate recommended starting dilutions and the optimal dilutions or concentrations should be determined by the scientist. | |
| Positive Control | 293 | |

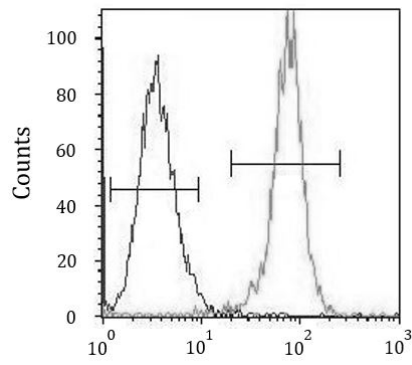
Properties

| | |
|---------------------|--|
| Form | Liquid |
| Purification | Purification with Protein A and immunogen peptide. |
| Buffer | PBS and 0.09% (W/V) Sodium azide |
| Preservative | 0.09% (W/V) Sodium azide |
| Storage instruction | For continuous use, store undiluted antibody at 2-8°C for up to a week. For long-term storage, aliquot and store at -20°C or below. Storage in frost free freezers is not recommended. Avoid repeated freeze/thaw cycles. Suggest spin the vial prior to opening. The antibody solution should be gently mixed before use. |
| Note | For laboratory research only, not for drug, diagnostic or other use. |

| | |
|-----------------------|---|
| Database links | GeneID: 10273 Human Swiss-port # Q9UNE7 Human |
| Gene Symbol | STUB1 |
| Gene Full Name | STIP1 homology and U-box containing protein 1, E3 ubiquitin protein ligase |
| Background | This gene encodes a protein containing tetratricopeptide repeat and a U-box that functions as a ubiquitin ligase/cochaperone. The encoded protein binds to and ubiquitinates shock cognate 71 kDa protein (Hspa8) and DNA polymerase beta (Polb), among other targets. Mutations in this gene cause spinocerebellar ataxia, autosomal recessive 16. Alternative splicing results in multiple transcript variants. There is a pseudogene for this gene on chromosome 2. [provided by RefSeq, Jun 2014] |
| Function | E3 ubiquitin-protein ligase which targets misfolded chaperone substrates towards proteasomal degradation. Collaborates with ATXN3 in the degradation of misfolded chaperone substrates: ATXN3 restricting the length of ubiquitin chain attached to STUB1/CHIP substrates and preventing further chain extension. Ubiquitinates NOS1 in concert with Hsp70 and Hsp40. Modulates the activity of several chaperone complexes, including Hsp70, Hsc70 and Hsp90. Mediates transfer of non-canonical short ubiquitin chains to HSPA8 that have no effect on HSPA8 degradation. Mediates polyubiquitination of DNA polymerase beta (POLB) at 'Lys-41', 'Lys-61' and 'Lys-81', thereby playing a role in base-excision repair: catalyzes polyubiquitination by amplifying the HUWE1/ARF-BP1-dependent monoubiquitination and leading to POLB-degradation by the proteasome. Mediates polyubiquitination of CYP3A4. Ubiquitinates EPHA2 and may regulate the receptor stability and activity through proteasomal degradation. Negatively regulates the suppressive function of regulatory T-cells (Treg) during inflammation by mediating the ubiquitination and degradation of FOXP3 in a HSPA1A/B-dependent manner. [UniProt] |
| Research Area | Gene Regulation antibody; Signaling Transduction antibody |
| Calculated Mw | 35 kDa |
| PTM | Monoubiquitinated at Lys-2 following cell stress by UBE2W, promoting the interaction with ATXN3 (By similarity). Auto-ubiquitinated; mediated by UBE2D1 and UBE2D2. |
| Cellular Localization | Cytoplasm. |

Images





ARG55429 anti-STUB1 / CHIP antibody FACS image

Flow Cytometry: K562 cells stained with ARG55429 anti-STUB1 / CHIP antibody (right histogram) or without primary antibody control (left histogram), followed by incubation with FITC labelled secondary antibody.