

## ARG55464 anti-NCF1 / p47phox antibody

Package: 100 µl  
Store at: -20°C

### Summary

Product Description	Rabbit Polyclonal antibody recognizes NCF1 / p47phox
Tested Reactivity	Hu, Ms, Rat
Tested Application	ICC/IF, IP, WB
Host	Rabbit
Clonality	Polyclonal
Isotype	IgG
Target Name	NCF1 / p47phox
Species	Human
Immunogen	Recombinant protein of Human NCF1 (NP_000256.4)
Conjugation	Un-conjugated
Alternate Names	Nox organizer 2; SH3PXD1A; NCF-47K; 47 kDa autosomal chronic granulomatous disease protein; NOXO2; Nox-organizing protein 2; 47 kDa neutrophil oxidase factor; Neutrophil cytosol factor 1; SH3 and PX domain-containing protein 1A; p47phox; NCF1A; Neutrophil NADPH oxidase factor 1; p47-phox; NCF-1

### Application Instructions

Predict Reactivity Note	Rat								
Application table	<table> <tr> <th>Application</th><th>Dilution</th></tr> <tr> <td>ICC/IF</td><td>1:50 - 1:200</td></tr> <tr> <td>IP</td><td>Assay-dependent</td></tr> <tr> <td>WB</td><td>1:500 - 1:2000</td></tr> </table>	Application	Dilution	ICC/IF	1:50 - 1:200	IP	Assay-dependent	WB	1:500 - 1:2000
Application	Dilution								
ICC/IF	1:50 - 1:200								
IP	Assay-dependent								
WB	1:500 - 1:2000								
Application Note	* The dilutions indicate recommended starting dilutions and the optimal dilutions or concentrations should be determined by the scientist.								
Positive Control	Mouse lung								

### Properties

Form	Liquid
Purification	Affinity purification with immunogen.
Buffer	PBS (pH 7.3), 0.02% Sodium azide and 50% Glycerol
Preservative	0.02% Sodium azide
Stabilizer	50% Glycerol
Storage instruction	For continuous use, store undiluted antibody at 2-8°C for up to a week. For long-term storage, aliquot and store at -20°C. Storage in frost free freezers is not recommended. Avoid repeated freeze/thaw

cycles. Suggest spin the vial prior to opening. The antibody solution should be gently mixed before use.

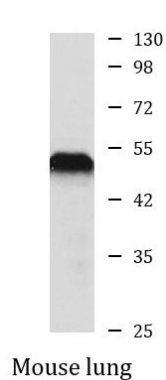
#### Note

For laboratory research only, not for drug, diagnostic or other use.

## Bioinformation

Database links	<a href="#">GeneID: 17969 Mouse</a> <a href="#">GeneID: 653361 Human</a> <a href="#">Swiss-port # P14598 Human</a> <a href="#">Swiss-port # Q09014 Mouse</a>
Gene Symbol	NCF1
Gene Full Name	neutrophil cytosolic factor 1
Background	The protein encoded by this gene is a 47 kDa cytosolic subunit of neutrophil NADPH oxidase. This oxidase is a multicomponent enzyme that is activated to produce superoxide anion. Mutations in this gene have been associated with chronic granulomatous disease. [provided by RefSeq, Jul 2008]
Function	NCF2, NCF1, and a membrane bound cytochrome b558 are required for activation of the latent NADPH oxidase (necessary for superoxide production). [UniProt]
Research Area	Cancer antibody; Metabolism antibody; Signaling Transduction antibody
Calculated Mw	45 kDa
PTM	Phosphorylated by PRKCD; phosphorylation induces activation of NCF1 and NADPH oxidase activity.

## Images



ARG55464 anti-NCF1 / p47phox antibody WB image

Western blot: Mouse lung lysate stained with ARG55464 anti-NCF1 / p47phox antibody.