

## ARG55465 anti-RRM1 antibody

Package: 100 µl, 50 µl  
Store at: -20°C

### Summary

Product Description	Rabbit Polyclonal antibody recognizes RRM1
Tested Reactivity	Hu, Ms
Predict Reactivity	Rat
Tested Application	ICC/IF, WB
Host	Rabbit
Clonality	Polyclonal
Isotype	IgG
Target Name	RRM1
Species	Human
Immunogen	Recombinant protein of Human RRM1 (NP_001024.1)
Conjugation	Un-conjugated
Alternate Names	Ribonucleoside-diphosphate reductase large subunit; R1; EC 1.17.4.1; Ribonucleoside-diphosphate reductase subunit M1; Ribonucleotide reductase large subunit; RIR1; RR1

### Application Instructions

Application table	Application	Dilution
	ICC/IF	1:50 - 1:200
	WB	1:500 - 1:2000
Application Note	* The dilutions indicate recommended starting dilutions and the optimal dilutions or concentrations should be determined by the scientist.	

### Properties

Form	Liquid
Purification	Affinity purification with immunogen.
Buffer	PBS (pH 7.3), 0.02% Sodium azide and 50% Glycerol
Preservative	0.02% Sodium azide
Stabilizer	50% Glycerol
Storage instruction	For continuous use, store undiluted antibody at 2-8°C for up to a week. For long-term storage, aliquot and store at -20°C. Storage in frost free freezers is not recommended. Avoid repeated freeze/thaw cycles. Suggest spin the vial prior to opening. The antibody solution should be gently mixed before use.
Note	For laboratory research only, not for drug, diagnostic or other use.

### Database links

[GeneID: 20133 Mouse](#)

[GeneID: 6240 Human](#)

[Swiss-port # P07742 Mouse](#)

[Swiss-port # P23921 Human](#)

### Gene Symbol

RRM1

### Gene Full Name

ribonucleotide reductase M1

### Background

This gene encodes one of two non-identical subunits that constitute ribonucleoside-diphosphate reductase, an enzyme essential for the production of deoxyribonucleotides prior to DNA synthesis in S phase of dividing cells. It is one of several genes located in the imprinted gene domain of 11p15.5, an important tumor-suppressor gene region. Alterations in this region have been associated with the Beckwith-Wiedemann syndrome, Wilms tumor, rhabdomyosarcoma, adrenocortical carcinoma, and lung, ovarian, and breast cancer. This gene may play a role in malignancies and disease that involve this region. [provided by RefSeq, Jul 2008]

### Function

Provides the precursors necessary for DNA synthesis. Catalyzes the biosynthesis of deoxyribonucleotides from the corresponding ribonucleotides. [UniProt]

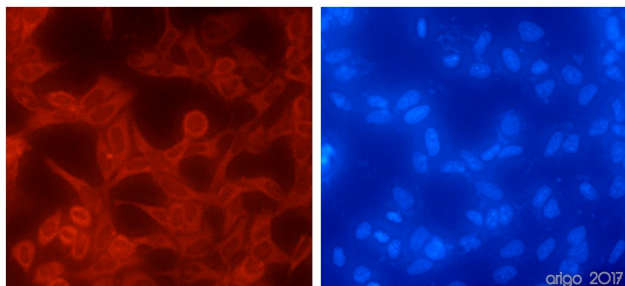
### Research Area

Gene Regulation antibody

### Calculated Mw

90 kDa

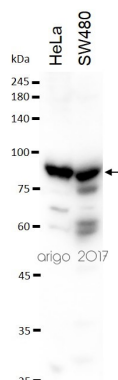
## Images



ARG55465 anti-RRM1 antibody ICC/IF image

Immunofluorescence: 100% Methanol fixed (RT, 10 min) HeLa cells stained with ARG55465 anti-RRM1 antibody at 1:50 dilution. Left: primary antibody (red). Right: DAPI (blue).

Secondary antibody: [ARG21917](#) Goat anti-Rabbit IgG antibody (TRITC)



ARG55465 anti-RRM1 antibody WB image

Western blot: 30 µg of HeLa and SW480 cell lysates stained with ARG55465 anti-RRM1 antibody at 1:500 dilution.