

## ARG55473 anti-PSMD2 / Proteasome 26S S2 antibody

Package: 100 µl  
Store at: -20°C

### Summary

Product Description	Rabbit Polyclonal antibody recognizes PSMD2 / Proteasome 26S S2
Tested Reactivity	Hu, Ms
Tested Application	ICC/IF, WB
Host	Rabbit
Clonality	Polyclonal
Isotype	IgG
Target Name	PSMD2 / Proteasome 26S S2
Species	Human
Immunogen	Recombinant protein of Human PSMD2
Conjugation	Un-conjugated
Alternate Names	RPN1; TRAP2; 26S proteasome subunit p97; S2; Protein 55.11; P97; 26S proteasome non-ATPase regulatory subunit 2; 26S proteasome regulatory subunit S2; 26S proteasome regulatory subunit RPN1; Tumor necrosis factor type 1 receptor-associated protein 2

### Application Instructions

Predict Reactivity Note	Rat						
Application table	<table> <tr> <th>Application</th><th>Dilution</th></tr> <tr> <td>ICC/IF</td><td>1:50 - 1:200</td></tr> <tr> <td>WB</td><td>1:500 - 1:2000</td></tr> </table>	Application	Dilution	ICC/IF	1:50 - 1:200	WB	1:500 - 1:2000
Application	Dilution						
ICC/IF	1:50 - 1:200						
WB	1:500 - 1:2000						
Application Note	* The dilutions indicate recommended starting dilutions and the optimal dilutions or concentrations should be determined by the scientist.						
Positive Control	SW480 and Mouse liver						
Observed Size	~ 100 kDa						

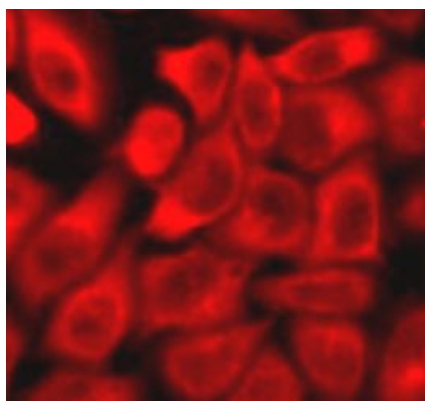
### Properties

Form	Liquid
Purification	Affinity purification with immunogen.
Buffer	PBS (pH 7.3), 0.02% Sodium azide and 50% Glycerol
Preservative	0.02% Sodium azide
Stabilizer	50% Glycerol
Storage instruction	For continuous use, store undiluted antibody at 2-8°C for up to a week. For long-term storage, aliquot and store at -20°C. Storage in frost free freezers is not recommended. Avoid repeated freeze/thaw cycles. Suggest spin the vial prior to opening. The antibody solution should be gently mixed before use.

## Bioinformation

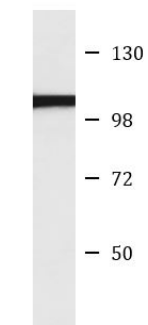
Database links	<a href="#">GeneID: 21762 Mouse</a> <a href="#">GeneID: 5708 Human</a> <a href="#">Swiss-port # Q13200 Human</a> <a href="#">Swiss-port # Q8VDM4 Mouse</a>
Gene Symbol	PSMD2
Gene Full Name	proteasome (prosome, macropain) 26S subunit, non-ATPase, 2
Background	<p>The 26S proteasome is a multicatalytic proteinase complex with a highly ordered structure composed of 2 complexes, a 20S core and a 19S regulator. The 20S core is composed of 4 rings of 28 non-identical subunits; 2 rings are composed of 7 alpha subunits and 2 rings are composed of 7 beta subunits. The 19S regulator is composed of a base, which contains 6 ATPase subunits and 2 non-ATPase subunits, and a lid, which contains up to 10 non-ATPase subunits. Proteasomes are distributed throughout eukaryotic cells at a high concentration and cleave peptides in an ATP/ubiquitin-dependent process in a non-lysosomal pathway. An essential function of a modified proteasome, the immunoproteasome, is the processing of class I MHC peptides. This gene encodes one of the non-ATPase subunits of the 19S regulator lid. In addition to participation in proteasome function, this subunit may also participate in the TNF signalling pathway since it interacts with the tumor necrosis factor type 1 receptor. A pseudogene has been identified on chromosome 1. Alternative splicing results in multiple transcript variants of this gene. [provided by RefSeq, Jul 2013]</p>
Function	<p>Acts as a regulatory subunit of the 26 proteasome which is involved in the ATP-dependent degradation of ubiquitinated proteins.</p> <p>Binds to the intracellular domain of tumor necrosis factor type 1 receptor. The binding domain of TRAP1 and TRAP2 resides outside the death domain of TNFR1. [UniProt]</p>
Research Area	Cell Biology and Cellular Response antibody
Calculated Mw	100 kDa

## Images



ARG55473 anti-PSMD2 / Proteasome 26S S2 antibody ICC/IF image

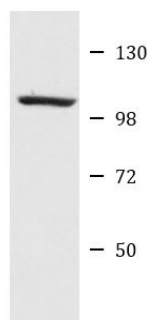
Immunofluorescence: HeLa cells stained with ARG55473 anti-PSMD2 / Proteasome 26S S2 antibody.



SW480

ARG55473 anti-PSMD2 / Proteasome 26S S2 antibody WB image

Western blot: SW480 cell lysate stained with ARG55473 anti-PSMD2 / Proteasome 26S S2 antibody.



Mouse liver

ARG55473 anti-PSMD2 / Proteasome 26S S2 antibody WB image

Western blot: Mouse liver lysate stained with ARG55473 anti-PSMD2 / Proteasome 26S S2 antibody.