

## ARG55500 anti-TRPV5 antibody

Package: 100 µl  
Store at: -20°C

### Summary

Product Description	Rabbit Polyclonal antibody recognizes TRPV5
Tested Reactivity	Hu, Ms, Rat
Tested Application	IHC-P, WB
Host	Rabbit
Clonality	Polyclonal
Isotype	IgG
Target Name	TRPV5
Species	Human
Immunogen	Recombinant protein of Human TRPV5 (NP_062815.3)
Conjugation	Un-conjugated
Alternate Names	ECaC1; OTRPC3; ECaC; CaT2; ECAC1; CAT2; TrpV5; Epithelial calcium channel 1; Transient receptor potential cation channel subfamily V member 5; Calcium transport protein 2; Osm-9-like TRP channel 3

### Application Instructions

Predict Reactivity Note	Rat						
Application table	<table> <tr> <th>Application</th><th>Dilution</th></tr> <tr> <td>IHC-P</td><td>1:50 - 1:200</td></tr> <tr> <td>WB</td><td>1:500 - 1:2000</td></tr> </table>	Application	Dilution	IHC-P	1:50 - 1:200	WB	1:500 - 1:2000
Application	Dilution						
IHC-P	1:50 - 1:200						
WB	1:500 - 1:2000						
Application Note	* The dilutions indicate recommended starting dilutions and the optimal dilutions or concentrations should be determined by the scientist.						
Positive Control	HepG2						

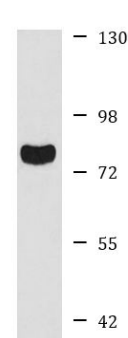
### Properties

Form	Liquid
Purification	Affinity purification with immunogen.
Buffer	PBS (pH 7.3), 0.02% Sodium azide and 50% Glycerol
Preservative	0.02% Sodium azide
Stabilizer	50% Glycerol
Storage instruction	For continuous use, store undiluted antibody at 2-8°C for up to a week. For long-term storage, aliquot and store at -20°C. Storage in frost free freezers is not recommended. Avoid repeated freeze/thaw cycles. Suggest spin the vial prior to opening. The antibody solution should be gently mixed before use.
Note	For laboratory research only, not for drug, diagnostic or other use.

Bioinformation

Gene Symbol	TRPV5
Gene Full Name	transient receptor potential cation channel, subfamily V, member 5
Background	This gene is a member of the transient receptor family and the TrpV subfamily. The calcium-selective channel encoded by this gene has 6 transmembrane-spanning domains, multiple potential phosphorylation sites, an N-linked glycosylation site, and 5 ANK repeats. This protein forms homotetramers or heterotetramers and is activated by a low internal calcium level. [provided by RefSeq, Jul 2008]
Function	Constitutively active calcium selective cation channel thought to be involved in Ca(2+) reabsorption in kidney and intestine. The channel is activated by low internal calcium level and the current exhibits an inward rectification. A Ca(2+)-dependent feedback regulation includes fast channel inactivation and slow current decay. Heteromeric assembly with TRPV6 seems to modify channel properties. TRPV5-TRPV6 heteromultimeric concatemers exhibit voltage-dependent gating (By similarity). [UniProt]
Research Area	Metabolism antibody; Signaling Transduction antibody
Calculated Mw	83 kDa
PTM	Glycosylated.

Images



HepG2

ARG55500 anti-TRPV5 antibody WB image

Western blot: HepG2 cell lysate stained with ARG55500 anti-TRPV5 antibody.