

**ARG55508**  
**anti-HMG20A antibody**Package: 100 µl  
Store at: -20°C

### Summary

Product Description	Rabbit Polyclonal antibody recognizes HMG20A
Tested Reactivity	Hu, Ms, Rat
Tested Application	ICC/IF, WB
Host	Rabbit
Clonality	Polyclonal
Isotype	IgG
Target Name	HMG20A
Species	Human
Immunogen	Recombinant protein of Human HMG20A
Conjugation	Un-conjugated
Alternate Names	HMGXB1; High mobility group protein 20A; HMGX1; HMG box-containing protein 20A; HMG domain-containing protein 1; HMG domain-containing protein HMGX1

### Application Instructions

Predict Reactivity Note	Rat						
Application table	<table><thead><tr><th>Application</th><th>Dilution</th></tr></thead><tbody><tr><td>ICC/IF</td><td>1:50 - 1:200</td></tr><tr><td>WB</td><td>1:500 - 1:2000</td></tr></tbody></table>	Application	Dilution	ICC/IF	1:50 - 1:200	WB	1:500 - 1:2000
Application	Dilution						
ICC/IF	1:50 - 1:200						
WB	1:500 - 1:2000						
Application Note	* The dilutions indicate recommended starting dilutions and the optimal dilutions or concentrations should be determined by the scientist.						

### Properties

Form	Liquid
Purification	Affinity purification with immunogen.
Buffer	PBS (pH 7.3), 0.02% Sodium azide and 50% Glycerol
Preservative	0.02% Sodium azide
Stabilizer	50% Glycerol
Storage instruction	For continuous use, store undiluted antibody at 2-8°C for up to a week. For long-term storage, aliquot and store at -20°C. Storage in frost free freezers is not recommended. Avoid repeated freeze/thaw cycles. Suggest spin the vial prior to opening. The antibody solution should be gently mixed before use.
Note	For laboratory research only, not for drug, diagnostic or other use.

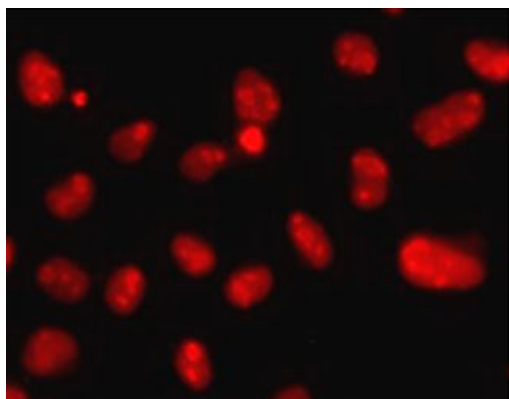
## Bioinformation

---

Database links	<a href="#">GeneID: 10363 Human</a> <a href="#">GeneID: 66867 Mouse</a> <a href="#">Swiss-port # Q9DC33 Mouse</a> <a href="#">Swiss-port # Q9NP66 Human</a>
Gene Symbol	HMG20A
Gene Full Name	high mobility group 20A
Function	Plays a role in neuronal differentiation as chromatin-associated protein. Acts as inhibitor of HMG20B. Overcomes the repressive effects of the neuronal silencer REST and induces the activation of neuronal-specific genes. Involved in the recruitment of the histone methyltransferase KMT2A/MLL1 and consequent increased methylation of histone H3 lysine 4 (By similarity). [UniProt]
Research Area	Gene Regulation antibody
Calculated Mw	40 kDa

## Images

---



ARG55508 anti-HMG20A antibody ICC/IF image

Immunofluorescence: MCF7 cells stained with ARG55508 anti-HMG20A antibody.