

ARG55511
anti-VANGL2 antibodyPackage: 100 µl
Store at: -20°C

Summary

Product Description	Rabbit Polyclonal antibody recognizes VANGL2
Tested Reactivity	Hu, Ms
Tested Application	IHC-P, WB
Host	Rabbit
Clonality	Polyclonal
Isotype	IgG
Target Name	VANGL2
Species	Human
Immunogen	Recombinant protein of Human VANGL2 (NP_065068.1)
Conjugation	Un-conjugated
Alternate Names	Strabismus 1; STBM; LTAP; Vang-like protein 2; Loop-tail protein 1 homolog; LPP1; STBM1; Van Gogh-like protein 2; STB1

Application Instructions

Predict Reactivity Note	Mouse, Rat						
Application table	<table><tr><th>Application</th><th>Dilution</th></tr><tr><td>IHC-P</td><td>1:50 - 1:200</td></tr><tr><td>WB</td><td>1:500 - 1:2000</td></tr></table>	Application	Dilution	IHC-P	1:50 - 1:200	WB	1:500 - 1:2000
Application	Dilution						
IHC-P	1:50 - 1:200						
WB	1:500 - 1:2000						
Application Note	* The dilutions indicate recommended starting dilutions and the optimal dilutions or concentrations should be determined by the scientist.						

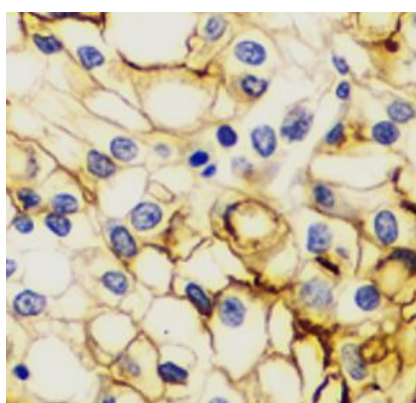
Properties

Form	Liquid
Purification	Affinity purification with immunogen.
Buffer	PBS (pH 7.3), 0.02% Sodium azide and 50% Glycerol
Preservative	0.02% Sodium azide
Stabilizer	50% Glycerol
Storage instruction	For continuous use, store undiluted antibody at 2-8°C for up to a week. For long-term storage, aliquot and store at -20°C. Storage in frost free freezers is not recommended. Avoid repeated freeze/thaw cycles. Suggest spin the vial prior to opening. The antibody solution should be gently mixed before use.
Note	For laboratory research only, not for drug, diagnostic or other use.

Bioinformation

Database links	GeneID: 57216 Human GeneID: 93840 Mouse Swiss-port # Q91ZD4 Mouse Swiss-port # Q9ULK5 Human
Gene Symbol	VANGL2
Gene Full Name	VANGL planar cell polarity protein 2
Background	The protein encoded by this gene is a membrane protein involved in the regulation of planar cell polarity, especially in the stereociliary bundles of the cochlea. The encoded protein transmits directional signals to individual cells or groups of cells in epithelial sheets. This protein is also involved in the development of the neural plate. [provided by RefSeq, Sep 2011]
Function	Involved in the control of early morphogenesis and patterning of both axial midline structures and the development of neural plate. Plays a role in the regulation of planar cell polarity, particularly in the orientation of stereociliary bundles in the cochlea. Required for polarization and movement of myocardializing cells in the outflow tract and seems to act via RHOA signaling to regulate this process. Required for cell surface localization of FZD3 and FZD6 in the inner ear (By similarity). [UniProt]
Research Area	Cell Biology and Cellular Response antibody; Developmental Biology antibody; Neuroscience antibody; Signaling Transduction antibody
Calculated Mw	60 kDa

Images



ARG55511 anti-VANGL2 antibody IHC-P image

Immunohistochemistry: Paraffin-embedded Human kidney cancer tissue stained with ARG55511 anti-VANGL2 antibody at 1:100 dilution.