

ARG55520 anti-CD272 / BTLA antibody

Package: 100 µl
Store at: -20°C

Summary

Product Description	Rabbit Polyclonal antibody recognizes CD272 / BTLA
Tested Reactivity	Ms, Rat
Predict Reactivity	Hu
Tested Application	WB
Host	Rabbit
Clonality	Polyclonal
Isotype	IgG
Target Name	CD272 / BTLA
Species	Human
Immunogen	Recombinant protein of Human BTLA
Conjugation	Un-conjugated
Alternate Names	CD antigen CD272; BTLA1; B- and T-lymphocyte-associated protein; B- and T-lymphocyte attenuator; CD272

Application Instructions

Application table	Application	Dilution
	WB	1:500 - 1:2000
Application Note	* The dilutions indicate recommended starting dilutions and the optimal dilutions or concentrations should be determined by the scientist.	
Positive Control	Rat lung	
Observed Size	~ 33 kDa	

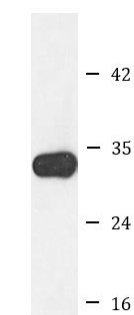
Properties

Form	Liquid
Purification	Affinity purification with immunogen.
Buffer	PBS (pH 7.3), 0.02% Sodium azide and 50% Glycerol
Preservative	0.02% Sodium azide
Stabilizer	50% Glycerol
Storage instruction	For continuous use, store undiluted antibody at 2-8°C for up to a week. For long-term storage, aliquot and store at -20°C. Storage in frost free freezers is not recommended. Avoid repeated freeze/thaw cycles. Suggest spin the vial prior to opening. The antibody solution should be gently mixed before use.
Note	For laboratory research only, not for drug, diagnostic or other use.

Bioinformation

Database links	GeneID: 208154 Mouse GeneID: 407756 Rat Swiss-port # Q6PNM1 Rat Swiss-port # Q7TSA3 Mouse
Gene Symbol	BTLA
Gene Full Name	B and T lymphocyte associated
Background	This gene encodes a member of the immunoglobulin superfamily. The encoded protein contains a single immunoglobulin (Ig) domain and is a receptor that relays inhibitory signals to suppress the immune response. Alternative splicing results in multiple transcript variants. Polymorphisms in this gene have been associated with an increased risk of rheumatoid arthritis. [provided by RefSeq, Aug 2011]
Function	Lymphocyte inhibitory receptor which inhibits lymphocytes during immune response. [UniProt]
Research Area	Immune System antibody
Calculated Mw	33 kDa
PTM	Phosphorylated on Tyr residues by TNFRSF14 and by antigen receptors cross-linking, both inducing association with PTPN6 and PTPN11. N-glycosylated.

Images



Rat lung

ARG55520 anti-CD272 / BTLA antibody WB image

Western blot: Rat lung lysate stained with ARG55520 anti-CD272 / BTLA antibody.