

ARG55526 anti-K-Ras antibody

Package: 100 µl

Store at: -20°C

Summary

Product Description	Rabbit Polyclonal antibody recognizes K-Ras
Tested Reactivity	Hu, Ms
Predict Reactivity	Rat
Tested Application	FACS, WB
Specificity	Based on the sequence homologous information, this antibody might cross-react to H-Ras (70%) and N-Ras (90%).
Host	Rabbit
Clonality	Polyclonal
Isotype	IgG
Target Name	K-Ras
Species	Human
Immunogen	KLH-conjugated synthetic peptide corresponding to aa. 146-174 (C-terminus) of Human K-Ras.
Conjugation	Un-conjugated
Alternate Names	NS3; KRAS1; KRAS2; RALD; K-RAS4A; GTPase KRas; c-Ki-ras; KI-RAS; RASK2; K-RAS2B; K-RAS2A; K-RAS4B; c-K-ras; C-K-RAS; NS; CFC2; Ki-Ras; K-Ras 2

Application Instructions

Application table	Application	Dilution
	FACS	1:10 - 1:50
	WB	1:1000
Application Note	* The dilutions indicate recommended starting dilutions and the optimal dilutions or concentrations should be determined by the scientist.	
Positive Control	NIH/3T3	

Properties

Form	Liquid
Purification	Purification with Protein A and immunogen peptide.
Buffer	PBS and 0.09% (W/V) Sodium azide
Preservative	0.09% (W/V) Sodium azide
Storage instruction	For continuous use, store undiluted antibody at 2-8°C for up to a week. For long-term storage, aliquot and store at -20°C or below. Storage in frost free freezers is not recommended. Avoid repeated freeze/thaw cycles. Suggest spin the vial prior to opening. The antibody solution should be gently mixed before use.

Note

For laboratory research only, not for drug, diagnostic or other use.

Bioinformation

Database links

[GeneID: 16653 Mouse](#)

[GeneID: 3845 Human](#)

[Swiss-port # P01116 Human](#)

[Swiss-port # P32883 Mouse](#)

Gene Symbol

KRAS

Gene Full Name

Kirsten rat sarcoma viral oncogene homolog

Background

This gene, a Kirsten ras oncogene homolog from the mammalian ras gene family, encodes a protein that is a member of the small GTPase superfamily. A single amino acid substitution is responsible for an activating mutation. The transforming protein that results is implicated in various malignancies, including lung adenocarcinoma, mucinous adenoma, ductal carcinoma of the pancreas and colorectal carcinoma. Alternative splicing leads to variants encoding two isoforms that differ in the C-terminal region. [provided by RefSeq, Jul 2008]

Function

Ras proteins bind GDP/GTP and possess intrinsic GTPase activity. Plays an important role in the regulation of cell proliferation. [UniProt]

Research Area

Cancer antibody; Gene Regulation antibody; Signaling Transduction antibody

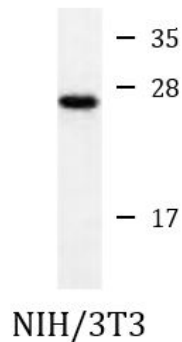
Calculated Mw

22 kDa

PTM

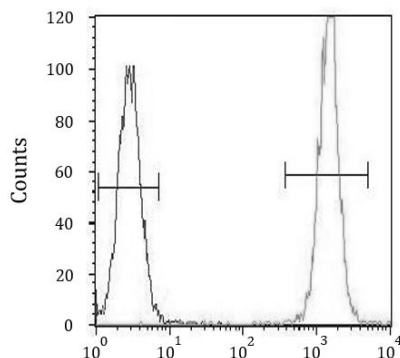
Acetylation at Lys-104 prevents interaction with guanine nucleotide exchange factors (GEFs).

Images



ARG55526 anti-K-Ras antibody WB image

Western blot: 35 µg of NIH/3T3 cell lysate stained with ARG55526 anti-K-Ras antibody.



ARG55526 anti-K-Ras antibody FACS image

Flow Cytometry: Hela cells stained with ARG55526 anti-K-Ras antibody (right histogram) or without primary antibody control (left histogram), followed by incubation with FITC labelled secondary antibody.