

ARG55527 anti-BTBD1 antibody

Package: 100 µl
Store at: -20°C

Summary

Product Description	Rabbit Polyclonal antibody recognizes BTBD1
Tested Reactivity	Hu, Ms
Tested Application	FACS, WB
Host	Rabbit
Clonality	Polyclonal
Isotype	IgG
Target Name	BTBD1
Species	Human
Immunogen	KLH-conjugated synthetic peptide corresponding to aa. 295-322 (Center) of Human BTBD1.
Conjugation	Un-conjugated
Alternate Names	HCV NS5A-transactivated protein 8; NS5ATP8; BTB/POZ domain-containing protein 1; Hepatitis C virus NS5A-transactivated protein 8; C15orf1

Application Instructions

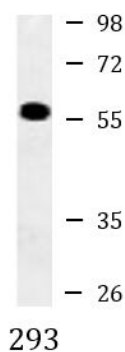
Application table	Application	Dilution
	FACS	1:10 - 1:50
	WB	1:1000
Application Note	* The dilutions indicate recommended starting dilutions and the optimal dilutions or concentrations should be determined by the scientist.	
Positive Control	293	

Properties

Form	Liquid
Purification	This antibody is prepared by Saturated Ammonium Sulfate (SAS) precipitation followed by dialysis against PBS.
Buffer	PBS and 0.09% (W/V) Sodium azide
Preservative	0.09% (W/V) Sodium azide
Storage instruction	For continuous use, store undiluted antibody at 2-8°C for up to a week. For long-term storage, aliquot and store at -20°C or below. Storage in frost free freezers is not recommended. Avoid repeated freeze/thaw cycles. Suggest spin the vial prior to opening. The antibody solution should be gently mixed before use.
Note	For laboratory research only, not for drug, diagnostic or other use.

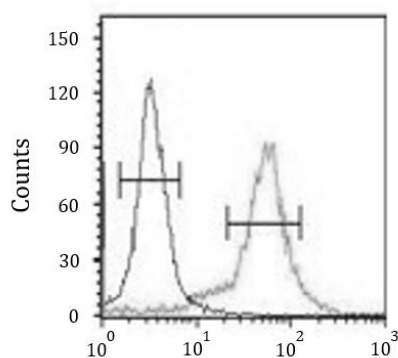
Database links	GeneID: 53339 Human GeneID: 83962 Mouse Swiss-port # P58544 Mouse Swiss-port # Q9H0C5 Human
Gene Symbol	BTBD1
Gene Full Name	BTB (POZ) domain containing 1
Background	The C-terminus of the protein encoded by this gene binds topoisomerase I. The N-terminus contains a proline-rich region and a BTB/POZ domain (broad-complex, Tramtrack and bric a brac/Pox virus and Zinc finger), both of which are typically involved in protein-protein interactions. Subcellularly, the protein localizes to cytoplasmic bodies. Alternative splicing results in multiple transcript variants encoding different isoforms. [provided by RefSeq, Jul 2008]
Function	Probable substrate-specific adapter of an E3 ubiquitin-protein ligase complex which mediates the ubiquitination and subsequent proteasomal degradation of target proteins. [UniProt]
Research Area	Cell Biology and Cellular Response antibody; Microbiology and Infectious Disease antibody
Calculated Mw	53 kDa
Cellular Localization	Cytoplasm, P-body. Note=Cytoplasmic bodies

Images



ARG55527 anti-BTBD1 antibody WB image

Western blot: 35 µg of 293 cell lysate stained with ARG55527 anti-BTBD1 antibody.



ARG55527 anti-BTBD1 antibody FACS image

Flow Cytometry: 293 cells stained with ARG55527 anti-BTBD1 antibody (right histogram) or without primary antibody control (left histogram), followed by incubation with FITC labelled secondary antibody.