

ARG55533 anti-CD3 zeta antibody

Package: 100 µl
Store at: -20°C

Summary

Product Description	Rabbit Polyclonal antibody recognizes CD3 zeta
Tested Reactivity	Hu
Predict Reactivity	Pig
Tested Application	FACS, WB
Host	Rabbit
Clonality	Polyclonal
Isotype	IgG
Target Name	CD3 zeta
Species	Human
Immunogen	KLH-conjugated synthetic peptide corresponding to aa. 2-31 (N-terminus) of Human CD3 zeta.
Conjugation	Un-conjugated
Alternate Names	IMD25; CD3Z; CD3-ZETA; T-cell surface glycoprotein CD3 zeta chain; CD3Q; T-cell receptor T3 zeta chain; CD3H; TCRZ; T3Z; CD antigen CD247

Application Instructions

Application table	Application	Dilution
	FACS	1:10 - 1:50
	WB	1:1000
Application Note	* The dilutions indicate recommended starting dilutions and the optimal dilutions or concentrations should be determined by the scientist.	
Positive Control	MOLT-4	

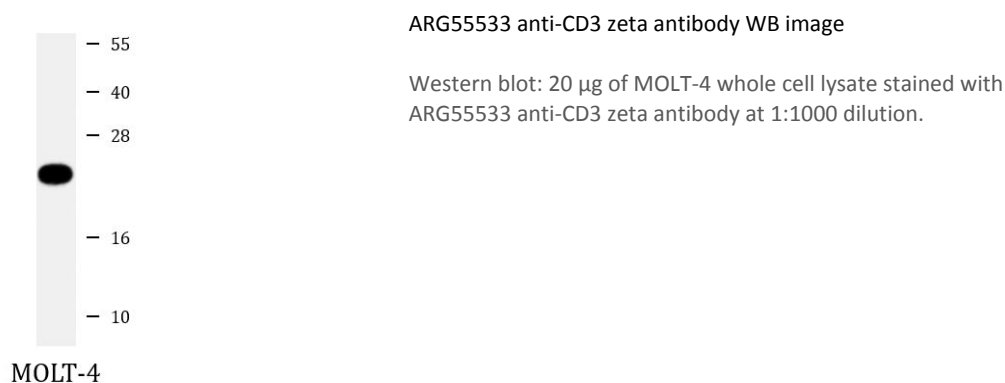
Properties

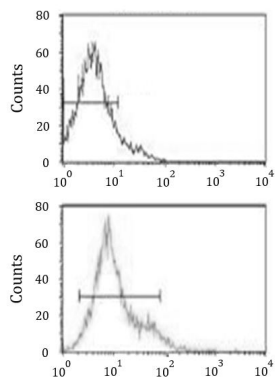
Form	Liquid
Purification	Purification with Protein A and immunogen peptide.
Buffer	PBS and 0.09% (W/V) Sodium azide
Preservative	0.09% (W/V) Sodium azide
Storage instruction	For continuous use, store undiluted antibody at 2-8°C for up to a week. For long-term storage, aliquot and store at -20°C or below. Storage in frost free freezers is not recommended. Avoid repeated freeze/thaw cycles. Suggest spin the vial prior to opening. The antibody solution should be gently mixed before use.
Note	For laboratory research only, not for drug, diagnostic or other use.

Bioinformation

Database links	GeneID: 919 Human Swiss-port # P20963 Human
Gene Symbol	CD247
Gene Full Name	CD247 molecule
Background	The protein encoded by this gene is T-cell receptor zeta, which together with T-cell receptor alpha/beta and gamma/delta heterodimers, and with CD3-gamma, -delta and -epsilon, forms the T-cell receptor-CD3 complex. The zeta chain plays an important role in coupling antigen recognition to several intracellular signal-transduction pathways. Low expression of the antigen results in impaired immune response. Two alternatively spliced transcript variants encoding distinct isoforms have been found for this gene. [provided by RefSeq, Jul 2008]
Function	Probable role in assembly and expression of the TCR complex as well as signal transduction upon antigen triggering. [UniProt]
Highlight	Related products: CD3 antibodies ; CD3 ELISA Kits ; CD3 Duos / Panels ; Anti-Rabbit IgG secondary antibodies ; Related news: New antibody panels and duos for Tumor immune microenvironment Tumor-Infiltrating Lymphocytes (TILs)
Research Area	Developmental Biology antibody; Immune System antibody
Calculated Mw	19 kDa
PTM	Phosphorylated on Tyr residues after T-cell receptor triggering.
Cellular Localization	Membrane; Single-pass type I membrane protein

Images





ARG55533 anti-CD3 zeta antibody FACS image

Flow Cytometry: Ramos cells stained with ARG55533 anti-CD3 zeta antibody (bottom histogram) or without primary antibody control (top histogram), followed by incubation with FITC labelled secondary antibody.