

## ARG55557 anti-ATP1B2 / Na<sup>+</sup> K<sup>+</sup> ATPase beta 2 antibody

Package: 100 µl  
Store at: -20°C

### Summary

Product Description	Rabbit Polyclonal antibody recognizes ATP1B2 / Na <sup>+</sup> K <sup>+</sup> ATPase beta 2
Tested Reactivity	Hu, Ms
Predict Reactivity	Bov, Rb
Tested Application	FACS, IHC-P, WB
Host	Rabbit
Clonality	Polyclonal
Isotype	IgG
Target Name	ATP1B2 / Na <sup>+</sup> K <sup>+</sup> ATPase beta 2
Species	Human
Immunogen	KLH-conjugated synthetic peptide corresponding to aa. 115-141 (Center) of Human Na <sup>+</sup> K <sup>+</sup> ATPase beta 2.
Conjugation	Un-conjugated
Alternate Names	Sodium/potassium-dependent ATPase subunit beta-2; Sodium/potassium-transporting ATPase subunit beta-2; AMOG; Adhesion molecule in glia; adhesion molecule on glia; AT1B2; ATPB2; ATPB2S; Na <sup>+</sup> K <sup>+</sup> ATPase beta 2; Na K ATPase beta 2; sodium potassium ATPase beta 2; ATPase Na <sup>+</sup> K <sup>+</sup> beta 2; ATPase Na K beta 2; ATPase sodium potassium beta 2

### Application Instructions

Application table	Application	Dilution
	FACS	1:10 - 1:50
	IHC-P	1:50 - 1:100
	WB	1:1000
Application Note	* The dilutions indicate recommended starting dilutions and the optimal dilutions or concentrations should be determined by the scientist.	
Positive Control	Human brain	

### Properties

Form	Liquid
Purification	Purification with Protein A and immunogen peptide.
Buffer	PBS and 0.09% (W/V) Sodium azide
Preservative	0.09% (W/V) Sodium azide
Storage instruction	For continuous use, store undiluted antibody at 2-8°C for up to a week. For long-term storage, aliquot and store at -20°C or below. Storage in frost free freezers is not recommended. Avoid repeated

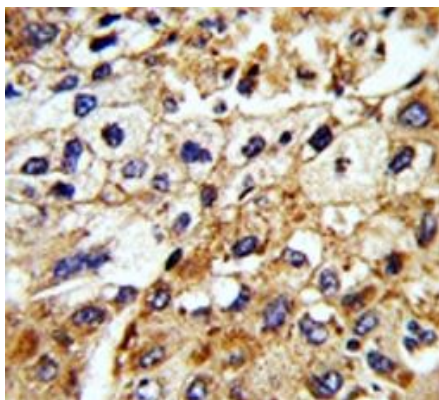
freeze/thaw cycles. Suggest spin the vial prior to opening. The antibody solution should be gently mixed before use.

**Note** For laboratory research only, not for drug, diagnostic or other use.

## Bioinformation

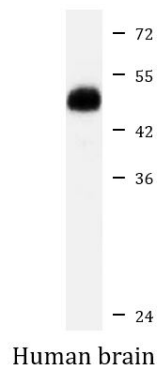
Database links	<a href="#">GeneID: 11932 Mouse</a> <a href="#">GeneID: 482 Human</a> <a href="#">Swiss-port # P14231 Mouse</a> <a href="#">Swiss-port # P14415 Human</a>
Gene Symbol	ATP1B2
Gene Full Name	ATPase, Na <sup>+</sup> /K <sup>+</sup> transporting, beta 2 polypeptide
Background	The protein encoded by this gene belongs to the family of Na <sup>+</sup> /K <sup>+</sup> and H <sup>+</sup> /K <sup>+</sup> ATPases beta chain proteins, and to the subfamily of Na <sup>+</sup> /K <sup>+</sup> -ATPases. Na <sup>+</sup> /K <sup>+</sup> -ATPase is an integral membrane protein responsible for establishing and maintaining the electrochemical gradients of Na and K ions across the plasma membrane. These gradients are essential for osmoregulation, for sodium-coupled transport of a variety of organic and inorganic molecules, and for electrical excitability of nerve and muscle. This enzyme is composed of two subunits, a large catalytic subunit (alpha) and a smaller glycoprotein subunit (beta). The beta subunit regulates, through assembly of alpha/beta heterodimers, the number of sodium pumps transported to the plasma membrane. The glycoprotein subunit of Na <sup>+</sup> /K <sup>+</sup> -ATPase is encoded by multiple genes. This gene encodes a beta 2 subunit. Two transcript variants encoding different isoforms have been found for this gene. [provided by RefSeq, Dec 2014]
Function	This is the non-catalytic component of the active enzyme, which catalyzes the hydrolysis of ATP coupled with the exchange of Na(+) and K(+) ions across the plasma membrane. The exact function of the beta-2 subunit is not known.  Mediates cell adhesion of neurons and astrocytes, and promotes neurite outgrowth. [UniProt]
Research Area	Signaling Transduction antibody
Calculated Mw	33 kDa
Cellular Localization	Cell membrane; Single-pass type II membrane protein

## Images



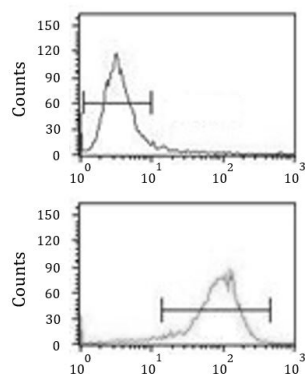
ARG55557 anti-ATP1B2 / Na<sup>+</sup> K<sup>+</sup> ATPase beta 2 antibody IHC-P image

Immunohistochemistry: Formalin-fixed and paraffin-embedded Human hepatocarcinoma stained with ARG55557 anti-ATP1B2 / Na<sup>+</sup> K<sup>+</sup> ATPase beta 2 antibody.



ARG55557 anti-ATP1B2 / Na<sup>+</sup> K<sup>+</sup> ATPase beta 2 antibody WB image

Western blot: Human brain lysate stained with ARG55557 anti-ATP1B2 / Na<sup>+</sup> K<sup>+</sup> ATPase beta 2 antibody at 1:1000 dilution.



ARG55557 anti-ATP1B2 / Na<sup>+</sup> K<sup>+</sup> ATPase beta 2 antibody FACS image

Flow Cytometry: K562 cells stained with ARG55557 anti-ATP1B2 / Na<sup>+</sup> K<sup>+</sup> ATPase beta 2 antibody (bottom histogram) or without primary antibody control (top histogram), followed by incubation with FITC labelled secondary antibody.