

ARG55565 anti-CtBP1 antibody

Package: 100 µl
Store at: -20°C

Summary

Product Description	Rabbit Polyclonal antibody recognizes CtBP1
Tested Reactivity	Hu, Ms, Rat
Tested Application	ICC/IF, WB
Host	Rabbit
Clonality	Polyclonal
Isotype	IgG
Target Name	CtBP1
Species	Human
Immunogen	KLH-conjugated synthetic peptide corresponding to aa. 413-440 (C-terminus) of Human CtBP1.
Conjugation	Un-conjugated
Alternate Names	EC 1.1.1.-; CtBP1; BARS; C-terminal-binding protein 1

Application Instructions

Application table	Application	Dilution
	ICC/IF	1:10 - 1:50
	WB	1:1000
Application Note	* The dilutions indicate recommended starting dilutions and the optimal dilutions or concentrations should be determined by the scientist.	
Positive Control	Jurkat	

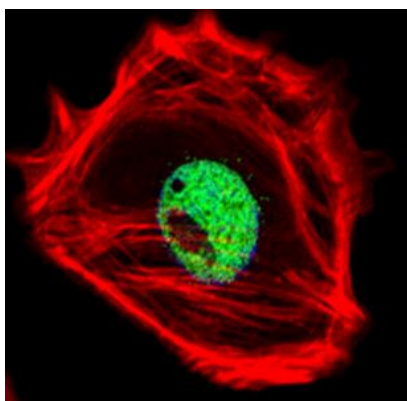
Properties

Form	Liquid
Purification	Purification with Protein A and immunogen peptide.
Buffer	PBS and 0.09% (W/V) Sodium azide
Preservative	0.09% (W/V) Sodium azide
Storage instruction	For continuous use, store undiluted antibody at 2-8°C for up to a week. For long-term storage, aliquot and store at -20°C or below. Storage in frost free freezers is not recommended. Avoid repeated freeze/thaw cycles. Suggest spin the vial prior to opening. The antibody solution should be gently mixed before use.
Note	For laboratory research only, not for drug, diagnostic or other use.

Bioinformation

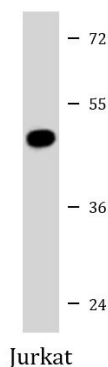
Gene Symbol	CTBP1
Gene Full Name	C-terminal binding protein 1
Background	This gene encodes a protein that binds to the C-terminus of adenovirus E1A proteins. This phosphoprotein is a transcriptional repressor and may play a role during cellular proliferation. This protein and the product of a second closely related gene, CTBP2, can dimerize. Both proteins can also interact with a polycomb group protein complex which participates in regulation of gene expression during development. Alternative splicing of transcripts from this gene results in multiple transcript variants. [provided by RefSeq, Jul 2008]
Function	Corepressor targeting diverse transcription regulators such as GLIS2 or BCL6. Has dehydrogenase activity. Involved in controlling the equilibrium between tubular and stacked structures in the Golgi complex. Functions in brown adipose tissue (BAT) differentiation. [UniProt]
Research Area	Cancer antibody; Cell Biology and Cellular Response antibody; Gene Regulation antibody; Microbiology and Infectious Disease antibody
Calculated Mw	48 kDa
PTM	The level of phosphorylation appears to be regulated during the cell cycle. Phosphorylation by HIPK2 on Ser-422 induces proteasomal degradation. ADP-ribosylated; when cells are exposed to brefeldin A.
Cellular Localization	Sumoylation on Lys-428 is promoted by the E3 SUMO-protein ligase CBX4. Cytoplasm. Nucleus

Images



ARG55565 anti-CtBP1 antibody ICC/IF image

Immunofluorescence: SK-BR-3 cells were fixed with 4% PFA (20 min), permeabilized with Triton X-100 (0.1%, 10 min), then stained with ARG55565 anti-CtBP1 antibody (green) at 1:25 dilution, 1 hour at 37°C. Cytoplasmic actin was counterstained with Alexa Fluor® 555 (red) conjugated Phalloidin (7 units/ml, 1 hour at 37°C).



ARG55565 anti-CtBP1 antibody WB image

Western blot: 35 µg of Jurkat cell lysate stained with ARG55565 anti-CtBP1 antibody.