

## ARG55604 anti-UCHL3 antibody

Package: 100 µl  
Store at: -20°C

### Summary

Product Description	Rabbit Polyclonal antibody recognizes UCHL3
Tested Reactivity	Hu
Predict Reactivity	Ms, Rat, Bov, Pig
Tested Application	IHC-P, WB
Host	Rabbit
Clonality	Polyclonal
Isotype	IgG
Target Name	UCHL3
Species	Human
Immunogen	KLH-conjugated synthetic peptide corresponding to aa. 195-225 (C-terminus) of Human UCHL3.
Conjugation	Un-conjugated
Alternate Names	UCH-L3; Ubiquitin carboxyl-terminal hydrolase isozyme L3; Ubiquitin thioesterase L3; EC 3.4.19.12

### Application Instructions

Application table	Application	Dilution
	IHC-P	1:10 - 1:50
	WB	1:1000
Application Note	* The dilutions indicate recommended starting dilutions and the optimal dilutions or concentrations should be determined by the scientist.	
Positive Control	293T	

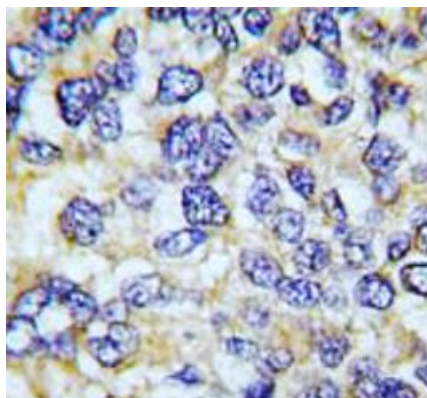
### Properties

Form	Liquid
Purification	Purification with Protein G.
Buffer	PBS and 0.09% (W/V) Sodium azide
Preservative	0.09% (W/V) Sodium azide
Storage instruction	For continuous use, store undiluted antibody at 2-8°C for up to a week. For long-term storage, aliquot and store at -20°C or below. Storage in frost free freezers is not recommended. Avoid repeated freeze/thaw cycles. Suggest spin the vial prior to opening. The antibody solution should be gently mixed before use.
Note	For laboratory research only, not for drug, diagnostic or other use.

## Bioinformation

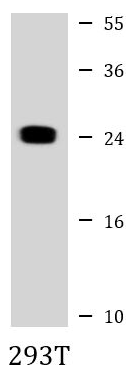
Database links	<a href="#">GeneID: 7347 Human</a> <a href="#">Swiss-port # P15374 Human</a>
Gene Symbol	UCHL3
Gene Full Name	ubiquitin carboxyl-terminal esterase L3 (ubiquitin thiolesterase)
Background	The protein encoded by this gene is a member of the deubiquitinating enzyme family. Members of this family are proteases that catalyze the removal of ubiquitin from polypeptides and are divided into five classes, depending on the mechanism of catalysis. This protein may hydrolyze the ubiquitinyl-N-epsilon amide bond of ubiquitinated proteins to regenerate ubiquitin for another catalytic cycle. Alternative splicing results in multiple transcript variants that encode different protein isoforms. [provided by RefSeq, Aug 2012]
Function	Deubiquitinating enzyme (DUB) that controls levels of cellular ubiquitin through processing of ubiquitin precursors and ubiquitinated proteins. Thiol protease that recognizes and hydrolyzes a peptide bond at the C-terminal glycine of either ubiquitin or NEDD8. Has a 10-fold preference for Arg and Lys at position P3", and exhibits a preference towards 'Lys-48'-linked Ubiquitin chains. Deubiquitinates ENAC in apical compartments, thereby regulating apical membrane recycling. Indirectly increases the phosphorylation of IGFIR, AKT and FOXO1 and promotes insulin-signaling and insulin-induced adipogenesis. Required for stress-response retinal, skeletal muscle and germ cell maintenance. May be involved in working memory. Can hydrolyze UBB(+1), a mutated form of ubiquitin which is not effectively degraded by the proteasome and is associated with neurogenerative disorders. [UniProt]
Research Area	Cell Biology and Cellular Response antibody; Gene Regulation antibody; Neuroscience antibody
Calculated Mw	26 kDa
Cellular Localization	Cytoplasm.

## Images



ARG55604 anti-UCHL3 antibody IHC-P image

Immunohistochemistry: Formalin-fixed and paraffin-embedded Human breast carcinoma tissue stained with ARG55604 anti-UCHL3 antibody.



ARG55604 anti-UCHL3 antibody WB image

Western blot: 35 µg of 293T cell lysate stained with ARG55604 anti-UCHL3 antibody at 1:1000 dilution.