

ARG55633 anti-CD206 / MMR antibody [15-2] (PE)

Package: 50 tests
Store at: 4°C

Summary

Product Description	PE-conjugated Mouse Monoclonal antibody [15-2] recognizes CD206 / MMR
Tested Reactivity	Hu, Ms
Tested Application	FACS
Specificity	This antibody recognizes CD206 (macrophage mannose receptor, MMR), a 162-175 kDa type I transmembrane protein expressed mainly on macrophages, dendritic cells and hepatic or lymphatic endothelial cells, but not on monocytes.
Host	Mouse
Clonality	Monoclonal
Clone	15-2
Isotype	IgG1
Target Name	CD206 / MMR
Species	Human
Immunogen	Purified Human CD206 / MMR (NP_002429.1).
Conjugation	PE
Alternate Names	CLEC13D; C-type lectin domain family 13 member D; Macrophage mannose receptor 1-like protein 1; C-type lectin domain family 13 member D-like; MMR; CLEC13DL; CD206; Macrophage mannose receptor 1; bA541I19.1; CD antigen CD206; MRC1L1

Application Instructions

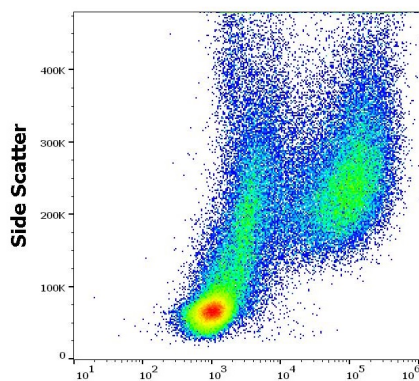
Application table	Application	Dilution
	FACS	10 µl / 10 ⁶ cells
Application Note	* The dilutions indicate recommended starting dilutions and the optimal dilutions or concentrations should be determined by the scientist.	

Properties

Form	Liquid
Buffer	PBS and 15 mM Sodium azide
Preservative	15 mM Sodium azide
Storage instruction	Aliquot and store in the dark at 2-8°C. Keep protected from prolonged exposure to light. Avoid repeated freeze/thaw cycles. Suggest spin the vial prior to opening. The antibody solution should be gently mixed before use.
Note	For laboratory research only, not for drug, diagnostic or other use.

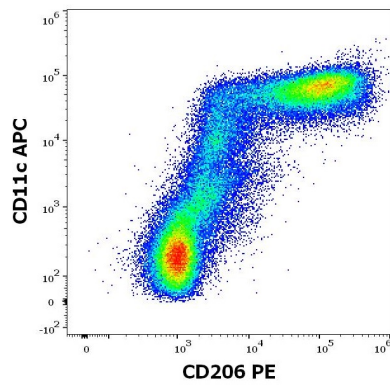
Database links	GeneID: 17533 Mouse GeneID: 4360 Human Swiss-port # P22897 Human Swiss-port # Q61830 Mouse
Gene Symbol	MRC1
Gene Full Name	mannose receptor, C type 1
Background	<p>The recognition of complex carbohydrate structures on glycoproteins is an important part of several biological processes, including cell-cell recognition, serum glycoprotein turnover, and neutralization of pathogens. CD206 / MMR is a type I membrane receptor that mediates the endocytosis of glycoproteins by macrophages. The protein has been shown to bind high-mannose structures on the surface of potentially pathogenic viruses, bacteria, and fungi so that they can be neutralized by phagocytic engulfment. [provided by RefSeq, Sep 2015]</p>
Function	<p>CD206 / MMR mediates the endocytosis of glycoproteins by macrophages. Binds both sulfated and non-sulfated polysaccharide chains.</p> <p>(Microbial infection) Acts as phagocytic receptor for bacteria, fungi and other pathogens.</p> <p>(Microbial infection) Acts as a receptor for Dengue virus envelope protein E.</p> <p>(Microbial infection) Interacts with Hepatitis B virus envelope protein. [UniProt]</p>
Highlight	<p>Related products: CD206 antibodies; CD206 ELISA Kits; CD206 Duos / Panels; Anti-Mouse IgG secondary antibodies; Related news: New antibody panels and duos for Tumor immune microenvironment Tumor-Infiltrating Lymphocytes (TILs) Anti-SerpinB9 therapy, a new strategy for cancer therapy RIP1 activation and pathogenesis of NASH</p>
Research Area	Immune System antibody; M1/M2/TAM Marker antibody; Macrophage Marker antibody; M2 Macrophage Marker antibody
Calculated Mw	166 kDa

Images



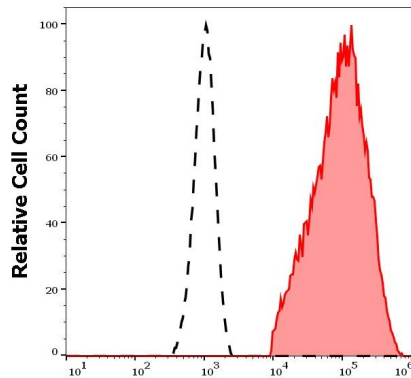
ARG55633 anti-CD206 / MMR antibody [15-2] (PE) FACS image

Flow Cytometry: Stimulated (GM-CSF + IL-4) human peripheral blood mononuclear cells stained with ARG55633 anti-CD206 / MMR antibody [15-2] (PE) (10 µl reagent / 10⁶ cells in 100 µl of cell suspension).



ARG55633 anti-CD206 / MMR antibody [15-2] (PE) FACS image

Flow Cytometry: Stimulated (GM-CSF + IL-4) human peripheral blood mononuclear cells stained with ARG55633 anti-CD206 / MMR antibody [15-2] (PE) (10 μ l reagent / 10^6 cells in 100 μ l of cell suspension) and [ARG53761](#) anti-CD11c antibody [BU15] (APC) (10 μ l reagent / 10^6 cells in 100 μ l of cell suspension).



ARG55633 anti-CD206 / MMR antibody [15-2] (PE) FACS image

Flow Cytometry: Separation of human CD206 positive CD11c positive dendritic cells differentiated upon monocyte stimulation (GM-CSF + IL-4) (red-filled) from non-stimulated lymphocytes (black-dashed). Human stimulated (GM-CSF + IL-4) peripheral blood mononuclear cells stained with ARG55633 anti-CD206 / MMR antibody [15-2] (PE) (10 μ l reagent / 100 μ l of peripheral whole blood).